



**Whitireia**  
NEW ZEALAND



**WelTec**

Delivering more for students

# 2019

## PROSPECTUS



# KIA ORA

I am delighted to welcome you to this joint prospectus for Whitireia and WelTec. Polytechnic training is the pathway to an enormous range of satisfying and rewarding careers; careers that underpin New Zealand's economy and strengthen our society.

Within this prospectus you will find information about the teaching, support services and programmes offered by Whitireia and WelTec in 2019. All our programmes have been developed with industry to provide you with the knowledge, practical skills and hands-on experience to prepare you for employment.

We have highly-skilled teaching and support staff who work hard to support you every step of the way. Our classes are small and we have a wide range of support services to ensure you achieve your career goals.

Thank you for considering the many training options available with us.

Ngā mihi nui ki a koutou

Chris Gosling  
**CHIEF EXECUTIVE  
WHITIREIA AND WELTEC**







## CAMPUS LIFE

Start your career	4
Whitireia and WelTec	6
Campuses	8
Student support	10
Māori and Pasifika support	12
Māori and Pasifika Trades Training	12
Key dates	13
Fees and scholarships	13



## GETTING READY

Entry requirements	15
Options for youth	16
Supported learning	18
English language	20
Te Reo Māori	21
Find a programme	22



## STUDY OPTIONS

Business Hospitality Tourism	25
Construction Engineering Information Technology	33
Creative	47
Health Social Services	57

# START YOUR CAREER



## PRACTICAL LEARNING

Gain valuable skills that you can put into practice straightaway. Every one of our programmes is designed with a job in mind.



## LEARN FROM INDUSTRY PROFESSIONALS

Our tutors are industry experts keen to share their knowledge. They're experienced nurses, chefs, have run businesses and worked as engineers.



## WORK ZONES

Learn in training facilities such as our beauty and hairdressing salons, restaurants and cafés, film studios, building sites, automotive workshops, music studios or health simulation suites.





## FLEXIBLE OPTIONS

Train at our campuses in Wellington, Petone, Porirua, or Auckland. You can study full-time, part-time or online in some of our programmes. We also offer a selection of night classes.



## CADETSHIPS AND INTERNSHIPS

There are opportunities to work while you study to gain experience, including trades cadetships, placements, work experience in restaurants or internships in the IT industry.



## QUALIFICATIONS THAT EMPLOYERS VALUE

Our qualifications are recognised in New Zealand and around the world.

All have been developed with our industry partners to ensure your training is practical and relevant.



---

STUDY AT

# WHITIREIA AND WELTEC







Whitireia and WelTec are two long-established and highly-successful polytechnics, widely respected by employers and with excellent student success rates.

# 9 OUT OF 10

GRADUATES ARE IN EMPLOYMENT  
AND/OR FURTHER STUDY



— OUR INSTITUTES WORK IN —  
**PARTNERSHIP**

to serve the interests of students,  
communities and industry.



# TOGETHER

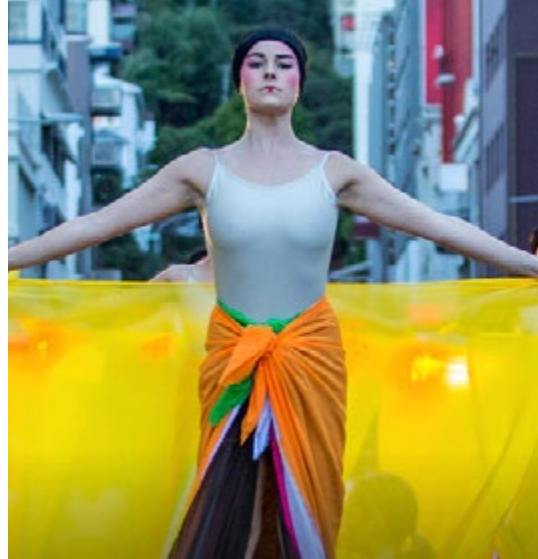
Whitireia and WelTec offer the best training opportunities and experience for students in the Wellington region and beyond.





“ ”

We head to the workshop most days. It's all about learning by doing.



# WELLINGTON CAMPUSES

Te Kāhui Auaha  
Wellington School of Hospitality



# PETONE CAMPUSES

Petone Campus  
Wellington Regional School of Construction







## PORIRUA CAMPUS



“ ”

It's such a friendly,  
welcoming place.



## AUCKLAND CAMPUS

# STUDENT SUPPORT

## CAREERS SUPPORT

We will give you advice on the right course for you and help guide you when seeking a job. Our careers advisors and job broker teams have close links with employers and information on available jobs. Your tutors can also often connect you with opportunities.

## CHILDCARE

We have fully-licensed childcare centres at our Petone and Porirua campuses. If you are interested enquire early; places are limited.

## COMPUTERS AND IT

Come in and use our computers, printers and photocopiers. Connect to free Wifi. We have help desk staff on campus too if you have any questions.

## COUNSELLING

We offer a confidential 24/7 counselling service to all students. You can have up to three free counselling sessions per year.

## FINANCIAL SUPPORT

Our financial advisors can help you get your money sorted. They will make sure you are supported with StudyLink, WINZ and any other funding required. We can also help with budgeting or gaining access to extra financial support such as emergency grants.

## HEALTH AND WELLNESS

We want you to be in good health so you can perform your best so we provide wellness activities and access to a range of health services.

## LIBRARY

Access a range of resources, both online and in print. Use books or journal articles for assignments. Consult building codes, standards and technical manuals.

## STUDENT VOICE

We want to hear your voice about your learning experience. Each programme elects a Student Voice Representative who is the communication channel between you, your class and the institute. You can put forward ideas about teaching and learning, events, activities or anything to do with your study experience. There are also student councils who welcome student participation.

## STUDENTS WITH A DISABILITY

We have dedicated, experienced people to support you if you have a disability or learning difficulty. We also offer medical and mental health support. We will work with your tutors and provide any special resources to ensure you succeed. Make a time to come and see the team before you start studying so we can ensure that all your supports are in place.



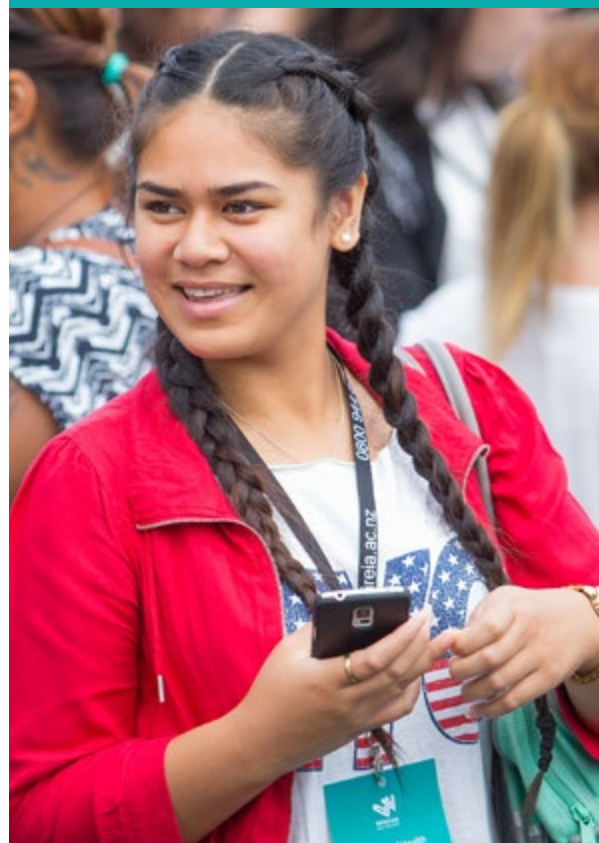
## STUDY SUPPORT

We are here to help you succeed in your study. Whether it's planning your study, report and essay writing, or maths and study skills. You can get in touch in person, on the phone or online.



## FREE BUS

There is a free bus service connecting Petone, Porirua and Wellington. Please see our websites for the timetable.







“ ”

My tutors help me so much. They're always there for me.



**222**  
**WILLIS**

## STUDENT ACCOMMODATION

Located in central Wellington this six-level accommodation building is designed for students from a variety of tertiary institutes.

[222willis.co.nz](http://222willis.co.nz)

# STUDENT SUPPORT

# MĀORI & PASIFIKA

## MĀORI STUDENT SUPPORT

Nau mai, haere mai.  
Our Māori support staff and mentors will support you on your learning journey.

We are here to support the success and participation of Māori students at WelTec and Whitireia.

At WelTec the Tamaiti Whangai mentors provide pastoral, cultural and academic support. Mentors will also provide advocacy internally and externally as required.

At Whitireia you'll be supported by our Pou Whakamanawa (Māori Success Advisor), who will respond to any issue you may have.

There are dedicated spaces to study, hang out and korero with mentors. At our Petone campus you'll find Te Whare Āwhina, and in Porirua there is Ako Ake Café for Māori and Pasifika students.

Iwi partners – Te Ātiawa at WelTec and Ngāti Toa at Whitireia – support our students and are regularly on campus.

## PASIFIKA STUDENT SUPPORT

Kia ora; Talofa lava; Malo e lelei;  
Kia orana; Talofa ni; Faka'alofa atu; Ni sa bula vinaka; Mauri; Talofa; Halo Olgeta; greetings and welcome.

We are committed to supporting you and your academic success.

Our Pasifika mentors and learning advisors provide academic, cultural and pastoral support. Whether you need learning support or help with an issue outside study, our friendly team is here for you.

We have dedicated spaces in Petone and Porirua. On our Petone campus is the Pasifika Centre and there's the Ako Ake Café for Māori and Pasifika students at our Porirua campus.

We also organise a range of cultural and sporting activities throughout the year.



## MĀORI AND PASIFIKA TRADES TRAINING

Government scholarships are available for Māori and Pasifika students looking to learn a trade. We'll also support you with mentoring, goal setting and preparing for work such as getting your driver's licence or with site safety and first aid certificates should you need them.

Our job broker teams have close links with employers and information on available jobs.

Options\* in Automotive, Beauty Therapy, Barbering Construction, Hairdressing, Hospitality, Mechanical Engineering and Transport.

\*See the website for the full 2019 list of programmes.

### LOOK OUT FOR THE

Māori and Pasifika Trades icon in the programme section



MĀORI AND PASIFIKA TRADES



# IMPORTANT DATES

**T1.**

Trimester One starts in early March (though some programmes begin earlier) and runs until the end of June.

**T2.**

Trimester Two runs from mid-July to mid-November.

**T3.**

Trimester Three runs from mid-November to March.



## STUDY FEES FREE

If you're new to tertiary study or have undertaken no more than half a year's tertiary education at Level 3 or above, you may qualify for one year of fees-free study.

See **feesfree.govt.nz** for more details.



## SCHOLARSHIPS

There are also scholarships to support you during your study, some offered by Whitireia and WelTec and others provided by employers and industry.

**[whitireia.ac.nz/scholarships](http://whitireia.ac.nz/scholarships)**  
**[weltec.ac.nz/scholarships](http://weltec.ac.nz/scholarships)**

## FEES

Go to **[whitireia.ac.nz](http://whitireia.ac.nz)** or **[weltec.ac.nz](http://weltec.ac.nz)** and check the programme sections for fee details.

If you are intending to pay by student loan, apply to StudyLink at **[studylink.govt.nz](http://studylink.govt.nz)**

# MORE FOR STUDENTS



## INDUSTRY-LEADING

studios, labs and  
technology

---



## AWARD-WINNING

industry-experienced  
teaching staff

---



## NEW OPTIONS

created in response  
to industry demand

---

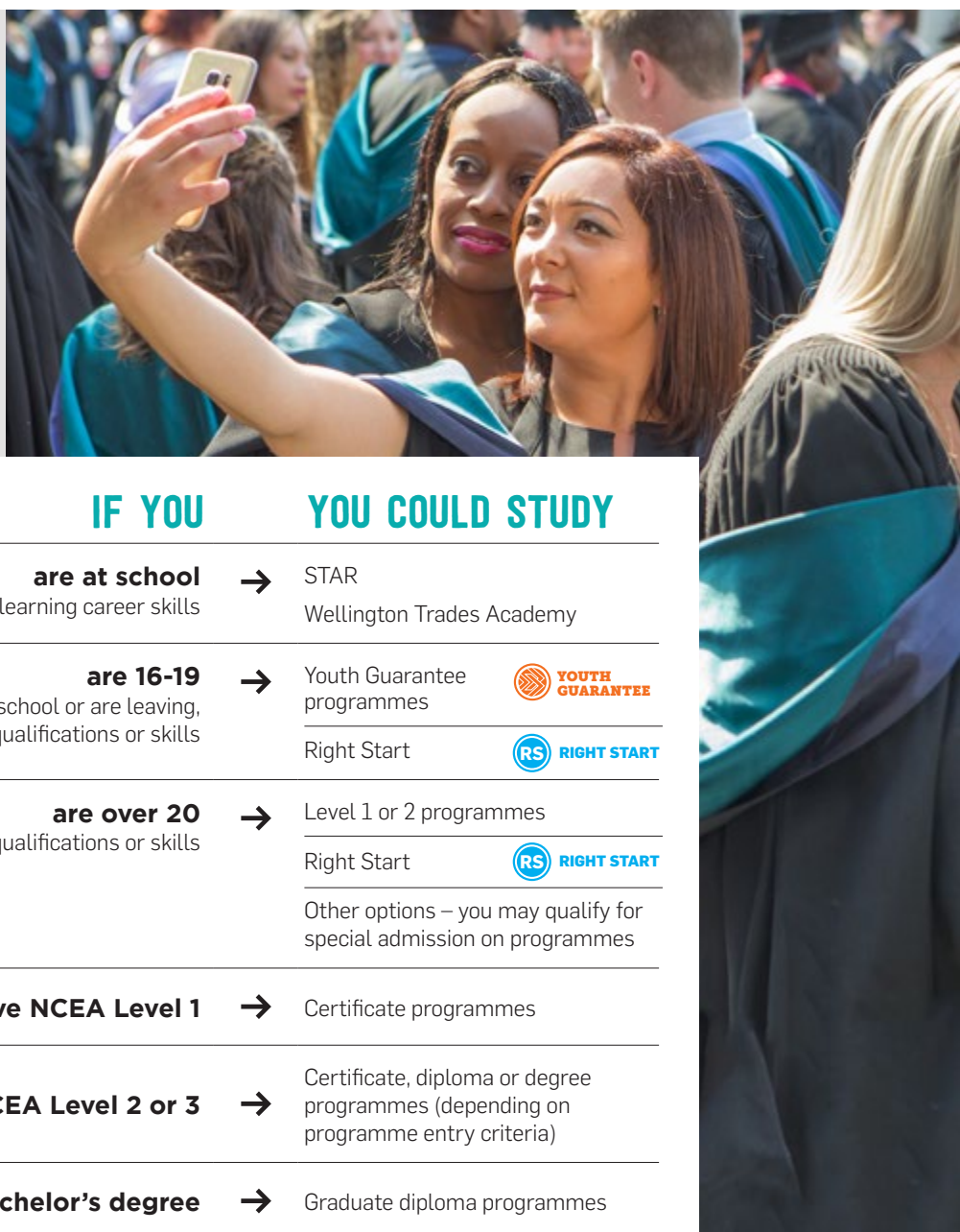




# ENTRY CRITERIA

We have programmes to suit different levels. Here's a general guide to entry criteria and what you might be able to study.

For specific entry criteria, check the programme information at **[whitireia.ac.nz](http://whitireia.ac.nz)** or **[weltec.ac.nz](http://weltec.ac.nz)** (whichever institute offers the programme).



IF YOU	YOU COULD STUDY
<b>are at school</b> and want to start learning career skills	→ STAR Wellington Trades Academy
<b>are 16-19</b> and have left school or are leaving, but don't have qualifications or skills	→ Youth Guarantee programmes  Right Start 
<b>are over 20</b> but don't have qualifications or skills	→ Level 1 or 2 programmes Right Start  Other options – you may qualify for special admission on programmes
<b>have NCEA Level 1</b>	→ Certificate programmes
<b>have NCEA Level 2 or 3</b>	→ Certificate, diploma or degree programmes (depending on programme entry criteria)
<b>have a bachelor's degree</b>	→ Graduate diploma programmes
<b>have a postgraduate diploma</b> in a relevant subject	→ Master's programmes

# OPTIONS FOR YOUTH

## STAR

Sample a range of career-based courses while still at school. Gain new skills and earn credits towards NCEA.

Completing a STAR course enables you to progress to more advanced options or gives you practical skills to find work.

To find out more about this option, talk to the careers advisor at your school or call us.

## WELLINGTON TRADES ACADEMY

Enjoy the benefits of staying at school while you learn new skills. Spend three days a week at school and two days at Trades Academy.

We partner with local secondary schools to provide year-long training programmes that allow you to achieve NCEA Level 2 and get ready for employment or higher-level training.

Study fees free with subsidised transport costs.

Options include:

- Animal Care
- Construction Trades
- Cookery
- Creative Technology
- Engineering and Automotive
- Hair and Beauty
- Health Science (one day a week)
- Hospitality
- Sport and Fitness







## YOUTH GUARANTEE

Are you 16-19 years old? Youth Guarantee enables you to train fees free for up to two years in a range of practical programmes.

Complete an introductory programme at Level 1 or 2 and then choose from a wider selection of Level 3 options. Youth Guarantee can help cover your fees, course-related costs and travel.

This could be ideal if you want to keep learning, but feel school is no longer right for you.

Options include\*:

- Automotive
- Construction Trades (Carpentry, Electrical, Painting and Decorating, Plumbing, Tiling)
- Cookery
- Hairdressing
- Hospitality
- Mechanical Engineering
- Tourism

\*See the website for the full 2019 list of programmes.



**LOOK OUT FOR THE**  
Youth Guarantee icon in  
the programme section



# SUPPORTED LEARNING

## ACHIEVING YOUR GOALS

We offer supported learning for students who have an intellectual or learning disability.

There is an emphasis on achieving students' goals for employment or progressing to further training.

Options available in Petone and Porirua.

### New Zealand Certificate in Skills for Living for Supported Learners

<b>Level</b>	1
<b>Duration</b>	1 year, full-time
<b>Location</b>	Petone, Porirua

WelTec

Gain skills to be independent, improve communication and plan for the future. Students will receive one-on-one support where required. Learn life skills with this programme that brings students together, yet focuses on individual development.







# ENGLISH LANGUAGE

## New Zealand Certificate in English Language

<b>Level</b>	2-5
<b>Duration</b>	17 weeks, full-time 1 year, part-time
<b>Location</b>	Porirua, Auckland
<b>WelTec</b>	<b>Whitireia</b>

Improve your English and develop language skills for study or work. These certificates prepare you to communicate and participate in social, academic and workplace environments. Four certificates for learners of English as an additional language.

## IMPROVE YOUR SKILLS

For speakers of other languages. Gain English skills for study or work.





# TE REO MĀORI PROGRAMMES



## TE REO MĀORI

Learn te reo Māori. Try the free, self-directed Te Hiringa o Te Reo, do an introductory certificate (full-time or through night classes) or further your knowledge on the full-time New Zealand Diploma in Te Reo.

## TE HIRINGA O TE REO

Whitireia

Learn te reo Māori at your own pace using CDs and an explanatory workbook in this beginner's programme. Start anytime from January onwards.



## New Zealand Certificate in Te Reo

<b>Level</b>	1-4
<b>Duration</b>	Level 1-2: 1 night class a week Level 3-4: 18 weeks full-time (part-time options)
<b>Location</b>	Porirua

Whitireia

Gain basic language skills to use te reo Māori in everyday situations. Ideal for beginners and if you want skills and knowledge to support your role in the public or private sector. With options at level 1 to level 4, you can progress to higher-level programmes to explore te reo further.

## New Zealand Diploma in Te Reo

<b>Level</b>	5
<b>Duration</b>	1 year, full-time
<b>Location</b>	Porirua

Whitireia

Extend your understanding and ability in te reo Māori me ngā tikanga to perform with confidence in formal and informal Māori cultural settings.

## START YOUR CAREER TODAY

Whether you are leaving school, upskilling or starting something completely new, we can help you achieve your career goals.



# FIND A PROGRAMME

Business	25
Hospitality	
Tourism	

Construction	33
Engineering	
Information Technology	

Creative	47
----------	----

Health	57
Social Services	

“ ”

What I'm learning  
is practical and relevant  
for my career.





NZQA Level
How long it goes for
Where you can study
Who offers the programme
Check the relevant website for detailed information

Look out for icons
--------------------

New Zealand Certificate  
in Construction Trade Skills  
(Carpentry)

Level	3
Duration	1 year, full-time
Location	Porirua, Petone
Whitireia	WelTec

There's high demand for carpenters. Gain core skills from setting out and levelling to framing and roofing. Learn in the workshop and on the building site where you'll construct a house that will become a family's home. Learn to apply safe work practices and build a solid CV for entering an industry apprenticeship.



FOR MORE  
INFORMATION

Contact us to find out about any of our programmes, in particular entry requirements, fees or start dates. You will find all this information on our websites too.

WHITIREIA

www.whitireia.ac.nz  
0800 944 847  
info@whitireia.ac.nz

WELTEC

www.weltec.ac.nz  
0800 935 832  
info@weltec.ac.nz





“ ”

I worked at The Fat Duck, which is Heston Blumenthal's restaurant.

MAXINE, COOKING AND  
PATISSERIE GRADUATE







# BUSINESS, HOSPITALITY AND TOURISM

Business	26
Business Administration	27
Hospitality	28
Food and Beverage Service	29
Hospitality Management	30
Tourism	31



## Business

### New Zealand Diploma in Business

<b>Level</b>	5
<b>Duration</b>	1 year, full-time (part-time options)
<b>Location</b>	Petone

WelTec

Learn key skills in business operations, management and business planning then focus on Accounting or Leadership and Management. Apply what you learn on real-world projects. Gain an understanding of how managers operate in New Zealand and overseas. Achieve a nationally-recognised qualification.

### Bachelor of Applied Management

<b>Level</b>	7
<b>Duration</b>	3 years, full-time (part-time options)
<b>Location</b>	Petone

WelTec

Develop problem-solving skills and work with real businesses. You'll spend half of your final year working on an industry project. Build core knowledge then specialise: Accounting, Event Management, Hospitality Management, Sales and Marketing, Strategic Management. You can also do a double major.

### Graduate Diploma in Applied Management

<b>Level</b>	7
<b>Duration</b>	1 year, full-time (part-time options)
<b>Location</b>	Petone, Porirua

WelTec

For those with a bachelor's degree or industry experience. Advance your knowledge of business practices. Gain insight into how managers operate and develop specialist skills. Specialisations are the same as for the Bachelor of Applied Management.

### Graduate Diploma in Applied Business Studies

<b>Level</b>	7
<b>Duration</b>	1 year, full-time (part-time options)
<b>Location</b>	Porirua

Whitireia

Gain specialist business skills in marketing and finance. Broaden your career options. Explore topics such as organisational leadership, change management and corporate finance. For those with a bachelor's degree or industry experience.

### Postgraduate Certificate in Management

<b>Level</b>	8
<b>Duration</b>	17 weeks, full-time (part-time options)
<b>Location</b>	Wellington

Whitireia

Gain advanced professional skills in business and deepen your knowledge of management. Specialise in finance or marketing. You can do additional study to achieve the Postgraduate Diploma in Management.

### Postgraduate Diploma in Management

<b>Level</b>	8
<b>Duration</b>	1 year, full-time (part-time options)
<b>Location</b>	Wellington

Whitireia

Advance and deepen your knowledge of management. Extend your professional and managerial skills. You can choose to specialise in finance or marketing.



# Business Administration

## New Zealand Certificate in Foundation Skills

<b>Level</b>	2
<b>Duration</b>	17 weeks, full-time
<b>Location</b>	Petone, Porirua
<b>Whitireia</b>	<b>WelTec</b>

Learn word processing, internet and email for the office. Gain an understanding of financial documents and the confidence to provide great customer service. Get prepared for entry-level office admin positions or progress to higher level programmes to boost your CV.

## New Zealand Certificate in Business (Administration and Technology) (Level 3)

<b>Level</b>	3
<b>Duration</b>	17 weeks, full-time
<b>Location</b>	Petone, Porirua
<b>Whitireia</b>	<b>WelTec</b>

Gain intermediate skills in writing, computing and communication. Learn to use Microsoft Office programs such as Word, Outlook, Excel and Access. Understand and produce financial documentation. Build skills in administration, reception and customer service, and how to work effectively in teams.

## New Zealand Certificate in Business (Administration and Technology) (Level 4)

<b>Level</b>	4
<b>Duration</b>	17 weeks, full-time
<b>Location</b>	Petone, Porirua
<b>Whitireia</b>	<b>WelTec</b>

Learn Microsoft Word, Excel and Access to an advanced level as well as accounting and payroll software such as MYOB and Ace Payroll. Build advanced skills in communication, report writing and minute-taking, and diary management. For those already working in an administration role, flexible distance study is available.

“

They said one of the great things about my interview was that I had the qualification. Also, my tutor gave me a rave review.”



**HAYLEY – Business Administration graduate**



“

I landed a job at the New Zealand Police in HR admin before I even finished the course.”



**KIM – Business Administration graduate**

# Hospitality

## New Zealand Certificate in Foundation Skills – Hospitality and Tourism

<b>Level</b>	2
<b>Duration</b>	17 weeks, full-time
<b>Location</b>	Porirua
Whitireia	

For Youth Guarantee students. Learn about tourism and its importance to New Zealand. Gain hands-on experience of how to run a café including baking and running café days. Develop skills in customer service. Prepare for entry-level positions in hospitality or tourism or progress to higher-level programmes.



## New Zealand Certificate in Hospitality (Level 2)

<b>Level</b>	2
<b>Duration</b>	12 weeks, full-time
<b>Location</b>	Petone, Porirua
Whitireia WelTec	

Start a career in hospitality. The Whitireia programme covers coffee making, food service and practical experience in our training café. The programme at WelTec covers cookery and food and beverage service; you'll learn basic techniques from experienced hospitality professionals.



## New Zealand Certificate in Baking (Level 3)

<b>Level</b>	3
<b>Duration</b>	17 weeks, full-time
<b>Location</b>	Petone, Porirua
Whitireia WelTec	

Whether you're passionate about sweet treats, bread baking or delicate pastries, you'll gain a solid foundation in baking skills. Our experienced dessert chefs will teach you to create and present beautiful bakery items. Work as a trainee baker or progress to further training.



## New Zealand Certificate in Baking (Level 4) (Generalist)

<b>Level</b>	4
<b>Duration</b>	1 year, full-time
<b>Location</b>	Wellington
WelTec	

Gain advanced baking and patisserie skills that are in hot demand. Produce breads, cakes, biscuits and patisserie items. Grow your capability to work as part of a commercial bakery team, in an artisan bakery or as a pastry chef.



## New Zealand Certificate in Cookery (Level 3)

<b>Level</b>	3
<b>Duration</b>	17 weeks, full-time
<b>Location</b>	Petone, Porirua
Whitireia WelTec	

Produce the basic dishes required in a commercial kitchen. Gain the skills to work at an entry-level in a commercial kitchen. Practise preparing, cooking and presenting dishes. Learn about nutrition, health and safety, and commercial kitchen procedures.



**City & Guilds**

Approved Centre

We incorporate City and Guilds qualifications, so your skills will be recognised around the world.



## Hospitality

### New Zealand Certificate in Cookery (Level 4)

<b>Level</b>	4
<b>Duration</b>	1 year, full-time
<b>Location</b>	Wellington, Porirua

WelTec

Train as a chef. Develop your cooking techniques and explore different cuisines. Learn about food preparation, food safety and nutrition. Plan and cost a menu. Practise your skills in our training restaurant, cooking for paying customers. Learn and benefit from tutors who have worked internationally.



### New Zealand Diploma in Cookery (Advanced)

<b>Level</b>	5
<b>Duration</b>	1 year, full-time
<b>Location</b>	Wellington

WelTec

Learn advanced cooking techniques, à la carte menu planning and costing, as well as kitchen management and supervisory skills. Gain hands-on experience with an industry work placement in a commercial kitchen.



“

It's been incredible to compete on the world stage while still a student.”



**ZANE – Cookery student and Young Chef Olympiad 2018**

## Food and Beverage Service

### New Zealand Certificate in Food and Beverage Service (Level 3) (Restaurant Services and Barista)

<b>Level</b>	3
<b>Duration</b>	17 weeks, full-time
<b>Location</b>	Wellington, Porirua

Whitireia

WelTec

Learn professional table service, barista skills, cash handling and front-of-house. Start to build your knowledge of menus and beverages. Wear a professional uniform and get experience working in our training restaurant and serving customers in our café.



### New Zealand Certificate in Food and Beverage Service (Level 4) (Restaurant Services)

<b>Level</b>	4
<b>Duration</b>	17 weeks, full-time
<b>Location</b>	Wellington

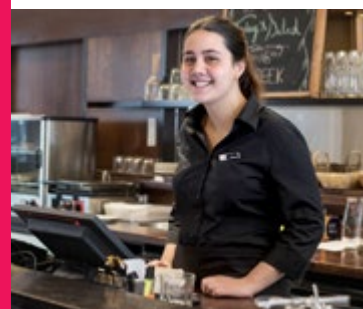
WelTec

Experience the rush of supervising waitstaff in our restaurant during a busy service. Enhance your knowledge of wine and beverages, master the art of coffee creation and learn about billing procedures. Apply your knowledge on a two-week work experience placement.



“

I want to do lots of travel and it's a really good qualification that's recognised overseas.”



**ROSE – Food and Beverage graduate**

# Hospitality Management

## New Zealand Diploma in Hospitality Management

<b>Level</b>	5
<b>Duration</b>	1 year, full-time
<b>Location</b>	Wellington

WelTec

Focus on the business and management aspects of the hospitality industry. Enhance your knowledge of food and beverage and accommodation management. Cover business operations, gain supervisory skills and work with a team to plan and execute an event.

## Bachelor of Applied Management – Hospitality management

<b>Level</b>	7
<b>Duration</b>	3 years, full-time (part-time options)
<b>Location</b>	Wellington, Petone

WelTec

Complete a business degree and major in hospitality management. Learn what it takes to be a successful manager and owner, from marketing and staff supervision to food costs and hotel operations. Learn food and beverage, accommodation and facilities management.

## Graduate Diploma in Applied Management – Hospitality Management

<b>Level</b>	7
<b>Duration</b>	1 year, full-time (part-time options)
<b>Location</b>	Wellington, Petone

WelTec

Designed for those with a bachelor's degree or industry experience, this one-year graduate diploma will advance your knowledge of business practices in hospitality. Learn to manage hotels, restaurants, tourist attractions and cruise ships. Gain skills you can apply in New Zealand or overseas.





# Tourism

## New Zealand Certificate in Tourism (Tourism and Travel)

<b>Level</b>	3
<b>Duration</b>	17 weeks, full-time
<b>Location</b>	Wellington

WelTec

Experience the tourism industry through a field trip to Rotorua and visits to many local visitor attractions. Discover the best entry role for you. Build customer service skills and knowledge of New Zealand's great destinations. Learn to use the reservations software Amadeus that is used in the industry.



## New Zealand Certificate in Tourism (Operations Endorsement)

<b>Level</b>	4
<b>Duration</b>	17 weeks, full-time
<b>Location</b>	Wellington

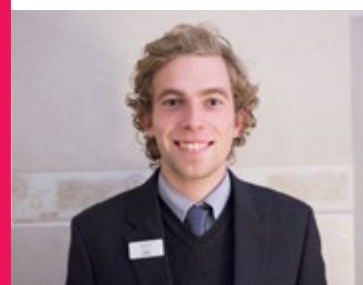
WelTec

Focus on the business side of tourism. Take part in a class field trip to Te Anau and Queenstown and learn about their tourism development. Visit local attractions. Increase your knowledge of business operations including accounting systems and gain skills in staff management.



“

My tutor told me about the role at Quest. I sent through my CV, got an interview and they said I could start straightaway.”



ISAAC – Tourism graduate

## New Zealand Diploma in Tourism and Travel (Level 5)

<b>Level</b>	5
<b>Duration</b>	1 year, full-time (part-time options)
<b>Location</b>	Wellington

WelTec

Learn about current business practice, event planning and team leadership. Travel to a regional destination to learn first-hand from local tourism providers. Study the industry, business systems and business development. Benefit from small classes. Learn from experienced tutors.



“

The course really helped me to learn not only about the local industry, but also the culture here”



HELEN – Tourism graduate



“ ”

Our tutor likes us to be hands-on. We do a whole lot of practical work.

JADE, PLUMBING





# CONSTRUCTION, ENGINEERING AND INFORMATION TECHNOLOGY

Construction	34
Construction Management	36
Quantity Surveying	36
Architectural Technology	36
Engineering Technology	37
Mechanical Engineering	39
Automotive	40
Transport	40
Information Technology	41
Wellington ICT Graduate School	44



## Construction

### Right Start – Construction

<b>Level</b>	2
<b>Duration</b>	17 weeks, full-time
<b>Location</b>	Petone, Porirua
<div>Whitireia</div> <div>WelTec</div>	

Gain NCEA Level 2. Sample a range of trades: carpentry, landscaping, painting, plumbing and electrical. Gain the skills to start work on a construction site and progress to higher-level programmes. Learn how to safely use and maintain tools, make building calculations and choose materials. Work on real projects.



### New Zealand Certificate in Construction Trade Skills (Carpentry)

<b>Level</b>	3
<b>Duration</b>	1 year, full-time
<b>Location</b>	Petone, Porirua
<div>Whitireia</div> <div>WelTec</div>	

There's high demand for carpenters. Gain core skills from setting out and levelling to framing and roofing. Learn in the workshop and on the building site where you'll construct a house that will become a family's home. Learn to apply safe work practices and build a solid CV for entering an industry apprenticeship.



### New Zealand Certificate in Carpentry

<b>Level</b>	4
<b>Duration</b>	Based on individual learning plan, part-time
<b>Location</b>	Petone (night classes)
<div>WelTec</div>	

Designed for those working as a carpentry apprentice. Progress towards becoming a qualified carpenter. You will learn through practical tutorials, evening classes, workshop instruction, plus regular on-site assessment at your work by our tutors. Learn alongside other apprentices.

### New Zealand Certificate in Electrical Engineering Theory

<b>Level</b>	3
<b>Duration</b>	1 year, full-time
<b>Location</b>	Petone, Porirua
<div>Whitireia</div> <div>WelTec</div>	

Designed to prepare you for an apprenticeship. Learn basic electrical theory and regulations. Build practical skills such as circuit wiring and how to use power instruments. Train in our workshops where you'll diagnose and fix electrical faults.



I've been building switchboards just over three months and the company's now given me an apprenticeship."



**BEN – Electrical Engineering graduate**



# Construction

“

I'm doing framing, doors, cladding, you name it. In my new job, I'm already on my seventh house.”



**MALACHI – Carpentry graduate**

## New Zealand Certificate in Construction Trade Skills (Painting and Decorating)

<b>Level</b>	3
<b>Duration</b>	17 weeks, full-time
<b>Location</b>	Petone

WelTec

Learn to professionally prepare surfaces and paint interiors and exteriors. Develop your decorating skills by learning wallpapering and spray painting. Gain safe worksite skills so you're ready to work in industry. Get the opportunity to practise your skills in the workshop and on real projects.



## New Zealand Certificate in Construction Trade Skills (Tiling)

<b>Level</b>	3
<b>Duration</b>	17 weeks, full-time
<b>Location</b>	Petone

WelTec

Develop skills to go straight into work in the industry. Learn about tiling techniques and design for indoor and outdoor installations. Use different materials like ceramics, stone, glass and terracotta. Train in our workshops. Gain safe worksite skills so you're ready for industry.

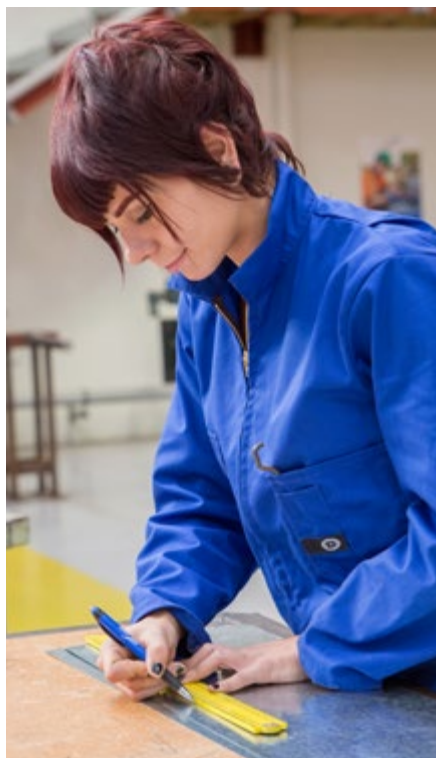


## New Zealand Certificate in Plumbing, Gasfitting and Drainlaying

<b>Level</b>	3
<b>Duration</b>	22 weeks, full-time
<b>Location</b>	Petone

WelTec

Designed to prepare you for an apprenticeship. Train in our workshops and drainlaying pit. Learn how to use and maintain tools. Develop skills in brazing, welding and soldering. You'll identify methods for weatherproofing and safely install plumbing systems, drains and gas pipes.



“

When I finish I might go into gasfitting because I quite like welding and working with metal.”



**JADE – Plumbing, Gasfitting and Drainlaying student**

## Construction Management

### New Zealand Certificate in Construction Related Trades (Supervisor)

<b>Level</b>	4
<b>Duration</b>	1 year, part-time
<b>Location</b>	Petone

WelTec

Work as a supervisor on construction projects. Gain knowledge of current building and construction practice for medium buildings. Supervise workers through effective communication, professionalism and planning. Work to required safety, technical, quality and productivity standards.

### New Zealand Diploma in Construction (Construction Management)

<b>Level</b>	6
<b>Duration</b>	2 years, full-time (part-time options)
<b>Location</b>	Petone

WelTec

Lead the team on a building site. Develop an understanding of construction planning and project management. Learn construction site procedures, quality assurance and site management. Coordinate people and resources to make sure projects are completed on time and to budget.

“

I've learned about crucial areas such as contracts.”



**SAM – Construction Management graduate**

## Quantity Surveying Architectural Technology

### New Zealand Diploma in Construction (Quantity Surveying)

<b>Level</b>	6
<b>Duration</b>	2 years, full-time (part-time options)
<b>Location</b>	Petone

WelTec

Gain skills that are in high demand. Learn about quantifying projects, estimating building costs and materials, and tendering and administering contracts. Many of our students get part-time work in the industry in their second year.

### New Zealand Diploma in Architectural Technology

<b>Level</b>	6
<b>Duration</b>	2 years, full-time (part-time options)
<b>Location</b>	Petone

WelTec

Start your career as an architectural designer or technician. Develop your technical drawing skills using computer-aided design (CAD) software. Understand architecture, building methods and materials, and building code requirements. Build a portfolio. Create architectural drawings and documentation for buildings across New Zealand.

“

I like coming up with really good design and seeing it come to life.”



**NICKY – Architectural Technology graduate**



# Engineering Technology

## Foundation Engineering

<b>Level</b>	3 and 4
<b>Duration</b>	17 weeks each, full-time
<b>Location</b>	Petone
<b>WelTec</b>	

For those wanting to pursue engineering, but needing to build foundation skills. Gain knowledge of mathematics, physics and engineering principles relevant to civil, mechanical or electrical engineering. Complete individually-tailored courses: mathematics, physics, algebra, calculus, study skills and a discipline-specific topic.

## New Zealand Diploma in Engineering

<b>Level</b>	6
<b>Duration</b>	2 years, full-time (part-time options)
<b>Location</b>	Petone
<b>WelTec</b>	

Become an engineering technician. Put engineering theory into practice and perform technical operations to professional standards. Specialise in civil, electrical or mechanical engineering. The diploma is accredited nationally and internationally.

## Bachelor of Engineering Technology

<b>Level</b>	7
<b>Duration</b>	3 years, full-time (part-time options)
<b>Location</b>	Petone
<b>WelTec</b>	

Get an engineering degree. Combine theory with a strong applied, practical component. Develop your problem-solving and critical thinking skills. Gain experience with an industry project in your third year. Specialise in Civil, Electrical or Mechanical Engineering. The degree is accredited nationally and internationally.

## Graduate Diploma in Engineering – Mechatronics

<b>Level</b>	7
<b>Duration</b>	1 year, full-time (part-time options)
<b>Location</b>	Petone
<b>WelTec</b>	

Work on an engineering project to solve a real industry problem. Learn to design and implement a mechatronic system and work with technologies such as robotics. Understand control and automation systems.



Lots of things I've learnt go straight into what I do at work."



**MICHAEL – Engineering Technology student**

# Engineering Technology

## Graduate Diploma in Engineering – Building Services

<b>Level</b>	7
<b>Duration</b>	1 year, full-time (part-time options)
<b>Location</b>	Petone

WelTec

Building services engineers are in high demand. Develop skills in HVAC (heating, ventilation and air conditioning) design, project management and operational management. Increase your knowledge of sustainability and energy efficiency. Visit construction sites and finished buildings to examine current practice. Complete an industry project.

## Graduate Diploma in Engineering – Structures

<b>Level</b>	7
<b>Duration</b>	1 year, full-time (part-time options)
<b>Location</b>	Petone

WelTec

Structural engineers are responsible for the design and build of a range of projects. Explore theories and conceptual design to design structures using timber, masonry, steel and concrete. You will build a strong understanding of New Zealand structural design codes. Work on an industry project.



We do theoretical and practical work as part of the programmes."



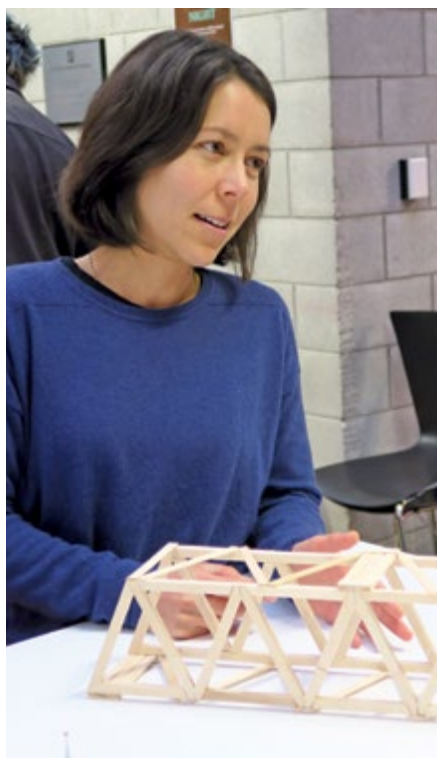
NAJIF – Engineering Technology tutor

## Graduate Diploma in Engineering – Water and Waste

<b>Level</b>	7
<b>Duration</b>	1 year, full-time (part-time options)
<b>Location</b>	Petone

WelTec

Focus on a development project to apply your learning. You will learn ways to improve and protect water quality, a global issue. Explore theories and conceptual design of systems in water treatment for drinking water, industrial wastewater and stormwater. Graduate work ready.



I'm interested in the changing uses of water and looking at water as a resource."



AMY – Engineering Technology student



# Mechanical Engineering

## Right Start – Mechanical and Automotive

<b>Level</b>	2
<b>Duration</b>	17 weeks, full-time
<b>Location</b>	Petone

WelTec

Gain NCEA Level 2. Develop beginner skills in automotive and mechanical engineering. Learn about engines, panel and paint, machining, metal work and welding. Train in our engineering and automotive workshops. Go on to further training to build your skills.



**YOUTH  
GUARANTEE**



**RIGHT START**



I liked the course because you try a little bit of everything from CAD to fabrication, machining to welding."



**RYAN – Mechanical Engineering student**

## New Zealand Certificate in Mechanical Engineering

<b>Level</b>	3
<b>Duration</b>	1 year, full-time
<b>Location</b>	Petone

WelTec

Gain skills to build, maintain and operate mechanical engineering equipment and plant. Learn maintenance fitting, welding, fitting and turning, sheet metal work and fabrication. Use the machinery that is used in the industry. Work on your own projects to develop your skills further.



**YOUTH  
GUARANTEE**



**MĀORI AND  
PASIFIKA TRADES**

## New Zealand Certificate in Allied Trades Skills (Welding)

<b>Level</b>	3
<b>Duration</b>	17 weeks, full-time
<b>Location</b>	Petone

WelTec

Develop your welding skills and gain industry-recognised welding standards. The demand for structural welding skills is growing, which could lead to better paid jobs. Most of your time will be spent in workshops and engaged in practical projects.

## New Zealand Certificate in Engineering Fabrication (Managed Apprenticeship)

<b>Level</b>	4
<b>Duration</b>	3-4 years, part-time (night classes, block courses)
<b>Location</b>	Petone

WelTec

For apprentices in mechanical workshops or those who have completed the New Zealand Certificate in Mechanical Engineering (Level 3). You'll attend night classes and block courses. Use welding and fabrication skills to make, install and repair metal products. Specialise in welding and fabrication.

## Automotive

### Right Start – Mechanical and Automotive

<b>Level</b>	2
<b>Duration</b>	17 weeks, full-time
<b>Location</b>	Petone

WelTec

Gain NCEA Level 2. Develop beginner skills in automotive and mechanical engineering. Learn about engines, panel and paint, machining, metal work and welding. Train in our engineering and automotive workshops. Go on to further training to build your skills.



### New Zealand Certificate in Collision Repair and Automotive Refinishing

<b>Level</b>	3
<b>Duration</b>	1 year, full-time
<b>Location</b>	Petone

WelTec

Gain foundation spray-painting and collision repair skills, ready to build skills in your specialisation. Learn in our professionally fitted workshops. Our industry partners have helped us develop the perfect facilities for panel and refinishing training.



I really wanted to work with cars and technology. I enjoy the more technical side of things."



AARON – Automotive Technology graduate

### New Zealand Certificate in Automotive Engineering

<b>Level</b>	3
<b>Duration</b>	1 year, full-time
<b>Location</b>	Petone, Porirua

Whitireia

WelTec

Develop foundation skills in engine repair and performance, servicing, electrics as well as basic engineering tasks and welding. Work on light and diesel vehicles. Apply your skills with work experience. Progress to the New Zealand Certificate in Automotive Engineering (Managed Apprenticeship).



### New Zealand Certificate in Light Automotive Engineering (Managed Apprenticeship)

<b>Level</b>	4
<b>Duration</b>	3-4 years, part-time (night classes, block courses)
<b>Location</b>	Petone

WelTec

Complete your light automotive engineering apprenticeship through WelTec. Enjoy access to expert advice and practical tutorials from our tutors while you work. You'll do block courses and study part-time in the evenings with other apprentices. Specialise in light automotive engineering.

### New Zealand Certificate in Commercial Road Transport (Heavy Vehicle Operator)

<b>Level</b>	3
<b>Duration</b>	26 weeks, full-time
<b>Location</b>	Porirua

Whitireia

Learn to drive Class 2 and 4 trucks, operate forklifts and gain the necessary licences and endorsements such as for dangerous goods. Do practical driving tests. Practise loading and unloading. If you already hold a Class 2 licence, there's the additional opportunity to obtain a Class 5 licence.



## Transport



## Information Technology

### New Zealand Certificate in Computing (User Fundamentals)

<b>Level</b>	2
<b>Duration</b>	12 weeks, full-time
<b>Location</b>	Porirua

Whitireia

Get an introduction to information technology. You will learn about hardware and operating systems, programming, creating websites and working with Android apps, including writing programs. You can go on to study the New Zealand Certificate in Information Technology.

### New Zealand Certificate in Information Technology Essentials

<b>Level</b>	4
<b>Duration</b>	17 weeks, full-time
<b>Location</b>	Petone

WelTec

Introductory 17-week programme. Learn basic PC maintenance such as how to install, configure and maintain office network computers. Build knowledge of computer hardware and operating systems. Develop your understanding of the internet and foundation knowledge of automated office applications.



The course was quite short, covered all the basics and gave me the chance to see if I'd like it."



**TASHA** – Information Technology student

## Free introductory computing courses

### Computing Made Easy

Learn computing essentials for free at WelTec. The course provides an easy introduction to email, the internet and popular software programs.

- Learn at your own pace
- Classes run at different times
- Open entry to all skill levels
- Flexible start dates



[weltec.ac.nz/cme](https://weltec.ac.nz/cme)



# Information Technology

## New Zealand Diploma in Information Technology (Technical Support)

<b>Level</b>	5
<b>Duration</b>	1 year, full-time (part-time options)
<b>Location</b>	Petone

WelTec

Get the skills to work on a help desk, in computer servicing and technical support. Learn how to deliver great customer service. Understand PC essentials by taking a computer completely apart and putting it back together. Work on hard drive recovery, basic software development, game design and databases.

## New Zealand Certificate in Information Technology

<b>Level</b>	5
<b>Duration</b>	17 weeks, full-time (part-time options)
<b>Location</b>	Porirua

Whitireia

Build your skills to create programs, websites, animated graphics, computers and small networks. Study programming, digital media, internet communications and hardware fundamentals. Progress to the Diploma in Information Systems (Level 5) or the Bachelor of Information Technology.



I did one trimester of computer science at university before I came here for a more hands-on experience."



ABI – Information Technology student

## New Zealand Diploma in Information Systems

<b>Level</b>	5
<b>Duration</b>	1 year, full-time (part-time options)
<b>Location</b>	Porirua

Whitireia

Develop your skills in creating programs, web pages, networks and databases. Learn the fundamentals of software design and development. Build knowledge of the IT industry. Around 60 percent of the programme is practical – you'll learn by working on real problems.

## Bachelor of Information Technology

<b>Level</b>	7
<b>Duration</b>	3 years, full-time (part-time options)
<b>Location</b>	Petone, Porirua

Whitireia

WelTec

Join the booming IT industry. Our students learn by building real software, apps and products. Develop your problem-solving skills. Work on an industry project in your final year. Specialise in an area of your choice: applied data science, cyber security, interaction design, networking and infrastructure or software development.

## Graduate Diploma in Information Technology

<b>Level</b>	7
<b>Duration</b>	1 year, full-time (part-time options)
<b>Location</b>	Petone, Porirua

Whitireia

WelTec

Apply a range of techniques and technology to solve a workplace or industry problem. Develop your knowledge with a selection of courses. Options in software and app development, systems design, testing, security, databases, networking, programming and information assurance. Gain recognition for your skills.



## Information Technology

### Graduate Diploma in Information Assurance and Security

<b>Level</b>	7
<b>Duration</b>	1 year, full-time (part-time options)
<b>Location</b>	Petone
<div> <div>Whitireia</div> <div>WelTec</div> </div>	

Gain a comprehensive understanding of information security and maintenance. Learn how to integrate security policy, practices and technologies into operational structures. Design secure systems and assess cyber threats. Explore the principles of survivability and information assurance.

### Postgraduate Certificate in Information Technology

<b>Level</b>	8
<b>Duration</b>	17 weeks, full-time
<b>Location</b>	Wellington
<div> <div>Whitireia</div> <div>WelTec</div> </div>	

Update and enhance your skills in a specialist area of information technology. Work on an in-depth project in your field. Choose from a range of options. You'll also investigate the impact of IT on society and consider different perspectives.



What I learnt in applications security and vulnerability management is very relevant to what I do in my job."



**DINESH** – Information Technology graduate

### Postgraduate Diploma in Information Technology

<b>Level</b>	8
<b>Duration</b>	1 year, full-time
<b>Location</b>	Wellington
<div> <div>Whitireia</div> <div>WelTec</div> </div>	

Research the latest developments in an area of interest to you. Update and extend your knowledge through in-depth study of the latest technology in your area of speciality. Enhance your project management skills. Engage in intellectual analysis, critique and problem-solving.



I love teaching students new skills they can apply in the workforce."



**CHALINOR** – Information Technology tutor



There is high demand for ICT graduates in the Wellington region and our programmes are designed to supply industry-ready talent.

The Wellington ICT Graduate School opened in 2016 and is a partnership between Victoria University of Wellington, Whitireia and WelTec. It offers a range of Master's programmes developed in partnership with industry:

- Master of Information Technology
- Master of Design Technology
- Master of Professional Business Analysis
- Master of Software Development
- Master of User Experience Design
- Master of Engineering Practice

You'll study alongside industry professionals on work-relevant, business-focused skills that will give you the specialised knowledge you need to succeed in the booming technology industry.

Students will work on real projects for start-ups, banks, consulting firms, film companies, multi-national corporations, SMEs and some of the fastest-growing tech companies in New Zealand. Students will also develop entrepreneurial, leadership, and business networking and interview skills.

You can enrol through either Whitireia or WelTec.

### Postgraduate Certificate in ICT

<b>Level</b>	8
<b>Duration</b>	17 weeks, full-time
<b>Location</b>	Wellington



Boost your career at the Wellington ICT Graduate School. This 17-week programme has been designed to meet needs identified by local industry. It's an applied research programme where you will gain an introduction to research in ICT, plan and conduct your own projects and do a work placement.



### Postgraduate Diploma in ICT

<b>Level</b>	8
<b>Duration</b>	1 year, full-time
<b>Location</b>	Wellington



Gain an edge for your career at the Wellington ICT Graduate School. Develop advanced knowledge in specialist areas from data mining to mobile devices, cloud computing to cryptography. Research the latest developments in an area of interest to you. Work effectively in teams and enhance your project management skills.



### Master of Information Technology

<b>Level</b>	9
<b>Duration</b>	18 months, full-time (part-time options)
<b>Location</b>	Wellington



Choose hands-on research relevant to your career from a range of options including data mining, cloud computing, business analysis, business intelligence, ICT infrastructure, information management, mobile devices, network design and management, security and forensics, quality assurance, and systems architecture.



I'm regularly exploring different teaching strategies to keep things fresh and get the best out of my students."



**REZA – Information Technology tutor**



# ANZ'S

## TOP FEMALE IT STUDENT

### **Roxy achieves success with banking and technology giant – ANZ**

Roxy started her IT journey at WelTec with the Level 4 Certificate in IT. Now she's undertaking her Master's degree whilst completing an IT internship at ANZ.

The greatest skill Roxy has gained at WelTec is her ability to interact with people at a technical level. As a teaching assistant, she plans to share her knowledge with the next generation of female IT learners.



“ ”

**I'm working in risk and security, then switching to ANZ's applications support team.**

**ROXY, ANZ WINNER**



### **ANZ'S IT AWARD**

The top female student award is part of the combined efforts of WelTec and ANZ to address the shortage of females in the IT industry.



“ ”

My tutors referred me  
to jobs which meant  
I had work experience  
before I graduated.

KUMI, DIGITAL MEDIA



**A** TE AUHAHA  
NZ Institute  
of Creativity





# CREATIVE

Performing Arts	48
Music	49
Film	50
Creative Writing	50
Publishing	51
Radio Broadcasting	51
Visual Arts and Digital Media	52
Photography	53
Ngā Toi   Māori Art	53
Hairdressing and Barbering	54
Makeup Artistry and Beauty Therapy	55



# Performing Arts

## New Zealand Diploma in Performing Arts – Māori and Pacific Dance

<b>Level</b>	6
<b>Duration</b>	2 years, full-time
<b>Location</b>	Wellington

Whitireia

Learn Māori, Samoa, Cook Islands and New Zealand contemporary dance. Through this fusion develop the future of dance in Aotearoa. Build strengths in technique, performance and choreography. Students have worked with internationally-acclaimed dance company Black Grace and performed in a range of productions.

## New Zealand Diploma in Dance – Commercial Dance

<b>Level</b>	6
<b>Duration</b>	2 years, full-time
<b>Location</b>	Wellington

Whitireia

Get prepared for the commercial dance sector. Develop your skills in jazz, ballet, tap, hip hop, and lyrical dance. Train in our studios and perform in productions. Learn to market yourself, make a show reel and develop industry-standard audition techniques.

## New Zealand Diploma in Drama

<b>Level</b>	6
<b>Duration</b>	2 years, full-time
<b>Location</b>	Wellington

Whitireia

Learn everything from stagecraft and improvisation to mime and stage combat. You'll have the opportunity to perform at professional theatres and in Te Auaha productions. Work with our film students. Audition for well-known theatre directors. Our tutors include actors Carmel McGlone, Ricky Dey and Tess Jamieson-Karaha.

## New Zealand Diploma in Performing Arts – Musical Theatre

<b>Level</b>	6
<b>Duration</b>	2 years, full-time
<b>Location</b>	Wellington

Whitireia

Sing, act, dance. Be a 'triple threat' as a versatile performer. Every year you'll perform in a major show such as our recent productions of *The Addams Family* and *Little Shop of Horrors*. Work with musical directors and choreographers who are in demand.

## Bachelor of Creativity (Performing Arts)

<b>Level</b>	7
<b>Duration</b>	3 years, full-time
<b>Location</b>	Wellington

Whitireia

You can either go straight into the 3-year degree and focus on Māori, Samoan, Cook Island and New Zealand contemporary dance, or enter into the 3rd year after completing one of the 2-year diplomas on this page (Māori and Pacific Dance, Commercial Dance, Drama or Musical Theatre).

## Gain a degree

If you've completed a two-year Performing Arts diploma, you can gain the Bachelor of Creativity (Performing Arts) degree with a further one year's study. You'll develop a body of work in your specialisation. Learn more about creative collaboration and building a career in the creative industries.

Specialise in Māori and Pacific Dance, Commercial Dance, Drama or Musical Theatre.

# Music

“

We worked with music legend Annie Crummer on the show she was directing here at Te Auaha.”



**PETESA – Māori and Pacific Dance student**

## New Zealand Certificate in Performing Arts – Foundation Music

<b>Level</b>	3
<b>Duration</b>	17 weeks, full-time
<b>Location</b>	Wellington

Whitireia

Designed to prepare students for further study in music or DJ music. Focus on performance skills, playing in a band, professional studies and music theory. Make music in a warm, supportive and industry-focused environment. Build foundation skills in music.

## New Zealand Certificate in Music

<b>Level</b>	4
<b>Duration</b>	1 year, full-time
<b>Location</b>	Wellington

Whitireia

Develop your musical skills and understanding of the industry. You'll cover theory, composition, music production, instrument and professional studies, as well as performing in a band. Learn from musicians including bass player Johnny Lawrence, session and solo vocalist Lisa Tomlins and drummer Rick Cranson.

## New Zealand Certificate in DJ and Electronic Music Production

<b>Level</b>	4
<b>Duration</b>	1 year, full-time
<b>Location</b>	Wellington

Whitireia

Boost your skills training under DJ Raw, Alphabethead, DJ Spell and DJ Shan. Plus you'll learn from industry speakers who are club owners, performers and world-class DJs. Focus on DJ performance, turntable skills, the art of mixing, the history of DJing, music production and industry studies.

## Bachelor of Creativity (Music)

<b>Level</b>	7
<b>Duration</b>	3 years, full-time
<b>Location</b>	Wellington

Whitireia

Develop your instrument and musicianship skills to a high level through studying arranging, improvisation and recording/production skills. Work together on composing songs, releasing albums or putting on a show. Perform at Te Auaha and play gigs at music venues around Wellington.

“

You'll be surrounded by musicians in a warm, whānau environment.”



**LISA – Music tutor**

# Film

## New Zealand Diploma in Screen Production

<b>Level</b>	5
<b>Duration</b>	1 year, full-time
<b>Location</b>	Wellington
Whitireia	

Train at the New Zealand Film and Television School, the industry-recognised place of study. All our tutors come from the industry. Use our ARRI ALEXA camera and the editing tools you'll find in industry. Learn every aspect of filmmaking then specialise in the area you're passionate about.



“

The first role I got was from one of the industry tutors I met on the course.”



NICOLA – Film graduate

# Creative Writing

## New Zealand Diploma in Writing for Creative Industries

<b>Level</b>	5
<b>Duration</b>	1 year, full-time (part-time options)
<b>Location</b>	Online or Wellington
Whitireia	

Learn the craft of writing through exercises, workshops, course reading, regular feedback, but most of all through writing itself. Develop skills in genres including short fiction, non-fiction, scriptwriting and poetry. Study on campus or online.

## New Zealand Diploma in Creative Writing

<b>Level</b>	6
<b>Duration</b>	1 year, full-time
<b>Location</b>	Wellington
Whitireia	

Undertake specialised study and practice in the craft of writing a novel, screenplay, short fiction, poetry or non-fiction work. Focus on your genre and create a first draft manuscript. You will work in a workshop environment with tutors and mentoring support.

## Bachelor of Creativity (Writing)

<b>Level</b>	7
<b>Duration</b>	3 years, full-time
<b>Location</b>	Wellington
Whitireia	

Learn the skills to tell your stories. Develop your craft for novels, short stories, poems or film scripts. In year one, try everything; in year three, create a publishable manuscript in your specialisation. It's a warm, close-knit community and you'll learn from experienced writers as well as each other.



## Publishing

### Graduate Diploma in Creative Writing

<b>Level</b>	7
<b>Duration</b>	1 year, full-time
<b>Location</b>	Wellington

Whitireia

Designed for experienced writers, you will work towards developing a manuscript – fiction, poetry, script or non-fiction – to a standard appropriate for submission to a publisher. Build your skills through individual mentoring from experienced writers and workshoping with fellow students.

### Graduate Diploma in Publishing (Applied)

<b>Level</b>	7
<b>Duration</b>	1 year, full-time
<b>Location</b>	Wellington

Whitireia

Learn the publishing process by working on real books with real publishing clients. Work as a publishing team as you gain skills in editing, project management, typesetting and publicity for print and digital media. Benefit from regular industry speakers and complete two work placements in publishing companies.

### Graduate Certificate in Editing

<b>Level</b>	7
<b>Duration</b>	32 weeks, part-time
<b>Location</b>	Online

Whitireia

Gain a solid base of editorial techniques covering a wide range of topics, including plain English, grammar and usage, web editing, legal concerns and Māori-language considerations. Learn to evaluate content, shape text for different purposes, and work with writers and stakeholders. Study online.

## Radio Broadcasting

### New Zealand Diploma in Radio Broadcasting

<b>Level</b>	5
<b>Duration</b>	1 year, full-time
<b>Location</b>	Wellington, Auckland

Whitireia

Channel your creativity towards a career you'll love, whether it's writing a radio ad, dreaming up a fun radio contest or producing news stories. Learn on-air presentation, sales and marketing, brand engagement, audio production, podcasting, journalism and more. Benefit from tutors who work in the industry.



“

You've got to find ways to be creative every single day.”



**JONO – Radio Broadcasting tutor**

# Visual Arts and Digital Media

## New Zealand Certificate in Digital Media and Design

<b>Level</b>	3
<b>Duration</b>	17 weeks, full-time
<b>Location</b>	Wellington

WelTec

Gain introductory skills. Discover creative techniques in digital media and design. Learn 3D media, design, drawing, illustration and photography. Prepare for higher-level study in Creative Technologies and Digital Media.

## New Zealand Certificate in Creativity

<b>Level</b>	4
<b>Duration</b>	17 weeks, full-time
<b>Location</b>	Wellington

WelTec

Start your creative journey. Get a taste of a wide range of creative disciplines. You'll learn about art and design, illustration, digital media and photography. Develop skills in digital modelling and 3D printing. Start to build a professional portfolio.

## New Zealand Diploma in Creativity (Level 5)

<b>Level</b>	5
<b>Duration</b>	1 year, full-time
<b>Location</b>	Wellington

Whitireia

WelTec

From day one you'll use digital design software, 3D printers, laser cutters, cameras and more. Work with a mix of media such as motion graphics and virtual reality, or apply digital techniques to create physical works. Develop your creative thinking skills.

## Bachelor of Creativity (Digital Media) [Creative Technologies]

<b>Level</b>	7
<b>Duration</b>	3 years, full-time
<b>Location</b>	Wellington

WelTec

Use current and emerging creative technologies in a variety of ways. Work with virtual reality, animation, gaming and motion graphics. Create physical works with 3D printers, laser cutters or traditional methods. You'll learn from tutors who have worked at Weta Workshop or exhibited their work overseas.

## Bachelor of Creativity (Digital Media) [Visual Communication Design]

<b>Level</b>	7
<b>Duration</b>	3 years, full-time
<b>Location</b>	Wellington

Whitireia

Focus on Visual Communication Design. Develop skills in design fundamentals, typography and graphics for publication, branding, motion graphics and web design. Your tutors have been in design consultancies and still work in the industry. Our graduates have worked in agencies, as illustrators and artists.

## Bachelor of Creativity (Visual Arts)

<b>Level</b>	7
<b>Duration</b>	3 years, full-time
<b>Location</b>	Wellington

Whitireia

Focus on your discipline: jewellery, painting, print making, sculpture or photography. Create a body of work in your final year. Gain skills in developing your portfolio, exhibiting and building a creative career. Alongside studio work, you will explore the theory and history of art creation.

## Photography

“

I started Embrace Design® to make my own products, and to help people complete their projects.”



**HENRI – Creative Technologies graduate**

### New Zealand Diploma in Photography

<b>Level</b>	5
<b>Duration</b>	1 year, full-time (part-time options)
<b>Location</b>	Wellington

Whitireia

Learn traditional forms of photography as well as modern digital photography. Gain a good understanding of the techniques of image production in a range of genres, and develop your creativity. Build your portfolio. There's an emphasis on how photography is used in the creative arts.

“

I want to be a wildlife photographer taking photos of whales and dolphins.”



**SHANNON – Photography student**

## Ngā Toi | Māori Art

### New Zealand Diploma in Ngā Toi

<b>Level</b>	5
<b>Duration</b>	1 year, full-time (flexible options)
<b>Location</b>	Porirua

Whitireia

Explore the Māori art forms of raranga (weaving) or whakairo (carving). Build a solid foundation in these customary practices or develop your skills further – the programme is tailored to suit you. Your learning will be underpinned by te reo, tikanga and mātauranga toi.

### Bachelor of Creativity (Toi Poutama)\*

<b>Level</b>	7
<b>Duration</b>	3 years, full-time
<b>Location</b>	Porirua

Whitireia

Explore Māori art forms at degree level. Create a major body of work in your final year. Gain complementary skills in business, curatorship, exhibition practices and taonga management. If you have completed the diploma, you can go straight to the second year of this degree.

\*Subject to NZQA approval

“

I'm the grandchild of a weaver. When I decided to follow this path, I knew I was home.”



**EMMA – Ngā Toi graduate**



# Hairdressing and Barbering

## Right Start – Service Industries

<b>Level</b>	2
<b>Duration</b>	17 weeks, full-time
<b>Location</b>	Petone
<b>WelTec</b>	

Gain NCEA Level 2. Start your career in the service industry. Sample hairdressing, beauty therapy and retail then choose which you like best. There's lots of further options. Your training will be practical and hands-on, and you'll learn in our salon.



## New Zealand Certificate in Barber Skills

<b>Level</b>	3
<b>Duration</b>	1 year, full-time
<b>Location</b>	Wellington
<b>WelTec</b>	

Learn haircuts, clipper work, cutting and shaving, sales and the crucial social skills needed in barbering. Benefit from industry masterclasses each week. Train in our barbershops open to the public and begin building your clientele – you'll have done hundreds of haircuts by the time you've finished.



## New Zealand Certificate in Hairdressing (Salon Support)

<b>Level</b>	3
<b>Duration</b>	1 year, full-time
<b>Location</b>	Wellington, Petone, Porirua
<b>Whitireia WelTec</b>	

Learn essential skills such as reception duties, shampooing, applying treatments or colours under supervision, and styling. You'll also be introduced to cutting. Develop experience working as a team member in our salon. You'll learn alongside other hairdressing students and have fun along the way.



## New Zealand Certificate in Hairdressing (Emerging Stylist)

<b>Level</b>	4
<b>Duration</b>	1 year, full-time
<b>Location</b>	Wellington
<b>WelTec</b>	

Develop more advanced skills in cutting, styling and colouring. Begin to grow your own clientele working in our salons. Get the opportunity to be part of the World of WearableArt™ Awards show, hairdressing competitions, a regional photographic competition, fashion shows and theatre productions.



“

Working on the World of WearableArt™ was an amazing opportunity.”



**SKYE – Hairdressing student**

# Makeup Artistry and Beauty Therapy

## New Zealand Certificate in Makeup and Skin Care (Introduction)

<b>Level</b>	3
<b>Duration</b>	17 weeks, full-time
<b>Location</b>	Wellington, Porirua

Whitireia

WelTec

Gain an introduction to basic beauty services, communication, professionalism and sales strategies. Learn practical skills from skincare and maintenance through to classic and trending makeup looks.

YOUTH  
GUARANTEEMĀORI AND  
PASIFIKA TRADES

## New Zealand Certificate in Makeup Artistry

<b>Level</b>	4
<b>Duration</b>	1 year, full-time
<b>Location</b>	Wellington

WelTec

Learn corrective techniques, fashion makeup and hairstyling for runway, editorial and private clients. Study special effects, including character design, facial manipulation, ageing, wig styling, trauma effects and body art. Gain valuable business and creative collaboration skills. Develop your skills during events like the World of WearableArt™.

## New Zealand Certificate in Beauty Therapy

<b>Level</b>	4
<b>Duration</b>	1 year, full-time
<b>Location</b>	Petone, Porirua

WelTec

Gain skills in facial therapy, hair removal, manicure and pedicure, makeup, spray tanning, eyebrow shaping and eyelash tinting. Learn essential anatomy and physiology. Develop retail and reception skills in our salon and work with clients. You can also sit the internationally-recognised City & Guilds diploma.



CITY &amp; GUILDS

## New Zealand Diploma in Beauty Therapy

<b>Level</b>	5
<b>Duration</b>	1 year, full-time
<b>Location</b>	Wellington

WelTec

Focus on body treatments including massage, specialised wraps and permanent hair removal. Help clients reveal healthier-looking skin with microdermabrasion. Perfect your skills by working with clients in our salon and spa. Benefit from small classes. Gain CIDESCO, an internationally-recognised diploma.

## New Zealand Certificate in Spa Therapy

<b>Level</b>	5
<b>Duration</b>	1 year, full-time
<b>Location</b>	Wellington

WelTec

There's great growth in spa therapy. Train in hydrotherapy and treatments such as hot stones therapy, reflexology, Indian head massage and lymphatic drainage massage. Put your skills into practice in our salon. Understand client needs, including related areas such as nutrition and exercise.



Many people working in beauty therapy have come out of this programme."



**NATASHA – Beauty Therapy graduate**



“ ”

It's great to be able to  
gain work experience in  
a variety of clinics.

SHAYNA, VETERINARY  
NURSING STUDENT





# HEALTH AND SOCIAL SERVICES

Nursing	58
Postgraduate Nursing, Health and Social Practice	59
Paramedic	61
Health Assistance	61
Health Psychology	61
Exercise Science	62
Veterinary Nursing and Animal Care	62
Foundation	63
Early Childhood Education	63
Funeral Services	64
Counselling and Addiction Studies	64
Social and Community Work	65
Youth Development	65



# Nursing

## New Zealand Diploma in Enrolled Nursing

<b>Level</b>	5
<b>Duration</b>	18 months, full-time
<b>Location</b>	Porirua
<b>Whitireia</b>	

Enrolled nurses work under the direction and delegation of a registered nurse in a variety of health and disability settings. This programme provides theory and hands-on experience to develop the skills required to become an enrolled nurse.



“

We put what we learn into practice in the wonderful simulation labs”



KATHRYN – Nursing student

## Bachelor of Nursing

<b>Level</b>	7
<b>Duration</b>	3 years, full-time
<b>Location</b>	Porirua
<b>Whitireia</b>	

Become a registered nurse with a range of clinical skills on this supportive programme offering hands-on experience. Our nursing graduates are highly sought after for their practical, work-ready skills.

## Bachelor of Nursing Māori

<b>Level</b>	7
<b>Duration</b>	3 years, full-time
<b>Location</b>	Porirua
<b>Whitireia</b>	

This programme uses theoretical and clinical learning experiences designed to educate and support Māori students to become a New Zealand registered nurse, capable of working in a range of multicultural settings.

## Bachelor of Nursing Pacific

<b>Level</b>	7
<b>Duration</b>	3 years, full-time
<b>Location</b>	Porirua
<b>Whitireia</b>	

This programme uses theoretical and clinical learning experiences designed to educate and support Pacific students to become a New Zealand registered nurse, capable of working in a range of multicultural settings.

## Postgraduate Nursing, Health and Social Practice

### Competency Assessment Programme for Nurses (CAP)

<b>Level</b>	7
<b>Duration</b>	8 weeks
<b>Location</b>	Porirua

Whitireia

For nurses who are registered overseas or nurses who were registered or enrolled in New Zealand and want to return to clinical practice. This programme will support you to apply for an annual practising certificate.

### Postgraduate Certificate in Nursing

<b>Level</b>	8
<b>Duration</b>	1 year – Mental Health and Change of Scope 1-2 years – Nursing
<b>Location</b>	Online plus block courses

Whitireia

For registered nurses. Extend your knowledge with a clinically-focused programme. Choose to focus on Nursing or Mental Health and Addiction Nursing. You may gain credits towards Master's study.

### Postgraduate Certificate in Hospice Palliative Care

<b>Level</b>	8
<b>Duration</b>	1-2 years
<b>Location</b>	Online plus block courses

Whitireia

Explore palliative care philosophy and practice in a clinically-focused programme. For registered health professionals providing palliative care in aged care, hospital and community settings or hospices. You may gain credits towards Master's study.

### Postgraduate Certificate in Perioperative Specialty Nursing

<b>Level</b>	8
<b>Duration</b>	1-2 years
<b>Location</b>	Porirua, Christchurch (online plus block courses)

Whitireia

For registered nurses providing care for people undergoing surgery and other interventions such as investigative radiology. Advance your perioperative practice in assessment, management and service delivery. You may gain credits towards Master's study.

### Postgraduate Certificate in Primary Health Care Specialty Nursing

<b>Level</b>	8
<b>Duration</b>	1-2 years
<b>Location</b>	Online plus block courses

Whitireia

For registered nurses working in community and primary health, including aged care. Further your skills in your area of practice: Health of the Older Adult, Population and Personal Health or Well Child/Tamariki Ora (delivered in partnership with the Royal New Zealand Plunket Trust). You may gain credits towards Master's study.

### Postgraduate Certificate in Specialty Care

<b>Level</b>	8
<b>Duration</b>	1-2 years
<b>Location</b>	Online plus block courses

Whitireia

For registered health professionals to develop specialty knowledge. Choose two courses such as Specialty Practice, Clinical Leadership, Forensic Practice, Primary Mental Health Care, Dual Disability, Advanced Paramedic and Pacific Health. You may gain credits towards Master's study.



# Postgraduate Nursing, Health and Social Practice

## Postgraduate Diploma in Specialty Care

<b>Level</b>	8
<b>Duration</b>	1-3 years
<b>Location</b>	Online plus block courses

Whitireia

Extend your knowledge in a specific area: Pacific Health and Nursing, Māori Health and Nursing, Addiction, Child/Youth Health, Mental Health, Nursing, Older Adult Health, Palliative Care, Perioperative, Primary Health, or Trauma and Emergency Care. You may gain credits towards Master's study. For registered health professionals.

## Continuing Professional Development (CPD@Whitireia)

A range of workshops and online courses for nurses and health professionals to develop their knowledge and skills. Complete anytime, anywhere, at your own pace. Courses contribute to required professional development hours.

[cpd.whitireia.ac.nz](http://cpd.whitireia.ac.nz)

“

Psychiatric nursing is my passion. I gained the assessment skills to work in this field.”



**VANESSA – Postgraduate Nursing graduate**

## Postgraduate Certificate in Professional Practice

<b>Level</b>	8
<b>Duration</b>	17 weeks, full-time (part time options)
<b>Location</b>	Petone, Porirua

Whitireia

WelTec

The programme is designed so you can engage with other health and social service fields, and broaden your professional practice. Focus on collaboration and extend your ability to work in interprofessional teams. Develop your leadership skills. You may gain credits towards Master's study.

## Postgraduate Diploma in Professional Practice

<b>Level</b>	8
<b>Duration</b>	1 year, full-time (part-time options)
<b>Location</b>	Petone, Porirua

Whitireia

WelTec

Focus on learning research methods for health and social practice and apply them in an area of your choice. Gain specialist knowledge and leadership skills to work in inter-professional teams. Focus on the delivery of quality services to diverse people and communities. You may gain credits towards Master's study.

## Master of Professional Practice

<b>Level</b>	9
<b>Duration</b>	1.5 years, full-time (part-time options may be available)
<b>Location</b>	Petone, Porirua

Whitireia

WelTec

Lead practice at an advanced level in health and social services. Be an effective leader of inter-professional teams and work with diversity. Apply your study and research to your work. Choose to do a thesis or research project. The programme has an optional endorsement in education or leadership.

## Paramedic

### New Zealand Certificate in Emergency Care (First Responder)

<b>Level</b>	3
<b>Duration</b>	30 weeks, part-time
<b>Location</b>	Online plus block courses

Whitireia

Work in first responder roles in ambulances or settings such as outdoor education, marine, industrial and volunteer rescue. Sustain life until advanced medical care is available, learn to assess and manage medical trauma, and manage complex emergencies. You must hold a current first aid certificate.

### New Zealand Diploma in Ambulance Practice

<b>Level</b>	5
<b>Duration</b>	18 months, part-time
<b>Location</b>	Online plus block courses

Whitireia

Designed for people interested in a career in ambulance services. Learn core skills to manage and treat patients. You will be able to apply for the authority to practise as an Emergency Medical Technician (EMT) with a recognised ambulance service.

### Bachelor of Health Science (Paramedic)

<b>Level</b>	7
<b>Duration</b>	3 years, full-time
<b>Location</b>	Porirua or online plus block courses

Whitireia

Gain skills to provide emergency and non-urgent medical care in a range of situations. Know how to assess, stabilise, treat and refer patients. Learn through clinical placements in ambulances, hospitals and other situations. There is a flexible part-time option for working or volunteer paramedics with relevant industry qualifications.

## Health Assistance

### New Zealand Certificate in Health and Wellbeing (Health Assistance and Support Work)

<b>Level</b>	3
<b>Duration</b>	17 weeks, full-time
<b>Location</b>	Petone

Whitireia

WelTec

Be a caregiver or support worker. Choose to focus on health assistance for roles in hospitals and rest homes or support work to help those who need assistance in independent day-to-day living. Gain work experience in hospitals and rest homes.

### New Zealand Certificate in Health and Wellbeing (Community Health Work)

<b>Level</b>	4
<b>Duration</b>	1 year, full-time
<b>Location</b>	Online plus block courses

Whitireia

Work as a community health worker in child and whānau health. Focus on promoting health and well-being, working to build health literacy. Develop skills in building relationships, leadership and cultural responsiveness. Designed for those working in the sector. Delivered in partnership with Plunket.

### Diploma in Health Psychology: Hauora Hinengaro

<b>Level</b>	5
<b>Duration</b>	1 year, full-time
<b>Location</b>	Petone

WelTec

Ideal for students returning to study or those wanting to explore their options in the social services field. Explore psychology and human development with a focus on self-discovery. Examine how different factors influence our health. Develop academic and research skills.

## Health Psychology

## Exercise Science

### New Zealand Certificate in Exercise

<b>Level</b>	4
<b>Duration</b>	17 weeks, full-time
<b>Location</b>	Petone

WelTec

Work in the fitness industry as a fitness consultant or personal trainer. Understand and apply the fundamentals of anatomy and physiology for exercise programmes. Learn the skills needed to manage your own business. You'll be in our on-site gym virtually every day.

### New Zealand Diploma in Sport, Recreation and Exercise

<b>Level</b>	5
<b>Duration</b>	1 year, full-time
<b>Location</b>	Petone

WelTec

Build skills to work within the fitness, recreation and sport industries. Learn in our gym. Apply anatomy and physiology knowledge to movement, posture, exercise and injury management. Understand nutrition. Develop your coaching and event management skills.

“

Every day I am using the business skills I learnt. These skills are helping me grow my gym.”



OSCAR – Exercise Science graduate

## Veterinary Nursing and Animal Care

### New Zealand Certificate in Animal Care (Companion Animals)

<b>Level</b>	3
<b>Duration</b>	21 weeks, full-time
<b>Location</b>	Petone

WelTec

Learn how to care for a range of animals such as cats, dogs and rabbits. Gain work experience at Wellington SPCA. Develop knowledge and skills for the industry: animal handling techniques, health and husbandry, hygiene and more.

### New Zealand Certificate in Animal Technology (Veterinary Nursing Assistant)

<b>Level</b>	5
<b>Duration</b>	1 year, full-time
<b>Location</b>	Petone

WelTec

Become a veterinary nurse assistant. Learn and practise a range of clinical, surgical and diagnostic skills, both in the classroom as well as on work placement in veterinary clinics. You will be eligible to apply for registration with the New Zealand Veterinary Nursing Association.

### New Zealand Diploma in Veterinary Nursing

<b>Level</b>	6
<b>Duration</b>	1 year, full-time
<b>Location</b>	Petone

WelTec

Effectively manage and treat animals in a clinical environment through a combination of technical skill, medical knowledge and sound judgement in animal welfare. Practise your skills in local veterinary clinics and in our simulation clinic. You will be eligible to apply for New Zealand Veterinary Nursing Association registration.



## Foundation

### Right Start – Community

<b>Level</b>	2
<b>Duration</b>	17 weeks, full-time
<b>Location</b>	Petone, Porirua
<b>Whitireia</b>	<b>WelTec</b>

Enjoy helping people? Want to gain your NCEA Level 2? Start your study in social and community services and learn basic skills in community development, personal development and adventure-based learning. Study fees free. Go on to further study opportunities at Level 3 or 4.



### New Zealand Certificate in Study and Career Preparation (Level 3)

<b>Level</b>	3
<b>Duration</b>	17 weeks, full-time
<b>Location</b>	Wellington, Petone, Porirua
<b>Whitireia</b>	<b>WelTec</b>

Gain foundation knowledge and prepare for further study at Level 4 or above. Build learning skills and confidence. Learn in a supportive environment. Focus on Health Science or Social Services.

### New Zealand Certificate in Study and Career Preparation (Level 4)

<b>Level</b>	4
<b>Duration</b>	17 weeks, full-time
<b>Location</b>	Wellington, Petone, Porirua
<b>Whitireia</b>	<b>WelTec</b>

Prepare for higher study at Levels 5-7 (diploma and degree levels). Develop your academic skills. Focus on Health Science, Social Services, Funeral Services or Animal Care.

## Early Childhood Education

### Bachelor of Teaching (Early Childhood Education)

<b>Level</b>	7
<b>Duration</b>	3 years, full-time
<b>Location</b>	Porirua
<b>Whitireia</b>	

Become a confident and competent early childhood teacher with an excellent understanding of theory and social context in New Zealand. This programme includes practicum placements in early childhood centres. Graduates can apply for teacher registration with the Education Council.



All the knowledge the tutors have passed on will help when I go on placement."



**NIKITA – Foundation Social Services student**

## Funeral Services

### New Zealand Diploma in Funeral Directing

<b>Level</b>	5
<b>Duration</b>	1 year, part-time
<b>Location</b>	Online plus block courses at Petone

WelTec

Designed for people working in the industry. Gain in-depth knowledge of the procedures to successfully arrange, deliver and direct a funeral, as well as the administrative tasks. Present assignments on funerals you have arranged and directed. Graduates are recognised by industry associations FDANZ (Funeral Directors Association of New Zealand) and NZIFH (New Zealand Independent Funeral Homes).

### New Zealand Diploma in Embalming

<b>Level</b>	5
<b>Duration</b>	1 year, full-time
<b>Location</b>	Online plus block courses at Petone

WelTec

Designed for people working in the industry. Focus on the theory and practice of embalming and the art of restoring the human body to its usual appearance. Graduates are recognised by industry associations and can gain full membership to the NZEA (New Zealand Embalmers Association).

“

It's fantastic to see people wanting to gain professional qualifications and serve the bereaved.”



PIERRE – Funeral Services tutor

## Counselling and Addiction Studies

### Bachelor of Counselling and Addiction Practice

<b>Level</b>	7
<b>Duration</b>	3 years, full-time (part-time options)
<b>Location</b>	Porirua, Auckland (online plus block courses)

WelTec

Promote wellbeing and harm reduction to individuals, whānau and communities. Gain the skills and knowledge the industry is looking for and become a culturally-competent counselling and addiction practitioner. Learn in a supportive environment. Practise scenarios in the classroom. Complete work placements to gain experience.



“

I'm now a counsellor helping university students with a wide range of issues.”



PATTI – Counselling graduate

## Social and Community Work

### New Zealand Certificate in Health and Wellbeing (Mental Health and Addiction Support)

<b>Level</b>	4
<b>Duration</b>	1 year, full-time
<b>Location</b>	Online plus block courses at Porirua

Whitireia

Foster hope, support recovery and build resilience. Focus on mental health and addiction issues. Learn about interventions and treatments, building relationships and developing wellbeing. Understand relevant legislation and the role of support workers. Designed for those working in the sector.

### Bachelor of Social Work

<b>Level</b>	7
<b>Duration</b>	4 years, full-time (part-time options)
<b>Location</b>	Porirua

Whitireia

Help people develop their full potential. Become a social work professional whose practice is underpinned by reflective and critical thinking. Understand the context of individuals, families and communities. Work towards Social Workers Registration Board (SWRB) registration.

“

It's hard for many young people growing up so it's nice to give back and help them.”



REUBEN – Social Work student

## Youth Development

### Bachelor of Youth Development

<b>Level</b>	7
<b>Duration</b>	3 years, full-time (part-time options)
<b>Location</b>	Porirua, Online plus block courses at Porirua

WelTec

Help young people thrive. Further your skills or start a new journey in youth work with New Zealand's only specialist youth development degree. Explore current issues in youth development. Learn through simulated situations and work experience. Graduates can apply for teacher registration with Korowai Tupu.

### Graduate Diploma in Youth Development

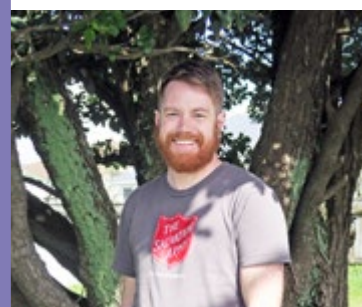
<b>Level</b>	7
<b>Duration</b>	1 year, full-time (part-time options)
<b>Location</b>	Porirua (online plus regular classes)

WelTec

Ideal for experienced practitioners in related fields or youth workers to upskill in youth development. Support positive development in young people by understanding the political, sociological and cultural factors that influence their identities. Graduates can apply for teacher registration with Korowai Tupu.

“

The theory gives you a framework for your practice and helps you to understand why you do what you do.”



STEWART – Youth Development graduate





“ ”

It can be hard work,  
but it's lots of fun too.





Student Information Centre  
Petone Campus  
21 Kensington Avenue  
Petone 5012

[www.weltec.ac.nz](http://www.weltec.ac.nz)  
0800 935 832  
[info@weltec.ac.nz](mailto:info@weltec.ac.nz)



Information & Enrolment  
Porirua Campus  
3 Wi Neera Drive  
Porirua 5022

[www.whitireia.ac.nz](http://www.whitireia.ac.nz)  
0800 944 847  
[info@whitireia.ac.nz](mailto:info@whitireia.ac.nz)

Whitireia and WelTec are strategic partners  
delivering more choice to students

## WHITIREIA

[www.whitireia.ac.nz](http://www.whitireia.ac.nz)

0800 944 847

[info@whitireia.ac.nz](mailto:info@whitireia.ac.nz)



**Whitireia**  
NEW ZEALAND

## WELTEC

[www.weltec.ac.nz](http://www.weltec.ac.nz)

0800 935 832

[info@weltec.ac.nz](mailto:info@weltec.ac.nz)



**WelTec**

### DISCLAIMER

The information in this prospectus describes the programmes and services we intend to offer in 2019, as is correct at January 2019. Programmes and information in this prospectus may change. Some programmes are dependent on formal approval, government funding or the number of enrolments. Please check the relevant website or contact us for the latest information.

## CONNECT

Follow our social media channels across Whitireia, WelTec and Te Auaha.

