

INTERNATIONAL STUDENT PROSPECTUS

AUT

AUCKLAND UNIVERSITY
OF TECHNOLOGY

NEW ZEALAND

TOP  1%
UNIVERSITIES
WORLDWIDE



Kia ora,

At AUT, we are dedicated to supporting our students on their journey to becoming great graduates. When you study as an international student at AUT, you will join 4,700 international students from 143 countries at the second largest university in New Zealand. We know that choosing to study away from home can be a daunting decision. Our AUT International and student services teams are devoted to your experience, helping you every step of the way, from application and enrolment right through to graduation.

Ranked first for international outlook, with 100,000 alumni flourishing worldwide, we pride ourselves on providing exceptional learning experiences, guided by world-class academics and support staff, in state-of-the-art facilities. Our global network of exceptional industry and tertiary partners provides endless opportunities to broaden your experience even further.

We are delighted you are considering AUT. We look forward to being part of your journey.

Professor Guy Littlefair

Pro Vice-Chancellor International
Dean, Faculty of Design and Creative Technologies

CONTENTS

Study in Auckland, the world's most liveable city	4
New Zealand, one of the safest and friendliest places to study	6
One of the world's best modern universities	8
Life at AUT	10
Beyond learning and into employability	12
Global partnerships	14
Business, Economics & Law	16
Culture & Society	20
Design & Creative Technologies	26
Health & Environmental Sciences	32
Doctorates and graduate research programmes	38
Online programmes for offshore international students	40
Study Abroad programme	42
Entry requirements	44
English language requirements	50
Improve your English at AUT International House	52
Pathways to degree study for international students	54
Scholarships & fees	56
Your new home: living on campus	58
How to apply	60
Preparing to study in New Zealand	62
Find out more	64

#1 IN NEW ZEALAND
FOR
INTERNATIONAL
OUTLOOK

Times Higher Education rankings

TOP
RATED
FOR
ACADEMIC
TEACHING

29,100
STUDENTS

143

Our students were
born in 143 countries



60+ research centres and
institutes with world-
class expertise



Employability, Facilities,
Inclusiveness, Innovation,
Internationalisation,
Research & Teaching

QS STARS 2020-22

#1 MOST
LIVEABLE
CITY
IN THE WORLD

Economist Intelligence Unit 2021
Global Liveability Index



New Zealand is the second most
peaceful country in the world

Global Peace Index

STUDY IN AUCKLAND, THE WORLD'S MOST LIVEABLE CITY

Voted the world's most liveable city¹, Auckland is New Zealand's largest city and one of our fastest growing, with 1.5 million people and home to a third of New Zealand's population.

Situated on a beautiful harbour, Auckland has all the advantages of a big city – with a thriving business sector, major events, cafés, restaurants and bars, and the world's best-known brands in Auckland's shopping precincts. It's a vibrant place that celebrates cultural diversity and is known for events like the Pasifika Festival, Chinese New Year Lantern Festival and Diwali, each of which attracts thousands of visitors each year.

Facts about Auckland:



Subtropical and pleasant climate all year. The summers average a pleasant 25°C and winters average a mild 11°C



New Zealand's economic powerhouse, with easy access to key international markets, especially in the Asia Pacific region



1,500 kms of coastline with more than 80 beaches, many accessible from the city centre



Also known as the City of Sails



One of the most culturally diverse cities in the world with one in three Aucklanders born overseas



Auckland Harbour Bridge

Climb or bungee jump off this landmark which connects the city to North Shore beaches



Rangitoto Island

Enjoy 360-degree views from this island, only a short ferry ride from Auckland City



Westhaven Marina

Gaze at the awe-inspiring super yachts at this marine activity hub right in the city



North Head

Explore tunnels, guns, searchlights and other fortifications in this historic war time defence fort



Waiheke Island

Beautiful vineyards, olive groves and beaches only a 40-minute ferry ride from downtown Auckland



Kelly Tarltons

Swim with sharks or get up close and personal with penguins at this underwater aquarium



Eastern beaches

Relax in one of the many on-street cafes, picnic areas and safe sandy beaches



Viaduct Harbour

This beautiful waterfront destination offers great nightlife and over 30 restaurants



Shopping and dining

Enjoy some retail therapy with the world's top brands or visit Commercial Bay for a range of dining options for all budgets



Sky Tower

Standing at 328 metres tall, you can experience dining and breath-taking views



AUT City Campus

Located perfectly so you can explore shops, galleries and parks all within walking distance

¹ 2021 Global Liveability Index by the Economist Intelligence Unit (EIU)



NEW ZEALAND, ONE OF THE SAFEST AND FRIENDLIEST PLACES TO STUDY

New Zealand is similar in size to the UK or Japan, but with only 5 million people, you will have plenty of space to be yourself and enjoy your time studying with us.

Friendly and welcoming

New Zealanders – also called Kiwis – are known for being friendly and open-minded, and you will find it easy to fit in and make new friends. In Māori, New Zealand is known as Aotearoa ('land of the long white cloud'). Experiencing New Zealand's unique Māori culture is an important part of the student experience, and you will have many opportunities to do so.

A safe study destination

New Zealand is one of the safest countries in the world, ranked the second most peaceful country in the world in the Global Peace Index.

A high standard of living

The standard of living is high, and New Zealand ranks above average for the quality of its education, healthcare, government services, income and wealth, and infrastructure.

Work while you study

You may be able to work part-time while you study, giving you valuable New Zealand work experience. A post-study work visa may be available to you after graduating.

Stable and democratic

New Zealand is economically strong and politically stable, with transparent laws that protect the rights of all its people.

A great lifestyle

Consistently leading world quality of life studies, New Zealand offers a great lifestyle, stunning scenery and lots of adventures – whether you want to go bungee jumping or jetboating or explore the country's beautiful nature.

ONE OF THE WORLD'S BEST MODERN UNIVERSITIES

Widely known for academic excellence

Auckland University of Technology (AUT) is the second largest university in New Zealand, with three campuses across Auckland. We're proud to be one of the world's best modern universities. Times Higher Education has ranked us in the top 40 universities under 50 years of age, and among the top 1% (201-250) of universities in the world and equal second in New Zealand. We have an overall five-star rating from university rankings organisation QS, in addition to five-star ratings for Teaching, Employability, Research, Internationalisation, Facilities, Innovation and Inclusiveness. We also have prestigious international accreditations from both AACSB and EQUIS for our business school, and Engineering New Zealand for our engineering programmes.

A modern university education

AUT offers exceptional learning experiences that prepare students to be successful wherever in the world their career may take them. We have over 29,000 students from 143 countries enrolled in our 250 courses up to doctoral level. Across all of our courses, we encourage innovation and entrepreneurship, and the ability to explore new technologies, challenge routine thinking and solve problems in new ways. We embrace new technologies to lead the learning of tomorrow and prepare our students for the rapidly changing world.

Research that shapes tomorrow

AUT leads Australasia in global research impact, and we're ranked first in Australasia by university rankings organisation Times Higher Education for the number of times our research is cited globally. We have more than 60 research centres and institutes delivering leading research – from artificial intelligence and robotics to ecology and public health. AUT research discoveries are widely used, both in New Zealand and around the world. Our research also feeds back into the classroom, and students can contribute to and learn from these research discoveries.

An innovative teaching and learning environment

AUT's three campuses – the City Campus in Auckland's CBD, North Campus on the North Shore and South Campus in South Auckland – feature modern buildings that don't just win architecture awards but also provide excellent collaborative environments where students develop skills that help them stand out in their future careers. We have a number of world-class facilities including one of only a handful of motion capture studios in the country; New Zealand's top sports science facility, AUT Millennium; and the country's only two major radio telescopes, which are involved in projects with international research partners. AUT's success in creating transformational educational spaces has been recognised with a five-star ranking for teaching and facilities from QS.

World-leading academic staff

Our academic staff are research-active and at the forefront of their disciplines. They are frequently awarded prestigious research grants and fellowships, and are sought after for their expertise as postgraduate supervisors. Many of them are internationally known as experts in their fields, and organisations around the world draw on their expertise for key projects. For example, Associate Professor Barbara Bollard's innovative use of drones to monitor remote ecosystems has caught the attention of scientists from NASA. Professor Steve Henry was the first person in Australasia to join the Johnson & Johnson Innovation JLABS in Houston to advance his Kode Technology, which has the potential to fight cancer. Professor Rhema Vaithianathan is globally recognised for implementing machine learning tools for child protection and other high stakes government systems.



LIFE AT AUT

AUT is a modern and innovative university with endless opportunities, and a supportive culture that celebrates diversity and is committed to improving our local and global communities. Our students are at the heart of everything we do, and we're proactive in enabling them to succeed and be ready for any challenge in front of them.

Getting you started on your university journey

Studying at university is exciting and can be quite an adjustment. That is why AUT helps new students transition to university life by delivering a wide-ranging orientation programme on campus and online at the start of each semester. Orientation is complemented by a fun social programme to help you meet new friends and celebrate the new journey you're on. AUT's app also provides up-to-date news, events, and information about AUT anytime, anywhere.

Helping you achieve your academic goals

We do everything we can to help you achieve your academic goals and set you up for a successful career. Our support services include academic support, childcare, free technology access and financial assistance, as well as tailored support for our postgraduate research students. AUT offers some of the most comprehensive student support services in New Zealand, and our Student Hub is the best place to learn more about these services.



A home away from home

We want you and your family to feel comfortable and confident that you're being looked after when you're at AUT. Safety for students on campus is our priority, and our friendly security staff are available day and night to help. All AUT students also have access to medical centres on campus, free and confidential counselling sessions, peer support and programmes to develop better self-knowledge and resilience.

A vibrant university experience

We want you to make the most of university life, and have fun and grow during your time with us. Our clubs are student-led and cover social, sustainability, cultural and academic interests. AUT is a leading sports university, with state-of-the-art sports facilities at AUT Millennium, gyms at every campus, and a swimming pool and courts for tennis, volleyball, basketball and other sports at the South Campus. Our brand-new Te Āhuru Recreation Centre at the City Campus is also a great space to connect with friends and follow your interests.



Dedicated support for international students

From bilingual staff at the Student Hub who may speak your language to a dedicated team that works across time zones, we make sure you feel at home in New Zealand. Our international student support team can help you with immigration matters, visas, insurance, accommodation, setting up a bank account, talking to faculties and any questions about life in New Zealand.

Free technology access

As an AUT student, you can access wifi on campus, the full Microsoft Office 365 suite and LinkedIn Learning (lynda.com). You also enjoy remote access to all AUT computers to use specialist software unavailable on personal devices.



Celebrating our people

We celebrate diversity with passion, curiosity and pride. Our students come from 143 countries, and some of our bilingual staff at the Student Hub can talk to you in your preferred language. AUT respects everyone's spiritual views, and you can access our multi-faith and prayer rooms, or get support from our chaplains. We're committed to equity of access and opportunity for students, staff and visitors, and have a dedicated disability support team. We were the first university in New Zealand to achieve the Rainbow Tick, and our Student Association (AUTSA) represents the interests of all AUT students.



Supporting you during the COVID-19 pandemic

Since the start of the pandemic, AUT's approach has been based on official guidance from the New Zealand government and we've put in place contingency plans to ensure students can successfully complete their studies during any alert level. Our plans focus on keeping students as safe as possible, while retaining as much of the normal learning and wider student experience as we can.

WHERE IN THE WORLD ARE AUT ALUMNI?

**AUT's more than 100,000 alumni
live and work around the globe in
organisations like:**

Adidas
Portland, USA

**Ministry of Primary
Industries**
Auckland

BBC
London, UK

Pinterest
San Francisco, USA

Canada Soccer
Vancouver, Canada

Qantas
Sydney, Australia

Cleo
Singapore

Shopify
Ottawa, Canada

**Commonwealth Bank of
Australia**
Sydney, Australia

University of California
San Diego, USA

Google Singapore
Singapore

University of Cambridge
Cambridge, UK

**High Performance Sport
New Zealand**
Auckland

Viacom
Amsterdam,
The Netherlands

Huawei
Shanghai, China

Vogue
Bangkok, Thailand

KPMG Australia
Melbourne, Australia

Westpac Singapore
Singapore

Lululemon
Vancouver, Canada

Weta Digital
Wellington

**World Health
Organization**
Geneva, Switzerland

BEYOND LEARNING AND INTO EMPLOYABILITY

AUT is proud of creating well-rounded graduates ready to succeed in New Zealand and the world. Our services, competitions and awards offer you enriching life experiences that will support your career once you graduate.

Supporting your future career

Our specialist teams help you be ready for the workforce, from your first day at uni to your first day in your future job. You can access a full programme of employer presentations, events and workshops throughout the year, and we also have four graduate job boards, including international career options, with great work opportunities for AUT graduates and interns.

Gain an AUT edge

The AUT Edge and Beyond AUT Awards help you gain an extra edge in the competitive marketplace by developing sought-after skills through volunteering, leadership, and employability activities.

Fuelling aspiring entrepreneurs

A great incubator for entrepreneurial minds, AUT has a range of programmes and initiatives to help you turn your ideas into a viable business. Choose from a ten-week CO.STARTERS@AUT programme to take your business idea further, compete for cash prizes through our X Challenge competition or work with AUT Ventures Ltd to bring your ideas to market.

Industry experience

AUT works directly with industry partners to ensure you get practical workplace experience as part of your qualification. 92% of bachelor's degree students complete workplace experience as part of their studies with us, and thanks to our ever-deepening industry connections you can choose from a vast number of host organisations for your placement. For many students the workplace experience also opens the door to their very first job.



GLOBAL PARTNERSHIPS

Collaboration and partnership underpin everything we do and we're connected to an extraordinary range of universities and other organisations worldwide; sharing expertise and resources, collaborating on groundbreaking research and enabling students to gain valuable overseas experiences.

To find out more about our global partnerships email international@aut.ac.nz

Student exchange programmes

Go on a student exchange and spend an unforgettable semester or year at one of AUT's exchange partner universities around the world.

Short-term international opportunities

Take part in our short-term international opportunities like internships, volunteering and language courses.

Partnership programmes

We deliver some of our study programmes internationally with prestigious universities around the globe, including in China, Indonesia and Vietnam.

Research partnerships

We have collaborated on research projects with partner organisations from 140 different countries. As a postgraduate student you could be involved in this research yourself.

International internships

Through the AUT Internz programme, 200 new AUT graduates have had their first taste of working life in the USA, Canada and Singapore, interning for companies like Allbirds, Lululemon, Paramount Recording Studios or Facebook.

Workplace experience

Many of our students have completed their workplace experience overseas – from Westpac in Hong Kong to Volvo in Australia.

GO OVERSEAS AS PART OF YOUR AUT DEGREE

Many of our students do a semester or two at one of our partner universities on an international student exchange as part of their AUT degree.

Students will be immersed in another culture, meet new people and gain international experience. You can cross-credit the points you complete back to your AUT degree and continue your studies when you return to New Zealand.

Here are just a few reasons why you should go on exchange:

- Learn a lot – both academically and personally
- Return to AUT with more self-confidence and maturity
- Add value to your degree by experiencing different teaching styles and taking different courses

BUSINESS, ECONOMICS & LAW

AUT's Faculty of Business, Economics and Law offers world-class education in a range of undergraduate and postgraduate qualifications, preparing students well for business, economics and law careers. In all of our programmes, there's a strong focus on partnerships with industry organisations and the community, making it easy for students to transition from university to their future career.

The AUT Business School has been awarded the prestigious EQUIS and AACSB accreditations, putting it in the top 5% of business schools in the world. University rankings organisation QS also ranks all of our business and economics subjects in the top 350 in the world, with our accounting and finance programmes ranked in the top 150 globally.

BUSINESS (UNDERGRADUATE)

Programme	Duration	Intake	2022 tuition fees \$NZ	2023 tuition fees \$NZ (indicative only)
Diploma in Business	1 year	Feb/Jul	32,000 (full tuition fee)	32,600 (full tuition fee)
Bachelor of Business <ul style="list-style-type: none"> Accounting Economics Finance Human Resource Management and Employment Relations Information Systems International Business and Strategy Management and Leadership Marketing 	3 years	Feb/Jul	31,900 (for one year (120 points) only)	32,500 (for one year (120 points) only)
Graduate Diploma in Business	1 year	Feb/Jul	31,900 (full tuition fee)	32,500 (full tuition fee)

BUSINESS (PROFESSIONAL POSTGRADUATE)

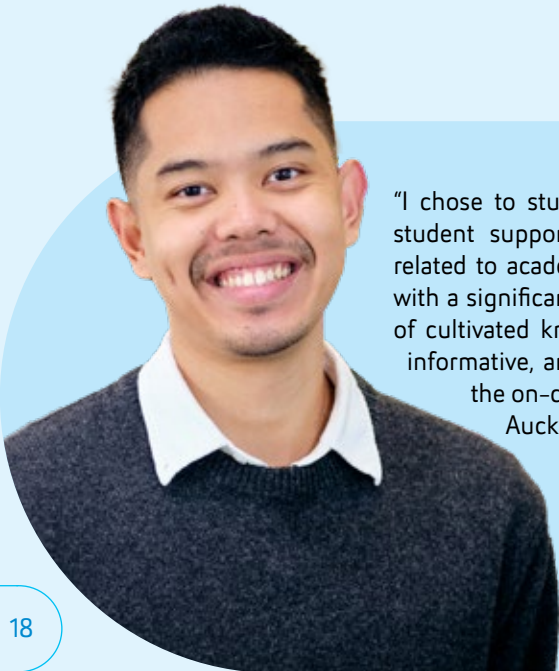
Programme	Duration	Intake	2022 tuition fees \$NZ	2023 tuition fees \$NZ (indicative only)
Postgraduate Certificate in Business Studies	6 months	Feb/Oct	16,700 (full tuition fee)	17,000 (full tuition fee)
Postgraduate Certificate in Professional Accounting	6 months	Feb/Oct	16,650 (full tuition fee)	17,000 (full tuition fee)
Postgraduate Diploma in Applied Finance	8 months to 1 year	Feb/Oct	33,300 (full tuition fee)	34,000 (full tuition fee)
Postgraduate Diploma in Business Administration	8 months to 1 year	Feb/May/Jul/Sep	35,800 (full tuition fee)	36,500 (full tuition fee)
Postgraduate Diploma in Business Management	8 months to 1 year	Feb/Oct	33,300 (full tuition fee)	34,000 (full tuition fee)
Postgraduate Diploma in Global Business	8 months to 1 year	Feb/Oct	33,300 (full tuition fee)	34,000 (full tuition fee)
Postgraduate Diploma in Marketing	8 months to 1 year	Feb/Oct	33,000 (full tuition fee)	34,000 (full tuition fee)
Postgraduate Diploma in Professional Accounting	8 months to 1 year	Feb/Oct	33,300 (full tuition fee)	34,000 (full tuition fee)
Postgraduate Diploma in Supply Chain Management	8 months to 1 year	Feb/Oct	33,000 (full tuition fee)	34,000 (full tuition fee)
Master of Applied Finance	1-1½ years	Feb/Oct	49,950 (full tuition fee)	51,009 (full tuition fee)
Master of Business Administration	1-1½ years	Feb/May/Jul/Sep	53,700 (full tuition fee)	54,750 (full tuition fee)

BUSINESS (PROFESSIONAL POSTGRADUATE) continued

Programme	Duration	Intake	2022 tuition fees \$NZ	2023 tuition fees \$NZ (indicative only)
Master of Business Management	1-1½ years	Feb/Oct	49,950 (full tuition fee)	51,009 (full tuition fee)
Master of Global Business	1-1½ years	Feb/Oct	49,950 (full tuition fee)	51,009 (full tuition fee)
Master of Marketing	1-1½ years	Feb/Oct	49,950 (full tuition fee)	51,009 (full tuition fee)
Master of Professional Accounting	1½ years	Feb/Oct	49,950 (full tuition fee)	51,000 (full tuition fee)
Master of Supply Chain Management	1-1½ years	Feb/Oct	49,950 (full tuition fee)	51,009 (full tuition fee)

BUSINESS (RESEARCH POSTGRADUATE)

Programme	Duration	Intake	2022 tuition fees \$NZ	2023 tuition fees \$NZ (indicative only)
Postgraduate Diploma in Business	1 year	Feb/Jul	33,330 (full tuition fee)	34,000 (full tuition fee)
Master of Business	1½ years	Feb/Jul	33,300 (for one year (120 points) only)	34,000 (for one year (120 points) only)



"I chose to study at AUT because AUT is known for having one of the best student support systems, meaning I can confidently get help, whether it's related to academic, health or wellbeing support. I like that AUT is a university with a significant number of academic staff who are ready to transfer their years of cultivated knowledge to me. The classes at AUT are highly interactive and informative, and AUT is dedicated to making online learning as interactive as the on-campus classes. I also appreciate that AUT is located in the heart of Auckland, the biggest city in New Zealand, where the opportunities lie."

Inthavath Douangta
Laos
Master of Global Business student
Graduate Diploma in Business

LAW (UNDERGRADUATE)

Programme	Duration	Intake	2022 tuition fees \$NZ	2023 tuition fees \$NZ (indicative only)
Certificate in Legal Studies	6 months	Feb	16,000 (full tuition fee)	16,300 (full tuition fee)
Bachelor of Laws	4 years	Feb	33,800 (for one year (120 points) only)	34,500 (for one year (120 points) only)

LAW (POSTGRADUATE)

Programme	Duration	Intake	2022 tuition fees \$NZ	2023 tuition fees \$NZ (indicative only)
Postgraduate Certificate in Law	6 months	Feb/Jul	17,700 (full tuition fee)	18,100 (full tuition fee)
Master of Laws	1 year	Feb/Jul	35,400 (full tuition fee)	36,100 (full tuition fee)

All fees above are in New Zealand dollars and include GST. Tuition fees are subject to change and are reviewed annually. AUT reserves the right to change these published fees before enrolment to reflect any changes in government or university policy. If you're taking courses as part of your qualification in the following academic year, you may be subject to a price increase for those courses.

"I appreciated that at AUT every lecture was supported by a tutorial session where students could instantly practise what they learned in their lectures. I also had many lecturers who helped me overcome any difficulties I faced in my first year in New Zealand and achieve good academic results. AUT always adequately provided us with contemporary facilities and software to best support our studies. Taking part in club activities and attending workshops organised by AUT also made me feel more comfortable about communicating with new people here."

Thai Ha Nguyen
Vietnam
Data Assurance Associate, PwC, Auckland
Master of Business
Bachelor of Business in Accounting and Business Information Systems



CULTURE & SOCIETY

AUT’s Faculty of Culture and Society offers a wide range of programmes in education, hospitality and tourism, language and culture, and social sciences and public policy. Study with us and you will learn from world-class academic staff who are passionate about their subject areas. Many of them are widely known for their expertise, and our strong research focus can be seen in the outstanding reputation of our various research institutes and centres.

We’re proud of our world-leading programmes. University rankings organisation QS has ranked us first in New Zealand and in the world’s top 100 for our hospitality and leisure programmes, and Times Higher Education places us in the top 200 globally for social sciences and in the top 250 in the world for arts and humanities. Our Bachelor of International Tourism Management is accredited by the United Nations World Tourism Organization (UNWTO) for higher tourism education, training and research programmes.

EDUCATION (UNDERGRADUATE)

Programme	Duration	Intake	2022 tuition fees \$NZ	2023 tuition fees \$NZ (indicative only)
Certificate in Arts	6 months	Feb/Jul	15,300 (full tuition fee)	15,600 (full tuition fee)
Diploma in Arts	1 year	Feb/Jul	30,600 (full tuition fee)	31,100 (full tuition fee)
Bachelor of Arts in Education	3 years	Feb/Jul	30,400 (for one year (120 points) only)	31,000 (for one year (120 points) only)
Bachelor of Education ([Specialty] Teaching) <ul style="list-style-type: none"> Early Childhood Teaching Primary Teaching 	3 years	Feb	30,400 (for one year (120 points) only)	31,000 (for one year (120 points) only)
Graduate Certificate in Arts	6 months	Feb/Jul	15,200 (full tuition fee)	15,500 (full tuition fee)
Graduate Diploma in Arts	1 year	Feb/Jul	30,400 (full tuition fee)	31,000 (full tuition fee)
Graduate Diploma in Secondary Teaching	1 year	Feb/Jul	31,000 (full tuition fee)	31,600 (full tuition fee)

EDUCATION (POSTGRADUATE)

Programme	Duration	Intake	2022 tuition fees \$NZ	2023 tuition fees \$NZ (indicative only)
Postgraduate Certificate in Education	6 months	Feb/Jul	16,500 (full tuition fee)	16,800 (full tuition fee)
Postgraduate Diploma in Education	1 year	Feb/Jul	32,900 (full tuition fee)	33,600 (full tuition fee)
Postgraduate Diploma in Teaching and Learning <ul style="list-style-type: none"> Early Childhood Teaching Primary Teaching 	1 year	Feb	32,100 (full tuition fee)	33,400 (full tuition fee)
Master of Education <ul style="list-style-type: none"> Education Practice Educational Leadership Higher Education 	1½ years	Feb/Jul	32,900 (for one year (120 points) only)	33,600 (for one year (120 points) only)
Master of Teaching and Learning <ul style="list-style-type: none"> Early Childhood Teaching Primary Teaching 	1 year	Feb	49,800 (full tuition fee)	51,300 (full tuition fee)

“AUT has great academic staff and resources in its tourism programmes. Studying tourism will literally open up the world for you – it will lead to a career where you can both travel and work at the same time! I really enjoyed meeting new people and experiencing a new culture in such a beautiful country, and meeting good friends from around the world. My advice for other international students is to make the most of your time in New Zealand. Travel and enjoy the beauty of New Zealand while you can.”

Rahmawati Taqwa
Indonesia
 Head of Public Relations Division, Tourism Board, Rote Ndao, Indonesia
 Master of International Tourism Management



HOSPITALITY, TOURISM & EVENTS (UNDERGRADUATE)

Programme	Duration	Intake	2022 tuition fees \$NZ	2023 tuition fees \$NZ (indicative only)
Certificate in Arts	6 months	Feb/Jul	15,300 (full tuition fee)	15,600 (full tuition fee)
Diploma in Arts	1 year	Feb/Jul	30,600 (full tuition fee)	31,100 (full tuition fee)
Diploma in Culinary Arts	2 years	Feb/Jul	31,800 (for one year (120 points) only)	32,300 (for one year (120 points) only)
Diploma in Pâtisserie	2 years	Feb	31,800 (for one year (120 points) only)	32,300 (for one year (120 points) only)
Bachelor of Arts <ul style="list-style-type: none">Culinary ArtsEvent Management	3 years	Feb/Jul	30,400 (for one year (120 points) only)	31,000 (for one year (120 points) only)
Bachelor of International Hospitality Management <ul style="list-style-type: none">Hospitality and SocietyHospitality EnterpriseHospitality Management	3 years	Feb/Jul	33,700 (for one year (120 points) only)	34,700 (for one year (120 points) only)
Bachelor of International Tourism Management <ul style="list-style-type: none">Sustainable Tourism ManagementTravel Management	3 years	Feb/Jul	33,700 (for one year (120 points) only)	34,700 (for one year (120 points) only)
Graduate Certificate in Arts	6 months	Feb/Jul	15,200 (full tuition fee)	15,500 (full tuition fee)
Graduate Certificate in International Hospitality Management	6 months	Feb/Jul	16,900 (full tuition fee)	17,400 (full tuition fees)
Graduate Certificate in International Tourism Management	6 months	Feb/Jul	16,900 (full tuition fee)	17,400 (full tuition fees)
Graduate Diploma in Arts	1 year	Feb/Jul	30,400 (full tuition fee)	31,000 (full tuition fee)
Graduate Diploma in International Hospitality Management	1 year	Feb/Jul	33,700 (full tuition fee)	34,700 (full tuition fee)
Graduate Diploma in International Tourism Management	1 year	Feb/Jul	33,700 (full tuition fee)	34,700 (full tuition fee)



“What I enjoyed most about studying at AUT were the smaller classes, and being able to connect with likeminded individuals who share the same passion for human rights. I feel that I received a more personalised learning experience, and my voice and opinions were heard and appreciated. At first, I had to adjust to a new lifestyle, new grading system and programme style while also building a new support system in New Zealand, all during a global health pandemic. The support and advice I’ve received from AUT’s Student Hub and my lecturers helped me tremendously with this.”

Briana Nezbah Edmo
USA
Social Justice Research Fellow, First Peoples Worldwide,
Albuquerque, New Mexico, USA
Master of Human Rights

HOSPITALITY, TOURISM & EVENTS (POSTGRADUATE)

Programme	Duration	Intake	2022 tuition fees \$NZ	2023 tuition fees \$NZ (indicative only)
Postgraduate Certificate in Gastronomy	6 months	Feb/Jul	17,200 (full tuition fee)	17,500 (full tuition fee)
Postgraduate Certificate in International Hospitality Management	6 months	Feb/Jul	17,700 (full tuition fee)	18,200 (full tuition fee)
Postgraduate Certificate in International Tourism Management	6 months	Feb/Jul	17,700 (full tuition fee)	18,200 (full tuition fee)
Postgraduate Diploma in Gastronomy	1 year	Feb/Jul	34,400 (full tuition fee)	35,100 (full tuition fee)
Postgraduate Diploma in International Hospitality Management	1 year	Feb/Jul	35,400 (full tuition fee)	36,500 (full tuition fee)
Postgraduate Diploma in International Tourism Management	1 year	Feb/Jul	35,400 (full tuition fee)	36,500 (full tuition fee)
Master of Gastronomy	1½ years	Feb/Jul	34,400 (for one year (120 points) only)	35,100 (for one year (120 points) only)
Master of International Hospitality Management	1½ years	Feb/Jul	35,400 (for one year (120 points) only)	36,500 (for one year (120 points) only)
Master of International Tourism Management	1½ years	Feb/Jul	35,400 (for one year (120 points) only)	36,500 (for one year (120 points) only)

LANGUAGE & CULTURE (UNDERGRADUATE)

Programme	Duration	Intake	2022 tuition fees \$NZ	2023 tuition fees \$NZ (indicative only)
Certificate in Arts	6 months	Feb/Jul	15,300 (full tuition fee)	15,600 (full tuition fee)
Diploma in Arts	1 year	Feb/Jul	30,600 (full tuition fee)	31,100 (full tuition fee)
Diploma in Japanese	2 years	Feb/Jul	30,600 (for one year (120 points) only)	31,100 (for one year (120 points) only)
Bachelor of Arts <ul style="list-style-type: none">Chinese StudiesCreative WritingEnglish and New Media StudiesInternational StudiesInterpretingJapanese StudiesNew Zealand Sign Language and Deaf StudiesNew Zealand Sign Language – English Interpreting	3 years	Feb/Jul	30,400 (for one year (120 points) only)	31,000 (for one year (120 points) only)
Graduate Certificate in Arts	6 months	Feb/Jul	15,200 (full tuition fee)	15,500 (full tuition fee)
Graduate Diploma in Arts	1 year	Feb/Jul	30,400 (full tuition fee)	31,000 (full tuition fee)

LANGUAGE & CULTURE (POSTGRADUATE)

Programme	Duration	Intake	2022 tuition fees \$NZ	2023 tuition fees \$NZ (indicative only)
Postgraduate Certificate in English and New Media Studies	6 months	Feb/Jul	17,200 (full tuition fee)	17,500 (full tuition fee)
Postgraduate Certificate in Language and Culture	6 months	Feb/Jul	17,200 (full tuition fee)	17,500 (full tuition fee)
Postgraduate Diploma in English and New Media Studies	1 year	Feb/Jul	34,400 (full tuition fee)	35,100 (full tuition fee)
Postgraduate Diploma in Language and Culture	1 year	Feb/Jul	34,400 (full tuition fee)	35,100 (full tuition fee)
Master of Creative Writing	1 year	Feb	34,400 (full tuition fee)	35,100 (full tuition fee)
Master of English and New Media Studies	1½ years	Feb/Jul	34,400 (for one year (120 points) only)	35,100 (for one year (120 points) only)
Master of Language and Culture	1½ years	Feb/Jul	34,400 (for one year (120 points) only)	35,100 (for one year (120 points) only)
Master of Professional Language Studies – Language Teaching	1 year	Feb/Jul	32,900 (full tuition fee)	33,600 (full tuition fee)

SOCIAL SCIENCES & PUBLIC POLICY (UNDERGRADUATE)

Programme	Duration	Intake	2022 tuition fees \$NZ	2023 tuition fees \$NZ (indicative only)
Certificate in Arts	6 months	Feb/Jul	15,300 (full tuition fee)	15,600 (full tuition fee)
Diploma in Arts	1 year	Feb/Jul	30,600 (full tuition fee)	31,100 (full tuition fee)
Bachelor of Arts <ul style="list-style-type: none">• Conflict Resolution• Criminology and Criminal Justice• Economics• Psychology• Social Sciences	3 years	Feb/Jul	30,400 (for one year (120 points) only)	31,000 (for one year (120 points) only)
Graduate Certificate in Arts	6 months	Feb/Jul	15,200 (full tuition fee)	15,500 (full tuition fee)
Graduate Diploma in Arts	1 year	Feb/Jul	30,400 (full tuition fee)	31,000 (full tuition fee)

SOCIAL SCIENCES & PUBLIC POLICY (POSTGRADUATE)

Programme	Duration	Intake	2022 tuition fees \$NZ	2023 tuition fees \$NZ (indicative only)
Postgraduate Certificate in Arts	6 months	Feb/Jul	16,200 (full tuition fee)	16,500 (full tuition fee)
Postgraduate Certificate in Human Rights	6 months	Feb	17,200 (full tuition fee)	17,500 (full tuition fee)
Postgraduate Diploma in Criminology and Criminal Justice	1 year	Feb	34,100 (full tuition fee)	34,800 (full tuition fee)
Postgraduate Diploma in Human Rights	1 year	Feb	34,400 (full tuition fee)	35,100 (full tuition fee)
Master of Arts in Psychology	2 years	Feb/Jul	32,400 (for one year (120 points) only)	33,000 (for one year (120 points) only)
Master of Criminology and Criminal Justice	1½ years	Feb	34,100 (for one year (120 points) only)	34,800 (for one year (120 points) only)
Master of Human Rights	1 year	Jan	51,600 (full tuition fee)	52,600 (full tuition fee)

All fees above are in New Zealand dollars and include GST. Tuition fees are subject to change and are reviewed annually. AUT reserves the right to change these published fees before enrolment to reflect any changes in government or university policy. If you’re taking courses as part of your qualification in the following academic year, you may be subject to a price increase for those courses.

MĀORI AND INDIGENOUS DEVELOPMENT

If you’re interested in learning more about Māori language and culture, Te Ara Poutama (AUT’s Faculty of Māori and Indigenous Development) offers a range of courses in Māori development, language revitalisation, Māori media and te reo Māori (the Māori language).

To find out more visit aut.ac.nz/tap

“I’ve enjoyed the academic ecology at AUT with its learning resources, professional supervision, and workshops and seminars for postgraduate students. What I would say to future students or researchers is, ‘If you want a memorable and meaningful experience, look no further – AUT is for you’. Auckland is a great city for international students. Who doesn’t want to study in the best city in the world for quality of life? Auckland has beautiful beaches for you to lie on, a variety of food for you to taste and dozens of cultural festivals for you to immerse yourself into.”

Anh Dinh
Vietnam
Doctor of Philosophy candidate – Language and Culture



DESIGN & CREATIVE TECHNOLOGIES

At AUT's Faculty of Design and Creative Technologies collaboration and partnership are at the heart of everything we do, and we're connected to an extraordinary range of organisations worldwide. Our teaching and research staff are among the best in New Zealand and internationally, and our outstanding facilities include an industry-standard screen and TV studio, a radio station, digital textile machines, an art gallery and one of only two motion capture facilities in New Zealand.

Our programmes are world-class. University rankings organisation QS places us in the top 150 in the world for both our art and design, and communication studies programmes. Engineering New Zealand recognises our Bachelor of Engineering (Honours) as meeting the Washington Accord and the Bachelor of Engineering Technology as meeting the Sydney Accord. IT Professionals NZ (ITPNZ) also recognises our Bachelor of Computer and Information Sciences as meeting the Seoul Accord.

ARCHITECTURE & BUILT ENVIRONMENT (UNDERGRADUATE)

Programme	Duration	Intake	2022 tuition fees \$NZ	2023 tuition fees \$NZ (indicative only)
Bachelor of Architecture and Future Environments	3 years	Feb	40,000 (for one year (120 points) only)	41,600 (for one year (120 points) only)
Bachelor of Construction <ul style="list-style-type: none">• Construction Management• Quantity Surveying	3 years	Feb	40,000 (for one year (120 points) only)	41,600 (for one year (120 points) only)
Bachelor of Design¹ in Spatial Design	3 years	Feb	36,200 (for one year (120 points) only)	37,600 (for one year (120 points) only)
Bachelor of Engineering (Honours) <ul style="list-style-type: none">• Architectural Engineering• Construction Engineering	4 years	Feb/Jul	42,400 (for one year (120 points) only)	42,800 (for one year (120 points) only)
Graduate Diploma in Architecture	1 year	Feb	40,000 (full tuition fee)	41,600 (full tuition fee)

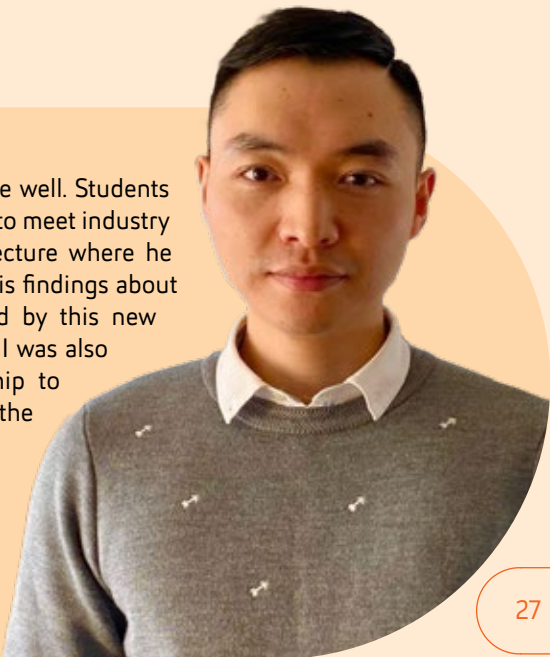
1. From 2023, the Bachelor of Design will be replaced by Te Tohu Paetahi mō te Hoahoa – Bachelor of Design.

ARCHITECTURE & BUILT ENVIRONMENT (POSTGRADUATE)

Programme	Duration	Intake	2022 tuition fees \$NZ	2023 tuition fees \$NZ (indicative only)
Master of Architecture (Professional)	2 years	Feb	40,000 (for one year (120 points) only)	41,600 (for one year (120 points) only)
Master of Construction Management	1 year	Feb/Jul	42,900 (full tuition fee)	44,200 (full tuition fee)
Master of Engineering Project Management	1 year	Feb/Jul	42,100 (full tuition fee)	42,900 (full tuition fee)

"I believe AUT combines academic studies and industry knowledge well. Students learn not only about the theory, but can also apply their knowledge to meet industry requirements. In my first semester, my supervisor organised a lecture where he invited his friend, an experienced software architect, who shared his findings about an innovative approach to software architecture. I was attracted by this new approach and was the chosen candidate for this research project. I was also fortunate to receive a \$25,000 Callaghan Innovation Scholarship to support my research, and have since been hired by the company the software architect works for."

Xingbin (Rosman) Cheng
China
Mobile Application Developer, Datamars Ltd, Auckland
Master of Computer and Information Sciences



ART & DESIGN (UNDERGRADUATE)

Programme	Duration	Intake	2022 tuition fees \$NZ	2023 tuition fees \$NZ (indicative only)
Certificate in Science and Technology	1 year	Feb/Jul	32,300 (full tuition fee)	32,800 (full tuition fee)
Diploma in Arts ¹	1 year	Feb/Jul	30,600 (full tuition fee)	31,100 (full tuition fee)
Bachelor of Design ² <ul style="list-style-type: none">• Communication Design• Digital Design• Fashion Design• Industrial Design• Interaction Design• Spatial Design	3 years	Feb	36,200 (for one year (120 points) only)	37,600 (for one year (120 points) only)
Bachelor of Visual Arts ³	3 years	Feb	35,900 (for one year (120 points) only)	37,300 (for one year (120 points) only)

1. From 2023, the new Titohu mō te Hoahoa – Diploma in Design will also be offered. It can serve as a pathway into the design degree.
2. From 2023, the Bachelor of Design will be replaced by Te Tohu Paetahi mō te Hoahoa – Bachelor of Design.
3. From 2023, the Bachelor of Visual Arts will be replaced by Te Tohu Paetahi o Toi Ataata – Bachelor of Visual Arts.

ART & DESIGN (POSTGRADUATE)

Programme	Duration	Intake	2022 tuition fees \$NZ	2023 tuition fees \$NZ (indicative only)
Master of Design	1½ years	Feb	39,200 (for one year (120 points) only)	40,800 (for one year (120 points) only)
Master of Visual Arts	1½ years	Feb	39,200 (for one year (120 points) only)	40,800 (for one year (120 points) only)

COMMUNICATION STUDIES (UNDERGRADUATE)

Programme	Duration	Intake	2022 tuition fees \$NZ	2023 tuition fees \$NZ (indicative only)
Diploma in Arts	1 year	Feb/Jul	30,600 (full tuition fee)	31,100 (full tuition fee)
Bachelor of Communication Studies <ul style="list-style-type: none">• Advertising and Brand Creativity• Digital Communication• Journalism• Public Relations• Radio and Audio Media• Screen Production	3 years	Feb/Jul	31,500 (for one year (120 points) only)	32,400 (for one year (120 points) only)

COMMUNICATION STUDIES (POSTGRADUATE)

Programme	Duration	Intake	2022 tuition fees \$NZ	2023 tuition fees \$NZ (indicative only)
Postgraduate Certificate in Communication Studies	6 months	Feb/Jul	17,750 (full tuition fee)	18,000 (full tuition fee)
Postgraduate Diploma in Communication Studies <ul style="list-style-type: none">• Digital Media• Journalism• Public Relations• Standard pathway (no specialisation)	1 year	Feb/Jul	35,100 (full tuition fee)	36,200 (full tuition fee)
Master of Communication Studies	1½ years	Feb/Jul	35,100 (for one year (120 points) only)	36,200 (for one year (120 points) only)

CREATIVE TECHNOLOGIES (UNDERGRADUATE)

Programme	Duration	Intake	2022 tuition fees \$NZ	2023 tuition fees \$NZ (indicative only)
Bachelor of Creative Technologies	3 years	Feb	35,900 (for one year (120 points) only)	37,300 (for one year (120 points) only)

CREATIVE TECHNOLOGIES (POSTGRADUATE)

Programme	Duration	Intake	2022 tuition fees \$NZ	2023 tuition fees \$NZ (indicative only)
Postgraduate Certificate in Creative Technologies	6 months	Feb	18,500 (full tuition fee)	19,200 (full tuition fee)
Master of Creative Technologies	1½ years	Feb	37,000 (for one year (120 points) only)	38,500 (for one year (120 points) only)

“AUT is well-known for its friendly and international staff, and for offering a student-focused environment. The class sizes are small, so the lecturer can pay attention to each and every student. The lecturers are from all around the world, which makes the environment friendlier and more diverse. I also loved the amount of group projects we got to work on at AUT. This showed that AUT has a more practical approach towards engineering because as an engineer you often work in teams that also include architects and other professionals.”

Divya Kataria
India
Development Engineer, Watercare, Auckland
Bachelor of Engineering (Honours) in Construction Engineering
with First Class Honours



ENGINEERING, COMPUTER & MATHEMATICAL SCIENCES (UNDERGRADUATE)

Programme	Duration	Intake	2022 tuition fees \$NZ	2023 tuition fees \$NZ (indicative only)
Certificate in Science and Technology	1 year	Feb/Jul	32,300 (full tuition fee)	32,800 (full tuition fee)
Bachelor of Computer and Information Sciences <ul style="list-style-type: none">Data ScienceDigital ServicesNetworks and CybersecuritySoftware Development	3 years	Feb/Jul	35,200 (for one year (120 points) only)	36,100 (for one year (120 points) only)
Bachelor of Engineering (Honours) <ul style="list-style-type: none">Architectural EngineeringConstruction EngineeringElectrical and Electronic EngineeringMechanical EngineeringMechatronics EngineeringSoftware Engineering	4 years	Feb/Jul	42,400 (for one year (120 points) only)	42,800 (for one year (120 points) only)
Bachelor of Engineering Technology <ul style="list-style-type: none">Electrical EngineeringElectronic EngineeringMechanical Engineering	3 years	Feb/Jul	43,300 (for one year (120 points) only)	43,700 (for one year (120 points) only)
Bachelor of Science in Computer Science ¹	3 years	Feb/Jul	35,800 (for one year (120 points) only)	36,500 (for one year (120 points) only)
Graduate Certificate in Computer and Information Sciences	6 months	Feb/Jul	17,600 (full tuition fee)	18,000 (full tuition fee)
Graduate Certificate in Science	6 months	Feb/Jul	17,900 (full tuition fee)	18,300 (full tuition fee)
Graduate Diploma in Computer and Information Sciences	1 year	Feb/Jul	35,200 (full tuition fee)	36,100 (full tuition fee)
Graduate Diploma in Science	1 year	Feb/Jul	35,800 (full tuition fee)	36,500 (full tuition fee)

1. From 2023, analytics and mathematics are also expected to be offered as study options.



“A good university is a great place to build strong relationships with your lecturers and classmates. Through my studies, I built friendships with people from all over the world who are now in different communications roles and companies. When I first came to AUT I didn’t have a specialisation and took a wide variety of classes. For the sake of curiosity I took my first PR class, and was so impressed by the breadth of knowledge of our lecturer; her charisma and her wit. I found her inspiring and then switched all my courses to PR after that.”

Sharon Lee
Hong Kong
Senior Account Executive, Botica Butler Raudon Public Relations,
Auckland
Postgraduate Diploma in Communication Studies

ENGINEERING, COMPUTER & MATHEMATICAL SCIENCES (POSTGRADUATE)

Programme	Duration	Intake	2022 tuition fees \$NZ	2023 tuition fees \$NZ (indicative only)
Postgraduate Certificate in Computer and Information Sciences	6 months	Feb/Jul	19,400 (full tuition fee)	20,000 (full tuition fee)
Postgraduate Certificate in Engineering	6 months	Feb/Jul	21,000 (full tuition fee)	21,400 (full tuition fee)
Postgraduate Certificate in Science	6 months	Feb/Jul	19,300 (full tuition fee)	19,800 (full tuition fee)
Postgraduate Diploma in Computer and Information Sciences	1 year	Feb/Jul	38,800 (full tuition fee)	40,000 (full tuition fee)
Postgraduate Diploma in Engineering	1 year	Feb/Jul	42,100 (full tuition fee)	42,900 (full tuition fee)
Postgraduate Diploma in Science	1 year	Feb/Jul	38,600 (full tuition fee)	39,600 (full tuition fee)
Master of Analytics	1½ years	Feb/Jul	38,800 (for one year (120 points) only)	40,000 (for one year (120 points) only)
Master of Computer and Information Sciences	1½ years	Feb/Jul	38,800 (for one year (120 points) only)	40,000 (for one year (120 points) only)
Master of Construction Management	1 year	Feb/Jul	42,900 (full tuition fee)	44,200 (full tuition fee)
Master of Engineering	1-1½ years	Feb/Jul	42,100 (for one year (120 points) only)	42,900 (for one year (120 points) only)
Master of Engineering Project Management	1 year	Feb/Jul	42,100 (full tuition fee)	42,900 (full tuition fee)
Master of Information Security and Digital Forensics	1½ years	Feb/Jul	38,500 (for one year (120 points) only)	39,300 (for one year (120 points) only)
Master of IT Project Management	1 year	Feb/Jul	39,200 (full tuition fee)	40,000 (for one year (120 points) only)
Master of Science	1 year	Feb/Jul	57,900 (full tuition fee)	59,400 (full tuition fee)

All fees above are in New Zealand dollars and include GST. Tuition fees are subject to change and are reviewed annually. AUT reserves the right to change these published fees before enrolment to reflect any changes in government or university policy. If you’re taking courses as part of your qualification in the following academic year, you may be subject to a price increase for those courses.

HEALTH & ENVIRONMENTAL SCIENCES

AUT's Faculty of Health and Environmental Sciences offers world-class programmes and research across the disciplines of health, sport and science. We're New Zealand's largest health education provider, and across all of our programmes there's an emphasis on industry connections and workplace experience. Depending on your programme you could treat real patients in one of our on-campus clinics, get clinical experience in a hospital or other health organisation, collaborate on scientific research with one of our industry partners, or work with elite athletes at AUT Millennium, our world-class sport research and performance facility.

Our programmes are well regarded by employers and highly rated for their quality. University rankings organisation QS has ranked us 27th in the world for our sports programmes and in the top 150 globally for nursing, and Times Higher Education places our clinical and health programmes in the top 101-125 in the world. The Shanghai Ranking (Academic Ranking of World Universities) also ranks us first in New Zealand and 39th in the world for sport, in the top 150 globally for clinical medicine and for public health, and in the world's top 300 for nursing.



HEALTH SCIENCES (UNDERGRADUATE)

Programme	Duration	Intake	2022 tuition fees \$NZ	2023 tuition fees \$NZ (indicative only)
Diploma in Applied Science	1 year	Feb/Jul	34,600 (full tuition fee)	35,200 (full tuition fee)
Diploma in Paramedic Science	1 year	Feb/Jul	39,200 (full tuition fee)	39,900 (full tuition fee)
Bachelor of Health Science¹ <ul style="list-style-type: none"> • Case Management² • Counselling • Health Management² • Paramedicine • Perioperative Practice • Psychology • Public and Environmental Health² • Individual Pathway² 	3 years	Feb/Jul	35,200 ³ (for one year (120 points) only)	35,900 (for one year (120 points) only)
Bachelor of Health Science (Midwifery)¹	4 years	Feb	39,000 (for one year (120 points) only)	39,800 (for one year (120 points) only)
Bachelor of Health Science (Nursing)¹	3 years	Feb/Jul	36,700 (for one year (120 points) only)	37,400 (for one year (120 points) only)
Bachelor of Health Science (Occupational Therapy)¹	3 years	Feb	35,200 (for one year (120 points) only)	35,900 (for one year (120 points) only)
Bachelor of Health Science (Oral Health)¹	3 years	Feb	43,400 (for one year (120 points) only)	44,300 (for one year (120 points) only)
Bachelor of Health Science (Physiotherapy)¹	4 years	Feb	39,000 (for one year (120 points) only)	39,800 (for one year (120 points) only)
Bachelor of Health Science (Podiatry)¹	3 years	Feb	39,000 (for one year (120 points) only)	39,800 (for one year (120 points) only)
Graduate Certificate in Health Science	6 months	Feb/Jul	17,800 (full tuition fee)	18,200 (full tuition fee)
Graduate Diploma in Health Science	1 year	Feb/Jul	35,500 (full tuition fee)	36,200 (full tuition fee)
Graduate Diploma in Psychotherapy Studies	1 year	Feb	35,500 (full tuition fee)	36,200 (full tuition fee)

1. All applicants to undergraduate health science degrees are offered a place in the Bachelor of Health Science without a major. After the first semester, students can apply for a place in specific majors or programme pathways for the rest of their studies

2. These majors are expected to undergo exciting changes for 2023. Visit aut.ac.nz/healthsciences

3. Paramedicine has a higher fee of NZD\$39,000 for one year (120 points).

HEALTH SCIENCES (POSTGRADUATE)

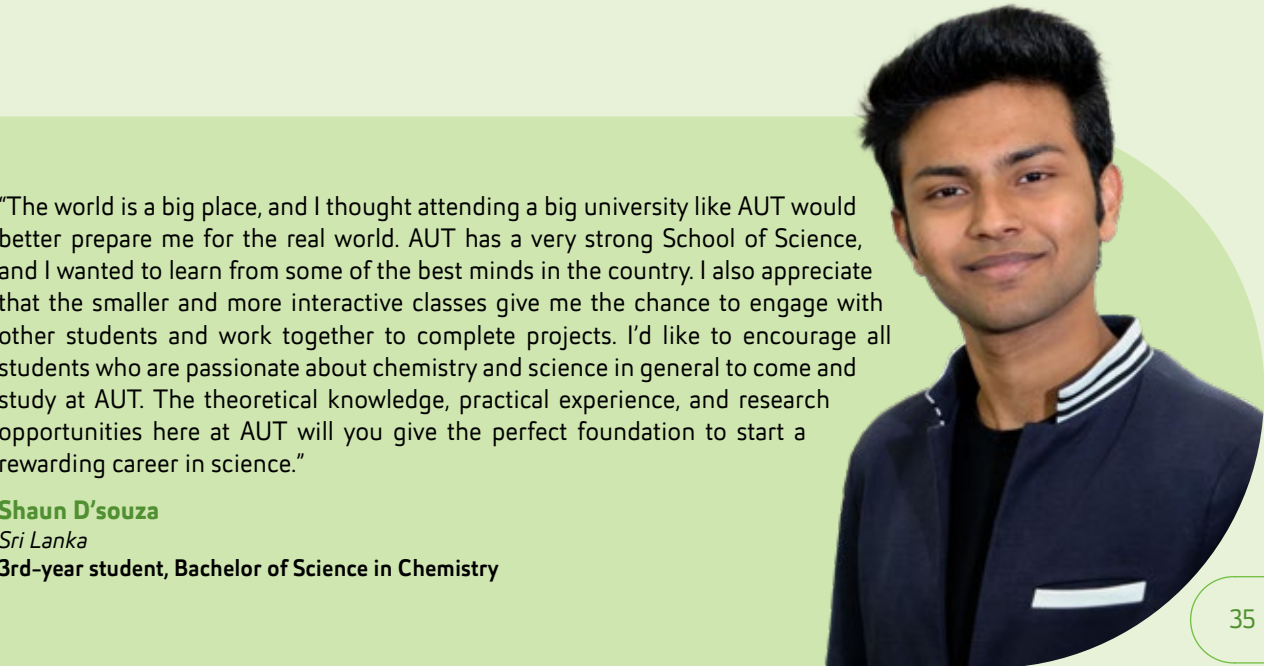
Programme	Duration	Intake	2022 tuition fees \$NZ	2023 tuition fees \$NZ (indicative only)
Postgraduate Certificate in Advanced Nursing Practice	6 months	Feb/Jul	19,600 (full tuition fee)	20,200 (full tuition fee)
Postgraduate Certificate in Disaster Risk Management and Development	6 months	Feb/Jul	19,600 (full tuition fee)	20,200 (full tuition fee)
Postgraduate Certificate in Health Science	6 months	Feb/Jul	19,600 (full tuition fee)	20,200 (full tuition fee)
Postgraduate Certificate in Public Health	6 months	Feb	19,600 (full tuition fee)	20,200 (full tuition fee)
Postgraduate Diploma in Counselling Psychology	1 year	Feb	39,100 (full tuition fee)	40,300 (full tuition fee)
Postgraduate Diploma in Disaster Risk Management and Development	1 year	Feb/Jul	39,100 (full tuition fee)	40,300 (full tuition fee)
Postgraduate Diploma in Health Science <ul style="list-style-type: none">• Acupuncture• Advanced Nursing Practice• Child Health – Health Care Ethics• Health Professional Education• Leadership and Management• Māori Health• Mental Health and Addictions• Midwifery• Musculoskeletal Physiotherapy• Older Adult Health and Wellness• Physical Activity and Nutrition• Podiatry• Rehabilitation• Violence and Trauma Studies	1 year	Feb/Jul	39,100 (full tuition fee)	40,300 (full tuition fee)
Postgraduate Diploma in Public Health	1 year	Feb/Jul	39,100 (full tuition fee)	40,300 (full tuition fee)
Postgraduate Diploma in Registered Nurse Prescribing	1 year	Feb/Jul	39,100 (full tuition fee)	40,300 (full tuition fee)

Programme	Duration	Intake	2022 tuition fees \$NZ	2023 tuition fees \$NZ (indicative only)
Postgraduate Diploma in Rehabilitation Psychology	1 year	Not offered in 2022. Check website for 2023	39,100 (full tuition fee)	40,300 (full tuition fee)
Master of Disaster Risk Management and Development	1½ years	Feb/Jul	39,100 (for one year (120 points) only)	40,300 (for one year (120 points) only)
Master of Health Practice <ul style="list-style-type: none">• Acupuncture• Child Health• Māori Health• Mental Health and Addictions• Midwifery• Musculoskeletal Physiotherapy• Nursing• Paramedicine• Podiatry• Rehabilitation• Violence and Trauma Studies	1½ years	Feb/Jul	39,100 (for one year (120 points) only)	40,300 (for one year (120 points) only)
Master of Health Science <ul style="list-style-type: none">• Advanced Nursing Practice• Podiatry• Psychology	2 years	Feb/Jul	39,100 (for one year (120 points) only)	40,300 (for one year (120 points) only)
Master of Nursing Science	2 years	Feb	39,700 (for one year (120 points) only)	40,900 (for one year (120 points) only)
Master of Physiotherapy Practice	2 years	Jul	39,100 (for one year (120 points) only)	40,300 (for one year (120 points) only)
Master of Psychotherapy	2 years	Feb	44,900 (for one year (120 points) only)	46,200 (for one year (120 points) only)
Master of Public Health	2 years	Feb/Jul	39,100 (for one year (120 points) only)	40,300 (for one year (120 points) only)



“I chose AUT because reading about the physiotherapy programme on the AUT website really drew my attention, and AUT seemed very welcoming and inclusive. That was important to me as an international student. At AUT, there are many opportunities to build relationships with people and support services in place to help you in times of need. AUT always strives to be inclusive and ensures that every student and staff member feels culturally, socially, mentally and physically safe. Most services are free or low-cost for students, which is really helpful. The lecturers are also always willing to give and receive feedback, and are never opposed to positive change.”

Sara Al-Harrasi
Oman
3rd-year student, Bachelor of Health Science (Physiotherapy)



“The world is a big place, and I thought attending a big university like AUT would better prepare me for the real world. AUT has a very strong School of Science, and I wanted to learn from some of the best minds in the country. I also appreciate that the smaller and more interactive classes give me the chance to engage with other students and work together to complete projects. I'd like to encourage all students who are passionate about chemistry and science in general to come and study at AUT. The theoretical knowledge, practical experience, and research opportunities here at AUT will you give the perfect foundation to start a rewarding career in science.”

Shaun D'souza
Sri Lanka
3rd-year student, Bachelor of Science in Chemistry

SCIENCE (UNDERGRADUATE)

Programme	Duration	Intake	2022 tuition fees \$NZ	2023 tuition fees \$NZ (indicative only)
Certificate in Applied Science	1 year	Feb/Jul	34,600 (full tuition fee)	35,200 (full tuition fee)
Diploma in Applied Science	1 year	Feb/Jul	34,600 (full tuition fee)	35,200 (full tuition fee)
Bachelor of Medical Laboratory Science	4 years	Feb	39,600 (for one year (120 points) only)	40,400 (for one year (120 points) only)
Bachelor of Science ¹ <ul style="list-style-type: none">• Applied Conservation• Biomedical Science• Chemistry• Environmental Sciences• Food Safety• Food Science• Geoscience• Geospatial Science• Health Protection• Marine Biology• Microbiology• Molecular Genetics• Psychology	3 years	Feb/Jul	36,200 (for one year (120 points) only)	36,900 (for one year (120 points) only)
Graduate Certificate in Science	6 months	Feb/Jul	18,100 (full tuition fee)	18,500 (full tuition fee)
Graduate Diploma in Science	1 year	Feb/Jul	36,200 (full tuition fee)	36,900 (full tuition fee)

1. This programme is expected to undergo exciting changes for 2023. Visit aut.ac.nz/sciences

SCIENCE (POSTGRADUATE)

Programme	Duration	Intake	2022 tuition fees \$NZ	2023 tuition fees \$NZ (indicative only)
Postgraduate Certificate in Medical Laboratory Science	6 months	Feb/Jul	20,300 (full tuition fee)	20,800 (full tuition fee)
Postgraduate Certificate in Science	6 months	Feb/Jul	19,500 (full tuition fee)	20,000 (full tuition fee)
Postgraduate Diploma in Medical Laboratory Science	1 year	Feb/Jul	40,600 (full tuition fee)	41,600 (full tuition fee)
Postgraduate Diploma in Science	1 year	Feb/Jul	39,000 (full tuition fee)	40,000 (full tuition fee)
Master of Medical Laboratory Science	2 years	Feb/Jul	40,600 (for one year (120 points) only)	41,600 (for one year (120 points) only)
Master of Science	1 year	Feb/Jul	58,500 (full tuition fee)	60,000 (full tuition fee)
Master of Science (Research)	2 years	Feb/Jul	39,000 (for one year (120 points) only)	40,000 (for one year (120 points) only)

SPORT & RECREATION (UNDERGRADUATE)

Programme	Duration	Intake	2022 tuition fees \$NZ	2023 tuition fees \$NZ (indicative only)
Certificate in Sport and Recreation	6 months	Feb	15,300 (full tuition fee)	15,600 (full tuition fee)
Bachelor of Sport and Recreation ¹ <ul style="list-style-type: none">• Coaching• Exercise Science and Nutrition• Health and Physical Education• Management• Outdoor Education• Sport and Exercise Science• Standard Pathway	3 years	Feb/Jul	35,900 (for one year (120 points) only)	37,000 (for one year (120 points) only)
Graduate Certificate in Sport and Exercise	6 months	Feb/Jul	17,950 (full tuition fee)	18,400 (full tuition fee)
Graduate Diploma in Sport and Exercise	1 year	Feb/Jul	35,900 (full tuition fee)	37,000 (full tuition fee)

1. This programme is expected to undergo exciting changes for 2023. Visit aut.ac.nz/sportrecreation

SPORT & RECREATION (POSTGRADUATE)

Programme	Duration	Intake	2022 tuition fees \$NZ	2023 tuition fees \$NZ (indicative only)
Postgraduate Certificate in Sport, Exercise and Health	6 months	Feb/Jul	19,600 (full tuition fee)	20,200 (full tuition fee)
Master of Sport, Exercise and Health	1 year	Feb/Jul	58,650 (full tuition fee)	60,450 (full tuition fee)
Master of Business in Sport Leadership and Management	1½ years	Feb/Jul	33,300 (for one year (120 points) only)	34,000 (for one year (120 points) only)

All fees above are in New Zealand dollars and include GST. Tuition fees are subject to change and are reviewed annually. AUT reserves the right to change these published fees before enrolment to reflect any changes in government or university policy. If you're taking courses as part of your qualification in the following academic year, you may be subject to a price increase for those courses.

"I came to AUT for my doctoral supervisors. I knew what I wanted my PhD topic to be, and was then looking for the right supervisors to guide me throughout my doctoral degree. I found them at AUT. I love the people here! I've had the dream team of supervisors, and I think anyone would be lucky to get to work with either of them. I've had a great experience studying at AUT, despite the disruptions of the COVID-19 global pandemic. Throughout my studies, I've made great friends, been given the opportunity to help with other people's research and also got to do some coaching in the on-campus gym."

Alyssa-Joy Spence
Canada
Doctor of Philosophy candidate – Sport & Recreation



DOCTORATES AND GRADUATE RESEARCH PROGRAMMES

AUT leads Australasia in global research impact, with more than 60 research centres and institutes delivering leading research – from artificial intelligence and robotics to ecology and public health. This makes AUT the right choice for your graduate research programme.

You can study a Doctor of Philosophy (PhD) or Master of Philosophy in any faculty.

GRADUATE RESEARCH PROGRAMMES

Programme	Duration	Intake	2022 tuition fees \$NZ	2023 tuition fees \$NZ (indicative only)
Master of Philosophy	1 year	Feb/May/Jul/ Oct	39,200 (full tuition fee)	39,900 (for one year (120 points) only)
Doctor of Philosophy (based in NZ)	3 years	Feb/May/Jul/ Oct	7,079 (for one year (120 points) only)	TBC

All fees above are in New Zealand dollars and include GST. Tuition fees are subject to change and are reviewed annually. AUT reserves the right to change these published fees before enrolment to reflect any changes in government or university policy. If you're taking courses as part of your qualification in the following academic year, you may be subject to a price increase for those courses.

BENEFITS OF A NEW ZEALAND PHD

Complete your PhD in New Zealand and enjoy the following benefits:

- Pay the same fees as New Zealanders (if you're based in New Zealand)
- As a PhD student you have favourable work rights under the terms of your student visa
- After completing your PhD, you can apply for a post-study work visa through Immigration New Zealand to search for employment.
- Your dependent children are classified as domestic students and can attend New Zealand's primary and secondary schools at the same subsidised rate as New Zealand children.

APPLYING FOR A GRADUATE RESEARCH PROGRAMME

If you are planning to enrol in a Master of Philosophy (MPhil) or Doctor of Philosophy (PhD) at AUT, email the Graduate Research School at doctoral.and.mphil.admissions@aut.ac.nz

EXPLORE OUR RESEARCH EXPERTISE

AUT's academic supervisors are recognised world-class researchers who have the expert knowledge to guide you throughout your studies. To find out more visit academics.aut.ac.nz

"I'd highly recommend the PhD to prospective students because AUT provides an excellent learning environment for students who want to build their future in academia. AUT has cutting-edge research facilities and well-established academics, which enables doctoral students to undertake world-class research. I've also enjoyed the opportunity to teach undergraduate and master's degree students at AUT. Not all PhD students in Australasia get the chance to be involved in teaching at university level, but AUT encourages its PhD students to engage in teaching and other academic services. This gives us an edge when we start our career in academia."

Nafiz Ul Fahad
Bangladesh
Doctor of Philosophy candidate – Business



ONLINE PROGRAMMES FOR OFFSHORE INTERNATIONAL STUDENTS

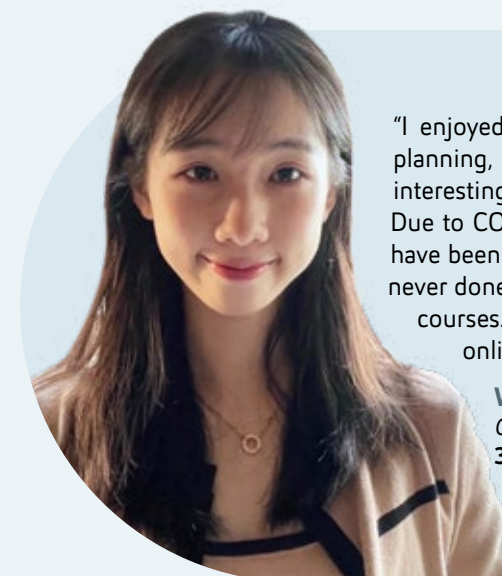
AUT's focus is on providing the best on-campus and off-campus learning for 2022 and beyond. If you're an international student currently offshore in your home country and unable to study on campus due to border restrictions caused by the COVID-19 pandemic, there are some AUT programmes you can study online with us.

You can progress your qualification now without needing a student visa to study from your home country. You can then safely transition to study with us on campus in the near future once the borders are open, or if you become eligible for any new border exception cohorts announced by the New Zealand government.

To find out more visit aut.ac.nz/online-international

Alternatively, we have a wide range of partnerships globally that may enable you to study an AUT qualification in your home country. To find out more about this option email international@aut.ac.nz

1. If you're interested in studying online, you should check if your respective government will recognise the proposed qualification if a component is completed online.
2. If you're currently offshore and your chosen programme is not listed, we encourage you to apply for study in the next possible intake.



"I enjoyed everything about this degree, from the courses about leadership to event planning, finance, tourism, business or hotel management. The courses were all very interesting, and AUT has an excellent reputation both in New Zealand and internationally. Due to COVID-19, I couldn't go back to New Zealand for my second and third year, and have been taking online classes for my degree. At first, I was very flustered because I had never done an online class before. However, with help from AUT, I began to master online courses. I also found that the study atmosphere and teamwork is still very strong in online learning."

Wanting Huang

China

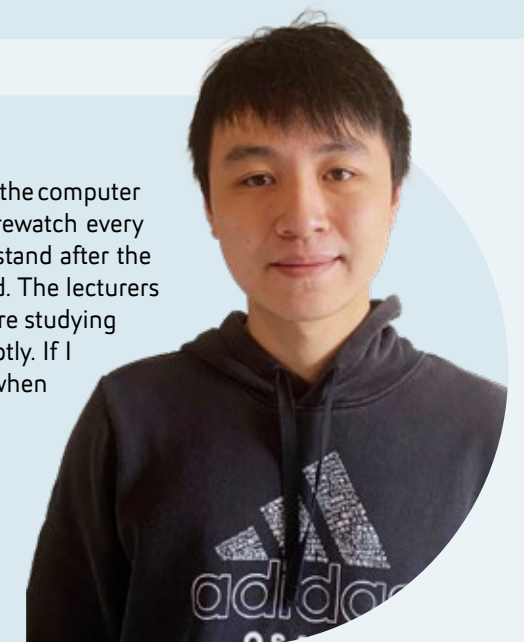
3rd-year student, Bachelor of International Hospitality Management

"AUT's computing degree covers all the necessary skills to start a career in the computer science industry. What I like most about online learning is that I can rewatch every course video whenever I want. If there is anything I didn't quite understand after the lecture, I can watch the video again to catch up on anything I've missed. The lecturers and teaching assistants have been very supportive of those of us who are studying online from overseas. They always provide feedback and advice promptly. If I have any questions, I just send them an email and they're very patient when explaining things to me."

Jackie Tin Lok Lai

Hong Kong

2nd-year student, Bachelor of Computer and Information Sciences in Software Development



STUDY ABROAD PROGRAMME

Come to AUT as a Study Abroad student for a semester or a year, and you can choose from subjects across all of our study areas. You will meet the subject requirements of your home university, while exploring Auckland and New Zealand, and gain a once-in-a-lifetime international experience.

You can customise your semester by choosing to do a full-time semester of courses, or doing a mix of courses and a part-time internship at the same time. You can start in February or July.

As a Study Abroad student you will:

- Receive a warm, distinctly New Zealand welcome onto our campus
- Be supported in adapting to life and study in a new environment
- Have plenty of opportunities to make new friends, learn about New Zealand's unique culture and discover the superb natural scenery New Zealand is famous for

Cost for the Study Abroad programme in 2022

The tuition fee for a full-time semester of four courses is NZD\$12,800.

You will also need to pay an enrolment fee, student services fee and insurance. If you opt for the internship study option, there will be a placement fee.

To find out more visit autstudyabroad.info

"I came to AUT to study primary education as part of the Study Abroad programme. My advice to other students is to go to New Zealand and then, when you're there, take every opportunity to travel, meet new people and learn everything you can because it will change your life. The combination of New Zealand and AUT means that you get to experience everything New Zealand offers in terms of nature and culture, with the support of AUT. This experience has developed me as a person and allowed me to bring new perspectives home."

Marshall Murphy
USA
University of Vermont, USA



ENTRY REQUIREMENTS

As an international student, you will need to meet the academic entry requirements for your chosen programme. Academic requirements are based on achievement in your previous studies. Alongside this, you will also need to meet any programme-specific requirements and the minimum English language requirements (more details on this on page 50).

To find out more visit aut.ac.nz/int/entryrequirements

Accepted qualifications from different countries

The table below outlines the qualification from your home country you can use to apply for admission to an AUT bachelor's degree or diploma.

If you're an international student currently studying at a secondary school in New Zealand you will need to meet University entrance (UE). You can find out more about this at aut.ac.nz/universityentrance

Diploma entry requirements Equivalent to New Zealand Year 12	Bachelor's degree entry requirements Equivalent to New Zealand Year 13
AUSTRALIA	Completion of year 12 and an Australian Tertiary Admission Rank (ATAR) score of 69.6, or equivalent
BANGLADESH	One year of successful study towards an undergraduate degree at a recognised institute
BOTSWANA	Completion of three-year diploma from an affiliated institute of the University of Botswana with good grades
BRAZIL	One year of successful study towards an undergraduate degree at a recognised institute
CANADA	Grade 12 certificate <ul style="list-style-type: none">Quebec: High School graduation diploma with minimum average of 60% across six subjects, including English at Grade 12Ontario: Secondary School diploma with a minimum overall average grade of 65%General: High School graduation diploma from all other provinces will be assessed on a case-by-case basis
CHINA	Year 3 certificate of graduation <ul style="list-style-type: none">Senior High School graduation plus one year of successful study at bachelor's level; orSenior High School graduation plus completion of a two-year diploma, with good grades, at a recognised university A Tier 1 score in the National University Entrance Examination (Gaokao) at a recognised institution (refer to aut.ac.nz/int/entryrequirements for details)
COLOMBIA	Successful completion of one year's tertiary study at a recognised institution
DENMARK	<ul style="list-style-type: none">Studentereksamen (upper secondary school leaving examination) orHøjere forberedelseksamen (hf) orHøjere handelseksamen (hxx) orHøjere teknisk eksamen (htx)

Diploma entry requirements Equivalent to New Zealand Year 12	Bachelor's degree entry requirements Equivalent to New Zealand Year 13
FIJI	Fiji school leaving certificate <ul style="list-style-type: none">Fiji form 7 certificate, aggregate over four subjects of 250 mark out of 400, with minimum of 50 in English; orCompletion of USP Foundation Year programme in either Arts, Business or Science with a grade average of 'B' or higher and no grade lower than 'C' in the eight required courses; orApplicants who have completed the South Pacific Form Seven Certificate (SPFSC) with a minimum of three B grades and grade 5 or better in PSSC English and grade 6 or better in PSSC mathematics
FRANCE	Diplome du Baccalaureat
GERMANY	Mittlere Reife/Realschulabschluss
GHANA	GCE: A minimum of three A-level grades, with one grade being at least 'C' or higher. A result in General Studies cannot be included
HONG KONG	HK Certificate of Education
INDIA	Higher secondary certificate (standard xii), minimum 60%
INDONESIA	SMU 7.0
JAPAN	Upper secondary school leaving
KENYA	Successful completion of the Kenya Certificate of Secondary Education with a 'B' average





Diploma entry requirements	Bachelor's degree entry requirements
Equivalent to New Zealand Year 12	Equivalent to New Zealand Year 13
KOREA	
High school diploma	A minimum of 250 in the Korean university examination
MALAYSIA	
<ul style="list-style-type: none">STPMChinese unified exams	<ul style="list-style-type: none">STPM with three principal passes; orUEC with a maximum of 20 points over five academic subjects; orSAM with an ATAR of 69.6; orCompletion of an Australian foundation programme will be consideredSuccessful completion of the Malaysian Matrikulation Certificate (Matrikulasi) with a cumulative minimum GPA of 2.5
MEXICO	
	One year of successful study towards an undergraduate degree at a recognised institute
NEPAL	
	Bachelor's degree with upper second division
NIGERIA	
	<ul style="list-style-type: none">Successful completion of advanced national technical certificate at a recognised tertiary institution; orAdvanced national commercial certificate at a recognised tertiary institution; orWest African General Certificate of Education (GCE) Advanced Level. A minimum of three A-Level subjects, with at least a 'C' grade or higher
NORWAY	
	Successful completion of Videregaende Skole
OMAN	
	<ul style="list-style-type: none">One year of successful study towards an undergraduate degree at a recognised institute; orSuccessful completion of a two-year diploma from a recognised institute with good passing grades
PAKISTAN	
	One year of successful study towards an undergraduate degree at a recognised institute

Diploma entry requirements	Bachelor's degree entry requirements
Equivalent to New Zealand Year 12	Equivalent to New Zealand Year 13
PAPUA NEW GUINEA	
	One year of successful study towards an undergraduate degree at a recognised institute
PHILIPPINES	
	One year of successful study towards an undergraduate degree at a recognised institute
RUSSIA	
<ul style="list-style-type: none">Certificate of secondary education; orCertificate of maturity	One year of successful study towards an undergraduate degree at a recognised institute
SAMOA	
	<ul style="list-style-type: none">South Pacific Form Seven Certificate (SPFSC) with a minimum of three 'B' grades in SPFSC, and a grade 5 or better in PSSC EnglishFoundation Certificates of the National University of Samoa. A completed Foundation Certificate in one of Arts, Commerce, Education, General, or Science (ie not Nursing) with a minimum overall performance of 65-69% (grade B3) and a minimum of 60-64% (grade C1) in HEN004 Foundation English
SAUDI ARABIA	
	<ul style="list-style-type: none">One year of successful study towards an undergraduate degree at a recognised institute; orSuccessful completion of a diploma at a recognised college of technology; orSuccessful completion of a junior health diploma at a recognised tertiary institution; orSuccessful completion of a higher technical institute diploma at a recognised tertiary institution
SINGAPORE	
GCE O levels in 4 subjects	GCE A levels – A minimum of three H2 passes at C grade
SOUTH AFRICA	
	Successful National Senior Certificate that states the applicant is eligible to enrol in a bachelor's degree at a South African university
SRI LANKA	
GCE O levels	GCE A levels with a minimum of three A-level grades, with one grade being at least 'C' or higher. A result in General Studies cannot be included





Diploma entry requirements	Bachelor's degree entry requirements
Equivalent to New Zealand Year 12	Equivalent to New Zealand Year 13
SWEDEN	
	Successful completion of Avgangsbetyg/Slutbetyg fran Gymnasieskola
TAIWAN	
Senior high school	<ul style="list-style-type: none">Successful completion of senior high school and a two-year junior college diplomaSuccessful completion of junior high school and a five-year junior college diploma; orOne year of successful study towards an undergraduate degree at a recognised institute
THAILAND	
Mathayom 6	Mathayom 6 with a GPA of 3.2 or higher
UAE	
70% or better in Tawajihya (secondary school certificate)	One year of successful study towards an undergraduate degree at a recognised institute
UGANDA	
	One year of successful study towards an undergraduate degree at a recognised institute
UK	
GCSE (higher grades)	A and AS Levels GCSE (considered on a case-by-case basis)
USA	
High school diploma	<ul style="list-style-type: none">High School Diploma plus SAT. SAT tests now require a minimum score of 1150; scores below this may be considered on a case-by-case basisHigh School Diploma plus a minimum ACT of 22; orCompletion of an Associate Degree in an academic stream from a recognised Community College
VIETNAM	
Universal graduation with a grade of 7 when out of 10, or 30 when out of 40	<ul style="list-style-type: none">One year of successful study towards an undergraduate degree at a recognised instituteComplete the National High School Graduation Examination with an overall pass; and a minimum GPA of 8/10 in Grade 12 as shown in the High School report

Diploma entry requirements	Bachelor's degree entry requirements
Equivalent to New Zealand Year 12	Equivalent to New Zealand Year 13
WORLDWIDE	
	<ul style="list-style-type: none">International Baccalaureate (IB) with successful completion of a minimum of 24 pointsCambridge International Examination – a minimum of 120 points on the UCAS Tariff¹ at A or AS level from any subjects which are broadly equivalent to the subjects in the NCEA approved subject list. Must include at least three subjects (excluding Thinking Skills) with grades D or above. Numeracy: A minimum grade of D in International General Certificate of Secondary Education (IGCSE) mathematics or any mathematics subject at AS or A level. Literacy: A minimum grade of E in English Language and/or English Literature subject at AS or A level.General Certificate of Education (GCE) with three A-levels including at least one C grade or better. A result in General Studies cannot be included among the 3 on which the application is basedA minimum of CCC scores (7 points) across the NCUK International Foundation Year (IFY)Acceptance of the NCUK English for Academic Purposes qualification as an alternative to meeting the English-language requirements, with a minimum of a C grade overall and no less than D grade in each component

1. UCAS (Universities and Colleges Admissions Services for the UK) Tariff = system which converts AS and A level grades into points.

Graduate certificates and graduate diplomas

You generally need to have completed an undergraduate qualification for entry to a graduate certificate or diploma. You can find specific entry requirements for your chosen programme on our website aut.ac.nz

Recognition of prior learning

Recognition of prior learning (RPL) is credit granted towards your AUT programme from previous tertiary studies or through life or work experience. If you have already completed some university study related to the AUT programme you want to apply for, you may be able to apply for recognition of prior learning and get cross-credits towards your AUT qualification. There is a cost to apply for recognition of prior learning. To find out more visit aut.ac.nz/rpl

Postgraduate programmes

Entry requirements for AUT postgraduate programmes vary. You can find specific entry requirements on the programme page for your chosen programme on our website aut.ac.nz

Minimum entry requirements are generally a successfully completed bachelor's degree in the same area of study from a recognised university. You may also be required to provide evidence of relevant work/research experience. If you're planning to undertake a thesis, a research proposal will also be required.



ENGLISH LANGUAGE REQUIREMENTS

All AUT programmes are taught and examined in English. If English is not your first language, you will need to show that you meet the minimum English language proficiency to complete your AUT qualification.

You can use your official results for one of the following English language tests to meet the English language requirements. Test results are valid for up to two years.

The standard English language entry requirements are set out on the following pages. Some AUT programmes have higher English language requirements than the ones below. Refer to the AUT website for English language requirements for your chosen programme.

To find out more visit aut.ac.nz/englishrequirements

IELTS (Academic)

IELTS is the preferred English test for AUT qualifications. Due to professional registration requirements, IELTS is also the required English test for most health science degrees.

The New Zealand Teaching Council has specific English language requirements for initial teacher education programmes.

Some programmes have higher requirements than the ones listed below.

Doctoral degrees

IELTS 6.5 overall with 7.0* in Writing and all other bands 6.0 or higher

*Engineering, Computer and Mathematical Sciences only require a 6.5 Writing Band

Other postgraduate programmes

IELTS 6.5 overall with all bands 6.0 or higher

Graduate diplomas, graduate certificates and conjoint programmes

IELTS 6.5 overall with all bands 6.0 or higher

Bachelor's degrees

IELTS 6.0 overall with all bands 5.5 or higher

Diplomas and certificates

Depending on the particular programme, either IELTS 6.0 overall with all bands 5.5 or higher, or 5.5 overall with all bands 5.0 or higher

Qualifications taught and assessed in English

You can use the official results of an academic qualification completed in a country where English is the main language:

- Must have been taught and assessed in English – evidence is required
- Must be at an appropriate level

International students at NZ secondary schools

If you're gaining University Entrance (UE) through NCEA, IB or CIE, you must meet the UE literacy requirements. You can't replace the literacy requirements with an English language test result such as IELTS. Some AUT programmes have language requirements higher than UE literacy.

Other recognised English language tests

Use the following table to see what you need to meet the English language requirements.

Test results are valid for up to two years. Other recognised tests of English language proficiency may be accepted on a case-by-case basis as agreed by AUT.

MINIMUM OVERALL SCORE					
Qualification	Minimum overall score				
IELTS	5.0	5.5	6.0	6.5	7.0
English New Zealand Pathway Assessment	–	Level 1	Level 2 (with no skill lower than Level 1)	Level 3 (with no skill lower than Level 2)	–
Cert EAS	C–	C/C+	B/B+	A	–
NZCEL	–	–	NZCEL 4 (Academic Endorsement)	NZCEL 5 (Academic Endorsement)	–
GIE ¹	C	C+	B	B+	A
TOEFL iBT ²	65	70	80	90	100
CAE	154	162	169	176	185
Pearson (PTE)	35	42	50	58	65
Christchurch College of English Language (CCEL)	–	–	CCEL EAP, Level 2 with a minimum C+	CCEL EAP, Level 2 with a minimum B+	–
LanguageCert International ESOL	–	–	C1 Expert IESOL (LRWS) PASS with no less than Pass in each skill	C1 Expert IESOL (LRWS) HIGH PASS with no less than Pass in each skill OR C2 Mastery IESOL (LRWS) PASS with no less than a Pass in each skill	–
Trinity ISE	–	–	ISE II with no less than Distinction in any band	ISE III with no less than Pass in any band	–

INDIVIDUAL SKILL/BAND SCORE					
Qualification	Individual skill/band score				
IELTS (R/L/S/W)	5.0	5.5	6.0	6.5	7.0
Cert EAS	Depends on the qualification you seek entry to. Please refer to the Academic Calendar. ³				
GIE ¹	C	C+	B	B+	A
TOEFL iBT (R/L/S/W) ²	15/15/17/18	15/15/18/20	19/19/20/22	20/20/20/24	24/24/23/27
CAE	154	162	169	176	185
Pearson (PTE)	35	42	50	58	65
Christchurch College of English Language (CCEL)	–	–	C+	B+	–

1. GIE can't be used to meet doctoral English language entry requirements.

2. Individual band scores for TOEFL iBT are indicative and variations of up to two points may be accepted, as long as the minimum overall score is achieved.

3. The AUT Academic Calendar contains AUT's official regulations for all programmes. Refer to aut.ac.nz/calendar

IMPROVE YOUR ENGLISH AT AUT INTERNATIONAL HOUSE

If you need to develop your English language skills before studying at AUT, we offer English preparation and university entrance courses. AUT International House is one of New Zealand's leading English language schools, offering a range of programmes designed for international students.

AUT International House is based at the AUT City Campus in the centre of Auckland. You can also study our English language courses online from your home country.

Our pathway programmes are suitable for students who have not gained direct entry to our undergraduate and postgraduate qualifications. Our small class sizes and excellent teachers will help you succeed in learning English. In addition to developing your English language skills, you also learn academic skills to help you in your future studies at university. International House runs various programmes to suit different English levels, including our GIE Academic Pathway programme.

GIE Academic Pathway

The GIE programme develops your English language skills and prepares you for entry into most AUT degree programmes (except for some health and education programmes).

Once you have this qualification you do not need to sit the IELTS exam to enter your AUT degree programme (except for some health programmes). You still need to meet the other academic entry requirements for the degree programme you apply for.

Course details:

- Full-time, 23 hours per week, 12-week academic preparation and study skills programme
- Offered online or AUT International House in Auckland
- Multiple intakes per year
- IELTS entry requirement: 5.5 overall with a minimum of 5.5 in Reading and Writing and 5.0 in Speaking and Listening

What you learn

In addition to developing your English language skills, you will also learn the academic skills to help you during future study.

You will develop skills and experience in:

- Reading and writing academic texts
- Critical thinking skills
- Managing academic vocabulary
- Working in groups to research a project
- Making a spoken presentation
- Taking a formal final assessment

You need to be at least 18 years to enrol.

Contact us to find out more

Email: inhouse@aut.ac.nz

Phone: +64 9 921 9630

Website: aut.ac.nz/ih

"I would definitely recommend studying at AUT International House, mainly for the proficiency of the teaching staff here. Learning alongside classmates from all over the world was one of the things that I enjoyed most. This helped me make good connections with people from Panama, Colombia and China. I would highly recommend doing the GIE programme before you're starting your university studies. This programme was a baseline for me and it has guided me well. One of the things I have found most helpful was that the programme helped me learn how to write and speak professionally in English."

Areej Khalil

Jordan

Building Services Engineer, MEPS Building Engineers, Auckland
Master of Engineering



PATHWAYS TO DEGREE STUDY FOR INTERNATIONAL STUDENTS

Foundation programmes

If your secondary school qualifications don't meet academic entry requirements for undergraduate study, then a foundation programme may be an alternative pathway.

Foundation studies help students successfully transition into university degrees. They focus on providing students with the knowledge, skills and confidence to excel in their degree of choice.

AUT guarantees entry from two partner institutions:

AUT Certificate in Foundation Studies taught by UP Education

This course is delivered by UP International College, which has one of the best New Zealand records in international education.

The curriculum includes essential training in English and independent learning skills. You can choose from a range of subjects, and can use AUT facilities while you're studying at UP.

up.education

Email: admissions@up.education

Phone: +64 9 307 5399

International Foundation Year taught by NCUK

NCUK has a worldwide network of over 90 study centres. You can choose to take your foundation programme locally (in your home country) before starting your undergraduate level degree in New Zealand.

ncuk.ac.uk

Email: enquiries@ncuk.ac.uk

Phone: +44 161 549 9220

Pathway programmes

International Year One (IYOne)

The IYOne is a credit-bearing qualification that enables you to study the first year of an undergraduate degree at an NCUK Study Centre. Once you have successfully completed the IYOne, you can enter the second year of a number of AUT bachelor's degrees.

Choose from:

- International Year One in Business
- International Year One in Engineering

ncuk.ac.uk/ncuk-qualifications/ncuk-international-year-one

The Pre-Master's Programme (PMP)

The PMP will provide you with the research skills and the English language knowledge you need to succeed in a postgraduate qualification at AUT.

ncuk.ac.uk/ncuk-qualifications/ncuk-pre-masters-programme

Partnership programmes

Alternatively, AUT offers a range of options for students who prefer to begin their university journey offshore in their home country, and then transition to AUT to complete their programme in New Zealand.

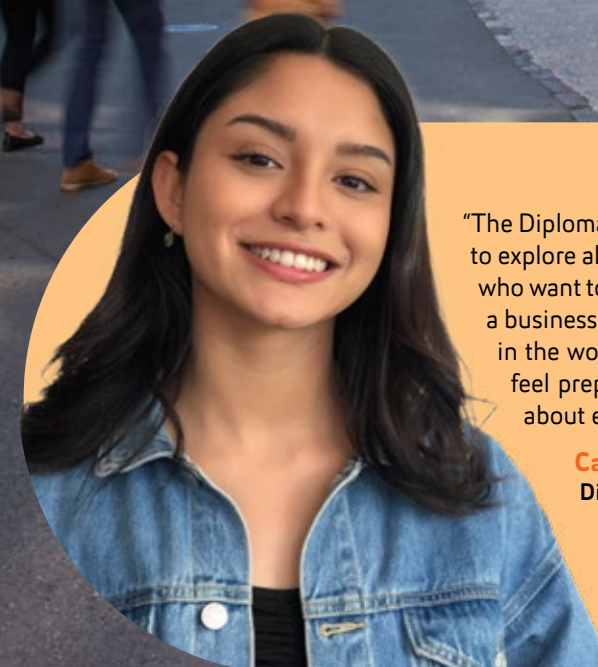
We have a wide range of partnerships globally. If you're interested in finding out more about this option email international@aut.ac.nz

CERTIFICATES AND DIPLOMAS AT AUT

You can also start your studies at AUT with a certificate or diploma programme if you don't meet the entry requirements for your chosen bachelor's degree. Certificates and diplomas often share some courses with relevant bachelor's degrees, and can serve as a pathway into your chosen degree.

Certificates and diplomas include:

- Certificate in Applied Science/Diploma in Applied Science – pathway into the Bachelor of Science
- Certificate in Legal Studies – pathway into the Bachelor of Laws
- Certificate in Science and Technology – pathway into computing and engineering degrees
- Certificate in Sport and Recreation – pathway into the Bachelor of Sport and Recreation
- Diploma in Arts – pathway into the Bachelor of Arts, Bachelor of Communication Studies
- Diploma in Business – pathway into the Bachelor of Business



"The Diploma in Business is a great introductory programme that enables you to explore all the areas business has to offer. It's a great programme for those who want to learn a bit more about business and what it actually means to do a business degree. The programme has made me feel much more confident in the world of business. I hadn't done business in high school but I now feel prepared to move into a bachelor's degree and to have discussions about economics, consumer behaviour and finance."

Camila Roa-Nunez
Diploma in Business student

SCHOLARSHIPS & FEES

Scholarships and awards

Help fund your university study with scholarships and awards. There is a wide range of scholarships and awards available to AUT students at all stages of their study, including the scholarships listed below. Visit the scholarships website aut.ac.nz/scholarships for a current list of scholarships offered by AUT and external funders, as well as application forms and closing dates.

AUT International Academic Achievement Scholarship

Available for both offshore and onshore international students, these high-value scholarships (up to NZD\$20,000 each), recognise international students with exceptional levels of academic achievement. Awards are available for undergraduate and postgraduate students.

AUT International Student Accommodation Scholarship

To financially support new and returning international students at AUT, these scholarships (NZD\$5,000 contribution to rent), guarantee accommodation at AUT's Te Āhuru Mayoral Drive Student Accommodation, located just a minute's walk from the AUT City Campus, offering quality, modern, single studio-style living.

AUT International Excellence Scholarship – Faculty of Culture and Society

These scholarships (consisting of NZD\$7,000 contribution to fees), support high-achieving international students as they begin their journey towards study in an undergraduate or postgraduate programme within AUT's Faculty of Culture and Society.

New Zealand AUT-NCUK Excellence Scholarship

This scholarship is exclusive to high achieving international students enrolled in the NCUK New Zealand Global Education Pathway programmes, who want to study at AUT.

Vice-Chancellor's Doctoral Scholarship

AUT awards these scholarships to high-achieving candidates applying to an approved doctoral programme.

Ministry of Foreign Affairs and Trade New Zealand – Manaaki New Zealand Scholarships

The New Zealand Government provides scholarships to international students from selected countries through the Manaaki New Zealand Scholarships programme. The scholarship supports students with full tuition fees, a living allowance and other financial assistance to complete their qualification in New Zealand. Visit nzscholarships.govt.nz/en

External scholarships

External sponsorship agencies, such as government departments, provide opportunities for students to study overseas. We recommend checking for the country-specific scholarships available in your home country.

This list was correct at the time of publication (December 2021).

Fee payment options

You can find the tuition fees for your chosen programme on pages 16 to 39. The tuition fees are annual rates for full-time study unless specified – students should expect and budget for fees increasing on an annual basis. The tuition fees shown are for planning purposes only and don't constitute a financial agreement. A student services levy and insurance will be charged separately on an annual basis at the rate applicable for that year. For the latest information please visit aut.ac.nz/fees

New international students can choose to pay their fees with one of the options below:

Annual payment option

Your required payment will be the tuition fees charged for the year you first enrol in your programme of study, with subsequent years' fee increases capped at the yearly approved percentage increase set by AUT Council, provided that study is undertaken on a continuous basis (in 2021 it was 1.1% increase and in 2022 it is 1.7%). You can choose to pay by semester or full year.

Enrolment exceeding the normal duration of the programme of study will result in fees being charged at the standard published rate for the year in which the continued or additional study is undertaken.

Full programme tuition fees option

You can pay for your entire programme of study tuition fees upfront, thus avoiding any tuition fee increases in later years. Please note that any break in study will result in fees being charged at the standard published rate for the year in which the continued study is undertaken.



"I chose to study food science because I can help my country improve its food security, and develop the economy by marketing and exporting quality food products. One of the reasons I've really enjoyed my studies is because the class sizes in lectures are reasonable, so it's easy to engage with the lecturers. I also like that the lecturers are always willing to provide assistance when needed."

Litia Takuia

Kiribati

3rd-year student, Bachelor of Science in Food Science
(supported by a Ministry of Foreign Affairs and
Trade New Zealand – Manaaki New Zealand Scholarship)

YOUR NEW HOME: LIVING ON CAMPUS

Living on campus can be a great option for students – you will only be minutes away from AUT and it's an easy way to meet other students.

AUT accommodation options

Wellesley Student Apartments

City Campus

- Three minutes' walk from AUT's main buildings
- Each apartment is fully furnished with four or five bedrooms, two bathrooms, a shared lounge/dining area and a kitchen
- There are three bedroom sizes to choose from and every bedroom has a king single bed, wardrobe, desk, chair, bookshelf and heated towel rail
- There are 13 bedrooms in the facility available for students with special access needs
- On-site services and facilities include staff who are available 24/7, outdoor spaces and laundry

Te Āhuru Mayoral Drive Student Accommodation

City Campus

- One-minute walk from AUT's main buildings
- Brand-new, purpose-built, high-spec studio units
- Each unit includes a king single bed, kitchenette with fridge and microwave, bathroom, study desk and chair, storage space
- There are 25 bedrooms (one on each floor) for students with special access needs
- On-site services and facilities include a recreation centre and sports court, 24/7 security, and shared study, social and dining spaces

Akoranga Student Village

North Campus

- Five minutes' walk from AUT's main buildings
- Each apartment is fully furnished with four or five bedrooms, two bathrooms, a shared lounge/dining area and a kitchen
- Some bedrooms have a double bed and some have a single bed
- All bedrooms have a wardrobe, desk, chair and bookshelf
- There are eight bedrooms in the facility available for students with special access needs (including bathrooms open to the person)
- On-site services and facilities include staff who are available 24/7, outdoor spaces and laundry

When you apply to live in AUT student accommodation, you can request to stay in an alcohol-free, single sex or rainbow friendly apartment.

"What I like most about Te Āhuru Mayoral Drive Student Accommodation is the ability to live by myself in my own studio apartment. The social activities are the best way to get to know people living in the building and on your floor. These activities make it easy to find friends and meet people who might be studying the same degree as you, which can help you as you could study together."

Alexander Cordts

Germany

3rd-year student, Bachelor of Business in Management



Residential life

AUT student accommodation runs a variety of social events every month from quizzes and baking challenges to exercise classes and bingo. During Orientation, students will be provided with a calendar of events for the year.

Our social events aim to be accessible to everyone, so students can expect a mix of virtual and in-person activities, for small groups and the full village.

When to apply for student accommodation

- Applications open on 1 August (for Semester 1 of the following year) or 1 May (for Semester 2)
- Online application

More information

[aut.ac.nz/
accommodation](https://aut.ac.nz/accommodation)



HOW TO APPLY

Below is the step-by-step guide to the applications process. For more information visit aut.ac.nz/apply

1

APPLY EARLY

Places are limited. Submit your application well before the semester starts.

Applying for the Master of Philosophy (MPhil) and Doctor of Philosophy (PhD)

If you are planning to enrol in a Master of Philosophy (MPhil) or Doctor of Philosophy (PhD), email the Graduate Research School doctoral.and.mphil.admissions@aut.ac.nz

2

COMPLETE THE APPLICATION FORM

Apply online at apply.aut.ac.nz

- Indicate your programme(s) of choice and major (if known)
- Check that you meet check the English language requirements and international student entry requirements

You can also apply using an AUT approved registered agent. For a list of AUT registered agents visit aut.ac.nz/international-agents

SUBMIT YOUR APPLICATION

WE ACKNOWLEDGE YOUR APPLICATION

- We will send you an acknowledgment email, which explains how to check the status of your application
- We will contact you if we need more information

WE ASSESS YOUR APPLICATION

- We assess your application to ensure you have met the entry criteria for the programme(s) you are applying for
- We consider your academic history and relevant experience to ensure you can succeed in your programme
- We let you know if your application has been successful

POSSIBLE OUTCOMES

CONFIRMED We would like to offer you a place to study at AUT

PROVISIONAL You have met some of the criteria for entry to your chosen programme of study and we would like to offer you a provisional place to study at AUT. If you don't meet the rest of the requirements, for example University Entrance, then this offer will be withdrawn

CONDITIONAL You have to meet the conditions and approvals listed in your conditional offer to be able to secure a formal offer of place

DECLINED If you don't meet the entry requirements or all places are taken, we may offer you an alternative programme

3

ACCEPT YOUR OFFER

It's important that you sign and return your offer of place as soon as possible. To guarantee your place you must pay all fees in full by the due date. Places are subject to availability.

If all places in the programme are taken when you decide to pay the fees and accept the Offer of Place, we will offer you a place in the next available intake.

If you can't start at AUT in the semester stated on your offer, you can apply for a deferral.

If you applied through an AUT registered agent, all correspondence will be sent to both you as the applicant and the agent.



PREPARING TO STUDY IN NEW ZEALAND

International student fee payment options

AUT has partnered with Western Union to provide international students with a reliable, fast and secure way for you to pay. This payment method is by telegraphic transfer in local currency where available.

For the full list of payment options visit aut.ac.nz/international/payment

The Education (Pastoral Care of International Students) Code of Practice

AUT has agreed to observe and be bound by the New Zealand Government's Code of Practice for the Pastoral Care of International Students.

Copies of the code are available in six languages at nzqa.govt.nz/the-code

New Zealand student visa

One of the most important steps is to get your student visa organised before you reach New Zealand. Without a valid visa and medical/travel insurance it's unlawful to study in New Zealand.

To find out more visit immigration.govt.nz or studyinnewzealand.govt.nz/how-to-apply/visas

Medical and travel insurance

The New Zealand Government requires all international students to have appropriate insurance. Most international students are not entitled to publicly funded health services while in New Zealand. If you receive medical treatment during your visit, you may be liable for the full costs of the treatment. That is why it is so important that you have medical and travel insurance while studying at AUT.

To make it easy, we include AUT's default medical insurance, the Studentsafe Inbound University plan, as part of your Offer of Place. However, you don't have to accept the AUT insurance policy, and can choose an alternative from an approved provider on our website.

To find out more visit aut.ac.nz/international/insurance

Living costs

If you are coming to New Zealand on a student visa, Immigration New Zealand currently requires you to have enough funds to cover a return ticket home. You will also need to have enough money to adequately cover your living costs. Living costs can vary considerably depending on your lifestyle.

To find out more visit studyinnewzealand.govt.nz/live-work/cost-of-living

Working in New Zealand

As an international student you may be eligible to work part-time during the academic year and full-time during scheduled vacations. Please note that the number of hours you can work during your study will not be enough to fund your studies. Master's by research and doctoral students may be granted unlimited work rights.

To find out more visit immigration.govt.nz/new-zealand-visas/options/study/working-during-after-your-study/working-on-a-student-visa

International fee refund

If you need to change or withdraw from your programme of study, you may be entitled to a refund. Our friendly Student Hub team can answer any question you may have about refunds or the refund policy.

To find out more visit aut.ac.nz/fee-refunds

iStudent Complaints

This is an independent Dispute Resolution Scheme (DRS) established by the New Zealand Government to assist international students with any disputes between them and their providers.

To find out more visit istudent.org.nz/about-istudent-complaints

IMPORTANT DATES

- Semester 1: late February to late June
Semester 2: mid-July to mid-November
- Business professional master's programmes have different start dates: Late February/early March and late October
- PhD has four intakes per year: 1 February, 1 May, 1 July and 1 November
- Graduation: usually in July/August (Winter Graduation) and December (Summer Graduation)

For more information about semester dates visit aut.ac.nz/study/semester-dates

FIND OUT MORE

Visit our website

To find out more about study at AUT, including more details about our programmes and the courses you could study, entry requirements, and information about academic staff and their areas of expertise visit aut.ac.nz

Contact us online

If you have any questions about studying with us, you can contact us at aut.ac.nz/enquire

Get advice from our registered agents

AUT works with a number of representatives globally. Our registered agents offer a range of services to help you choose the right programme and apply to university, as well as provide advice on studying and living in New Zealand. To see a list of our approved agents in your country visit aut.ac.nz/international-agents

Meet AUT staff overseas

The AUT International team visit many countries to meet future international students and discuss study options. To find out when AUT staff are visiting your country visit aut.ac.nz/meet-aut

AUT open day

If you're based in New Zealand, our open day at the City Campus showcases everything AUT has to offer to help you make an educated decision about university study. To find out more visit aut.ac.nz/live

Connect with us now:

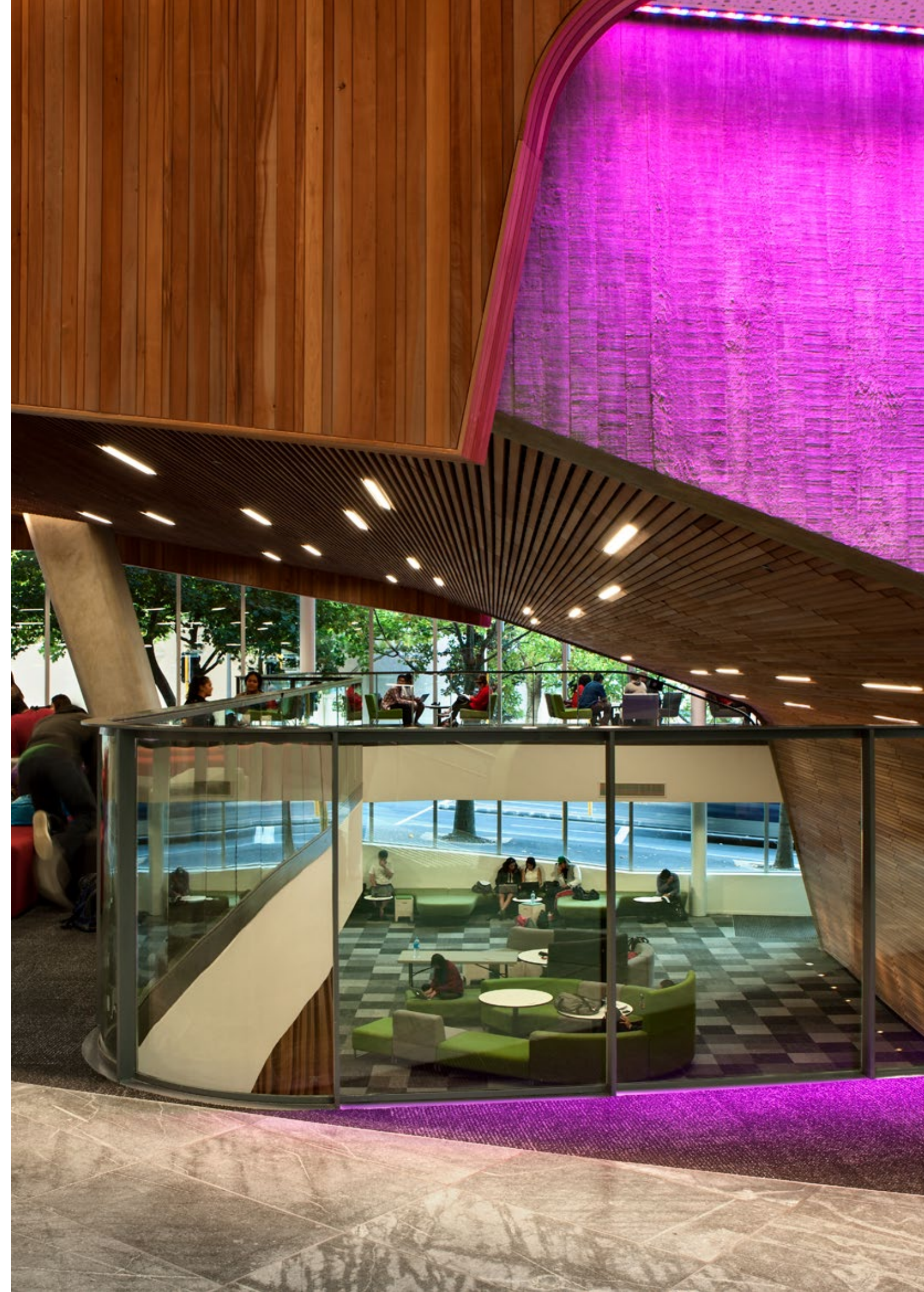


@autuni

#autuni



WeChat Id:
Aut_NewZealand





0800 AUT AUT (0800 288 288)

Auckland University of Technology
Auckland, New Zealand

aut.ac.nz

Enquire now

aut.ac.nz/enquire

CITY CAMPUS

55 Wellesley Street East, Auckland Central

NORTH CAMPUS

90 Akoranga Drive, Northcote, Auckland

SOUTH CAMPUS

640 Great South Road, Manukau, Auckland

Connect with us now:



@autuni

#autuni