



Whitireia
NEW ZEALAND



WelTec

2019

INTERNATIONAL PROSPECTUS

WELLINGTON | AUCKLAND | NEW ZEALAND



KIA ORA

I am delighted to welcome you to this joint prospectus for WelTec and Whitireia. Institutes of Technology and Polytechnics (ITP) training is the pathway to an enormous range of satisfying and rewarding careers; careers that underpin New Zealand's economy and support our society.

Within this prospectus you will find programmes being offered by WelTec and Whitireia in the Wellington region and Auckland in 2019. All programmes have been developed with industry to provide you with the knowledge, practical skills and hands-on experience required to prepare you for employment or further training.

At WelTec and Whitireia we have highly skilled teaching and support staff who work hard to ensure you succeed as a student; staff will support you every step of the way. Our classes are small and we have a wide range of support services to ensure you achieve your study and career goals.

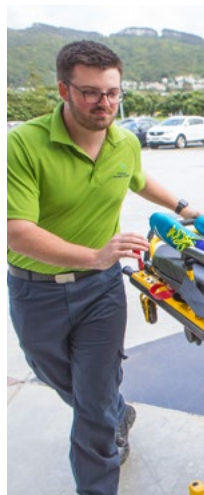
Thank you for considering the many study options available with us in 2019.

Ngā mihi nui ki a koutou

Chris Gosling
CHIEF EXECUTIVE
WELTEC AND WHITIREIA









CONTENTS

Working together	6
Study with us	8
Student support	10
International students	12
English language	13
Find a programme of study	14

Programmes

Creative Industries	17
Services Industries	23
Social and Community Services	29
Manufacturing and Technology	33
Construction and Infrastructure	39



WORKING TOGETHER

WelTec and Whitireia are two long-established and highly-successful ITPs, widely respected by employers and with excellent student success rates.

Recently it was agreed that the interests of students, communities and industry would be better served by the two ITPs **working together**.

This means that WelTec and Whitireia **work together** to provide the best possible study choices for students in the Wellington region and beyond.

We work together to develop high quality facilities like Te Kāhui Auaha, our new creative campus in Wellington. Developments like this ensure that our students have the best possible learning environments.

Most importantly, **we work together** to provide choice and access to learning and services across our campuses in Wellington, Porirua, Petone and Auckland. We are learning together and improving together to deliver more to students.

The partnership between WelTec and Whitireia is driven by a commitment to put students first, by providing more choice, more opportunity and improved experience.

Our partnership is important, but so are our roots and our connections to the local communities that have supported us and who we have served over many years. Each ITP retains strong links to its local community and iwi which will continue to grow and flourish.

The partnership between WelTec and Whitireia is unique in New Zealand. It provides an exciting opportunity to follow a path which provides the best possible professional and vocational education for students, while respecting and maintaining the distinctive strengths of two quality tertiary institutions.





STUDY WITH US

PRACTICAL LEARNING

Teaching and learning is focused on the real world so you will graduate work-ready, with the skills to succeed. In many programmes you will learn in training facilities such as our onsite beauty and hairdressing salons, restaurants and cafés, or film studios, radio broadcasting suites, music studios, digi labs and health simulation suites.

FLEXIBLE OPTIONS

We have a range of programmes available at campuses in Porirua, Petone, Wellington and Auckland.

QUALIFICATIONS THAT EMPLOYERS VALUE

Our qualifications are recognised in New Zealand and around the world. All have been developed in conjunction with industry and approved by the New Zealand Qualifications Authority.

INDUSTRY CONNECTIONS

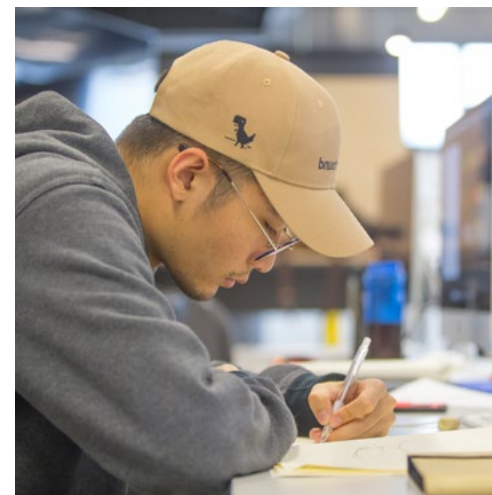
All our study programmes are developed in partnership with industry, to ensure you graduate with skills that employers need.

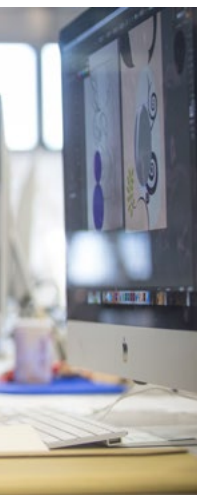
INTERNSHIPS

There are opportunities to work alongside your study and gain experience. Try a hospitality internship or have the opportunity to gain part-time work in the IT industry.

FACILITIES

Our fantastic facilities include award-winning kitchens at our School of Hospitality in Wellington city, the Regional School of Construction in Petone, our state-of-the-art health and social services training facilities in Porirua and of course at Te Kāhui Auaha which includes purpose built spaces such as studios, a theatre, cinema, hair and makeup salons, workshops, recording studios, darkroom, mixing rooms and an in-house radio station.





STUDENT SUPPORT

We offer a wide a range of support services to all students who study with us.

CAREERS SUPPORT

We will give you careers advice and guidance on seeking a job. Our job broker teams have close links with employers who are after new graduates for roles. Your tutors can often connect you with opportunities.

CHILDCARE

We have fully licensed childcare centres at our Petone and Porirua campuses. If you are interested enquire early, places are limited.

COMPUTERS AND IT

Come in and work on one of our computers. You will also find printers and photocopiers. If you bring your own device, you can connect to our wireless internet. We have helpdesk staff on campus too if you have any questions.

COUNSELLING

We offer a confidential 24/7 counselling service provided off-campus by Vitae. You are entitled to three free counselling sessions per year.

HEALTH

We want you to be in good health so you can perform your best. We can help provide access to a range of health services regardless of the campus you are studying at.

LIBRARY

Sometimes you will need books or journal articles for an assignment. At our libraries, you can access a range of resources for your study, including books, newspapers, journals, audio-visual material, ebooks and online databases.

STUDENT VOICE

Through your Student Voice representatives, you can put forward ideas about teaching and learning, events, activities or anything to do with your study experience. You will have Student Voice representatives in your programme of study.

STUDENTS WITH A DISABILITY

We have dedicated, experienced people to support you if you have a disability or learning difficulty. We also offer medical and mental health support. We will work with your tutors and provide any special resources such as a reader/writer, specialised equipment or tutoring assistance.

STUDY SUPPORT

We are here to help you succeed in your study. Whether it's planning your study, writing assignments, report and essay writing, or maths and study skills. You can get in touch in person, on the phone or online.

TRANSPORT

Please check our websites for information on transport options, which includes a free bus service between Wellington campuses.



INTERNATIONAL STUDENTS

For practical advice and information on preparing for student life in New Zealand, go to www.immigration.govt.nz and www.studyinnewzealand.govt.nz

The international pages on our websites www.weltec.ac.nz, www.whitireia.ac.nz and www.teauaha.com outline the application process for international students, including English language and equivalent academic entry requirements for each programme.

SPECIALIST SERVICES FOR INTERNATIONAL STUDENTS

We have dedicated teams to support international students. Our expert staff can help you choose the right programme, and provide information and advice to prepare you to live and study in New Zealand.

EDUCATION (PASTORAL CARE OF INTERNATIONAL STUDENTS) CODE OF PRACTICE

WelTec and Whitireia have agreed to observe and be bound by this Code of Practice (2016), which is legislated by the New Zealand Government and published on the parliamentary website www.legislation.govt.nz. For more information, frequently asked questions, and how to make a complaint see the New Zealand Qualifications Authority (NZQA) website www.nzqa.govt.nz

IMMIGRATION

Full details of visa requirements, advice on eligibility for employment in New Zealand while studying, and reporting requirements are available through the Immigration New Zealand website www.immigration.govt.nz

VISA CONDITIONS

A student visa (or a limited visa granted for the purpose of study) is subject to conditions and any breaches must be reported to Immigration New Zealand.

Visa conditions include, but are not limited to:

- Having sufficient funds for maintenance while in New Zealand
- Attending the programme at all times unless there are genuine reasons for any absences, and making satisfactory academic progress
- Studying at the place of study specified on the student visa
- Having acceptable insurance for the duration of the student visa
- Working no more than the hours specified on the student visa
- Living with a parent or legal guardian if required

ELIGIBILITY FOR HEALTH SERVICES

Most international students are not entitled to publicly funded health services while in New Zealand, so may be liable for the full costs of any treatment. Full details on entitlements to publicly funded health services are available through the Ministry of Health, go to www.health.govt.nz

The Accident Compensation Corporation provides accident insurance for all New Zealand citizens, residents, and temporary visitors to New Zealand, but international students may still be liable for all other medical and related costs. For more information, go to www.acc.co.nz

COMPULSORY MEDICAL AND TRAVEL INSURANCE

Whitireia and WelTec require all enrolled international students to have approved health and travel insurance for the duration of their enrolment (regardless of the visa type). A student visa holder is also required to have approved health and travel insurance for the duration of their visa or until they depart New Zealand, whichever comes first.

WelTec and Whitireia have arrangements in place for our preferred insurance, policy and provider for international students. Student applicants will be invoiced for the insurance premium during the international admissions process.

STUDENT ACCOMMODATION

There is a range of accommodation options available to you when you study with us. See our websites for information about short and long-term accommodation options. If a student is under the age of 18 it is a Code of Practice requirement that the student be in the care of a residential caregiver.

STUDENTS UNDER 18

WelTec and Whitireia accept international students aged 17 years (but not younger) at the time their programme starts. Special arrangements apply to students aged under 18 years under the Code of Practice, including requirements for parental consent and communications and special accommodation arrangements. See further details on our websites.

ENGLISH LANGUAGE

Our English language programmes prepare you for study or employment.

New Zealand Certificate in English Language (Levels 2-5)

Levels	2-5
Location	Porirua Auckland
Duration	17 weeks, full-time
WELTEC	WHITIREIA

These certificates prepare you to communicate and participate in social, academic and workplace environments. You will be placed in an appropriate certificate based on your level of English.

For more information check out:
www.weltec.ac.nz or www.whitireia.ac.nz



FIND A PROGRAMME OF STUDY

Whether you are leaving school, retraining or coming to New Zealand to study, we can help you achieve your goals. Gain new skills and start your career with us.

FIND A PROGRAMME

In the next section of this prospectus you will find our programmes. They have been grouped in one of the following Vocational Pathways:

1. **Creative Industries**

2. **Primary Industries**

3. **Services Industries**

4. **Social and Community Services**

5. **Manufacturing and Technology**

6. **Construction and Infrastructure**



In each Vocational Pathway, you will find the programme under the relevant category. For example, 'Accounting' is under 'Business'.

On each programme, you will see the level of study, where you can study it and its duration.

NAVIGATING YOUR WAY AROUND OUR PROGRAMMES IS EASY!

EXAMPLE

Bachelor of Creativity (Visual Arts)

NZQA Level	→	Level	7
Where you can study	→	Location	Wellington
Duration	→	Duration	3 years, full-time
English language requirements	→	IELTS	6.0 (no band lower than 5.5)
Who offers the programme	→	WHITIREIA	

Website for more details →

For this major you can elect to study one of the following media – painting, print making, sculpture, textiles, photography or jewellery. You will increasingly specialise in your chosen media throughout your study. In your final year you will approach a variety of galleries to showcase your work, while developing portfolios for employment or you will create a major body of work for exhibition. Alongside studio work, you will explore the theory and history of art creation.

For more information check out:
www.whitireia.ac.nz

FOR MORE INFORMATION

Contact us to find out about any of our programmes, entry requirements, fees or start dates. You will find all this information on our websites too.

WelTec

www.weltec.ac.nz
+64 4 920 2505
international@weltec.ac.nz

Whitireia

www.whitireia.ac.nz
+64 4 237 3100
international@whitireia.ac.nz



CREATIVE INDUSTRIES

Creative Technologies	18
Creative Writing	19
Music	19
Performing Arts	20
Publishing	20
Visual Arts and Design	24



Creative Technologies

New Zealand Certificate in Creativity (Level 4)

Level	4
Location	Wellington Petone Porirua
Duration	17 weeks, full-time
IELTS	5.5 (no band lower than 5.0)
WELTEC	WHITIREIA

Start your creative journey. Get a taste of a wide range of creative disciplines. You'll learn about art and design, illustration, digital media and photography. Develop skills in digital modelling and 3D printing. Start to build a professional portfolio.

For more information check out:
www.weltec.ac.nz or www.whitireia.ac.nz

New Zealand Diploma in Creativity (Level 5)

Level	5
Location	Wellington
Duration	1 year, full-time
IELTS	6.0 (no band lower than 5.5)
WELTEC	

Develop your creative thinking skills. Work with a range of physical and digital media and technologies. Virtual Reality. Digital Modelling. Animation. Graphics. Learn through collaborative projects at Te Auaha.

For more information check out:
www.weltec.ac.nz

New Zealand Diploma in Creativity (Level 6)

Level	6
Location	Wellington
Duration	1 year, full-time
IELTS	6.0 (no band lower than 5.5)
WELTEC	

Build on the Level 5 diploma, which is a prerequisite for this course. VR. Animation. Gaming. Visual arts. Motion graphics. 2D and 3D printing. Laser cutting. Launch yourself into project work. Learn through collaborative and interdisciplinary projects at Te Auaha.

For more information check out:
www.weltec.ac.nz

Bachelor of Creativity (Digital Media)

Level	7
Location	Wellington
Duration	3 years, full-time
IELTS	6.0 (no band lower than 5.5)
WELTEC	

In this major you can focus on Creative Technologies or Visual Communication Design. The Creative Technologies stream offers a range of current and emerging technologies with potential for integration in a variety of creative ways such as VR, animation, gaming and motion graphics. The Visual Communication Design stream develops skills in design fundamentals, typography and graphics that apply to publication, branding, motion graphics and web design. You can select courses from either stream.

For more information check out:
www.weltec.ac.nz

Graduate Diploma in Creative Technologies

Level	7
Location	Wellington
Duration	1 year, full-time
IELTS	6.0 (no band lower than 5.5)
WELTEC	

The programme is focused on industry projects as well as your own major project. Specialise in digital pre- and post-production, animation, workshop practice, creative IT, project management or creative leadership. Designed for those with a bachelor's degree or relevant experience.

For more information check out:
www.weltec.ac.nz



Creative Writing

Bachelor of Creativity (Writing)

Level	7
Location	Wellington
Duration	3 years, full-time
IELTS	6.0 (no band lower than 5.5)
WHITIREIA	

This major focuses on creative writing. In year one you will develop skills in short fiction, script-writing, poetry and non-fiction. In year two and three you will specialise in one genre so that by the end of three years you will have produced a manuscript that is ready to be pitched to a publisher. You will have the opportunity to collaborate with other creatives such as actors, designers, illustrators, film makers, broadcasters, musicians and dancers.

For more information check out:
www.whitireia.ac.nz

Graduate Diploma in Creative Writing

Level	7
Location	Wellington
Duration	1 year, full-time
IELTS	6.0 (no band lower than 5.5)
WHITIREIA	

Experienced writers are supported to write a manuscript of poetry, fiction, non-fiction or a script. Includes individual mentoring from well-known professionals.

For more information check out:
www.whitireia.ac.nz



Music

Bachelor of Creativity (Music)

Level	7
Location	Wellington
Duration	3 years, full-time
IELTS	6.0 (no band lower than 5.5)
WHITIREIA	

This major focuses on developing successful music careers. It offers a range of performance, recording, composition and song writing opportunities. Within this contemporary programme you can pathway in Performance, Creation and Composition, Recording/Production.

For more information check out:
www.whitireia.ac.nz



Performing Arts

Bachelor of Creativity (Performing Arts)

Level	7
Location	Wellington
Duration	3 years, full-time
IELTS	6.0 (no band lower than 5.5)

WHITIREIA

This major gives you the opportunity to become a part of new dance forms in New Zealand. The combination of study in heritage dance forms such as Māori, Samoa and Cook Islands with contemporary New Zealand dance leads to the production of ground-breaking work in your third year of study. You will explore cross discipline work through collaborations and leave well prepared for managing your careers in the dance and cultural tourism industries.

For more information check out:
www.whitireia.ac.nz



Publishing

Graduate Diploma in Publishing (Applied)

Level	7
Location	Wellington
Duration	1 year, full-time
IELTS	7.0 (no band lower than 6.5)

WHITIREIA

Get qualified for a career in digital and print publishing with this popular and highly regarded programme. Gain skills in editing, marketing, layout, production and project management. You will apply your learning to industry-based print and ebook projects and undertake work experience in publishing firms throughout New Zealand.

For more information check out:
www.whitireia.ac.nz



Visual Arts and Design

Bachelor of Creativity (Visual Arts)

Level	7
Location	Wellington
Duration	3 years, full-time
IELTS	6.0 (no band lower than 5.5)
WHITIREIA	

For this major you can elect to study one of the following media – painting, print making, sculpture, textiles, photography or jewellery. You will increasingly specialise in your chosen media throughout your study. In your final year you will approach a variety of galleries to showcase your work, while developing portfolios for employment or you will create a major body of work for exhibition. Alongside studio work, you will explore the theory and history of art creation.

For more information check out:
www.whitireia.ac.nz

Bachelor of Creativity (Digital Media)

Level	7
Location	Wellington
Duration	3 years, full-time
IELTS	6.0 (no band lower than 5.5)
WHITIREIA	

In this major you can focus on Creative Technologies or Visual Communication Design. The Creative Technologies stream offers a range of current and emerging technologies with potential for integration in a variety of creative ways such as VR, animation, gaming and motion graphics. The Visual Communication Design stream develops skills in design fundamentals, typography and graphics that apply to publication, branding, motion graphics and web design. You can select courses from either stream.

For more information check out:
www.whitireia.ac.nz





SERVICES INDUSTRIES

Business	24
Hospitality	26
Tourism	27



Business

New Zealand Diploma in Business (Level 5)

Level	5
Location	Petone
Duration	1 year, full-time
IELTS	5.5 (no band lower than 5.0)
WELTEC	

Thrive in the fast changing business environment by learning key skills. Study business operations, human resources, and marketing and sales strategies. Then, dedicate your development to Accounting or Management and apply what you learn on real-world projects.

For more information check out:
www.weltec.ac.nz

Bachelor of Applied Business and Management*

Level	7
Location	Wellington Petone Auckland
Duration	3 years, full-time
IELTS	6.0 (no band lower than 5.5)
WELTEC	WHITIREIA

Specialise in Accounting, Business Analysis & Information Management, Event Management, Hospitality Management, Innovation & Entrepreneurship, Marketing & Sales, Supply Chain & Logistics, and Tourism Management.

For more information check out:
www.weltec.ac.nz or www.whitireia.ac.nz

Graduate Diploma in Applied Business and Management*

Level	7
Location	Wellington Petone Auckland
Duration	3 years, full-time
IELTS	6.0 (no band lower than 5.5)
WELTEC	WHITIREIA

Specialise in Specialise in Accounting, Business Analysis & Information Management, Event Management, Hospitality Management, Innovation & Entrepreneurship, Strategic Management, Marketing & Sales, Supply Chain & Logistics, and Tourism Management.

For more information check out:
www.weltec.ac.nz or www.whitireia.ac.nz

Postgraduate Diploma in Management

Level	8
Location	Wellington Auckland
Duration	1 year, full-time
IELTS	6.5 (no band lower than 6.0)
WHITIREIA	

Gain advanced professional skills in business. This programme is designed as a staircase qualification towards the Master of Management but can be completed as a stand-alone qualification. Specialise in Finance in Wellington and Finance, Hospitality, Marketing or Information Systems in Auckland.

For more information check out:
www.whitireia.ac.nz

Master of Management

Level	9
Location	Auckland
Duration	18 months, full-time
IELTS	6.5 (no band lower than 6.0)
WHITIREIA	

Develop advanced knowledge and skills in your chosen area of specialisation and gain technical, strategic, professional, interpersonal and intellectual capabilities for a range of business careers. You will have an option to work with industry while you study which may allow you to launch your business career and differentiate yourself to others in competitive employment markets. Specialise in Finance, Hospitality, Marketing or Information Systems.

For more information check out:
www.whitireia.ac.nz



Bachelor of Applied Business Studies

Level	7
Location	Auckland
Duration	3 years, full-time
IELTS	6.0 (no band lower than 5.5)
WHITIREIA	

Learn practical skills applicable to a range of industries. Specialise in Management or Finance at our Porirua campus, and Marketing, Management, Finance or Hospitality at our Auckland campus. The papers that form the Finance major can contribute to meeting the academic requirements for becoming a Chartered Accountant, as set by Chartered Accountants Australia and New Zealand.

For more information check out:
www.whitireia.ac.nz

Bachelor of Applied Management

Level	7
Location	Petone
Duration	3 years, full-time
IELTS	6.0 (no band lower than 5.5)
WELTEC	

Learn business through real-world scenarios and by working with companies. Build the problem-solving tool-set needed to be a manager. You can major in Accounting, Event Management, Hospitality Management, Human Resources, Sales and Marketing, Strategic Management, or complete a double major.

For more information check out:
www.weltec.ac.nz

Graduate Diploma in Applied Business Studies

Level	7
Location	Porirua Auckland
Duration	1 year, full-time
IELTS	6.0 (no band lower than 5.5)
WHITIREIA	

If you have already completed a degree in another field of study, but want to gain specialist business skills to broaden your career options, study Management or Finance in Porirua; Marketing, Management, Finance or Hospitality in Auckland.

For more information check out:
www.whitireia.ac.nz

Graduate Diploma in Applied Management

Level	7
Location	Wellington Petone
Duration	1 year, full-time
IELTS	6.0 (no band lower than 5.5)
WELTEC	

Advance your skills in a specialist area: Accounting, Event Management, Hospitality Management, Human Resources, Sales and Marketing or Strategic Management. Complete an industry project and make business decisions at organisational and strategic levels. For those with a bachelor's degree or other qualification, combined with relevant industry experience.

For more information check out:
www.weltec.ac.nz



Hospitality

New Zealand Certificate in Baking (Generalist) (Level 4)

Level	4
Location	Wellington
Duration	1 year, full-time
IELTS	5.5 (no band lower than 5.0)
WELTEC	

Take your baking skills to new heights. Showcase your artistic side with craft baking, specialist patisserie skills, work experience and live production in our pop-up bakery.

For more information check out:
www.weltec.ac.nz

New Zealand Certificate in Cookery (Level 4)

Level	4
Location	Wellington
Duration	1 year, full-time
IELTS	5.5 (no band lower than 5.0)
WELTEC	

Develop cooking techniques and explore different cuisines, as well as learning about food preparation, food safety and nutrition. You will practice your skills in our training restaurants by cooking for paying customers. There is an opportunity to gain an internationally recognised City & Guilds qualification.

For more information check out:
www.weltec.ac.nz

New Zealand Diploma in Cookery (Advanced) (Level 5)

Level	5
Location	Wellington
Duration	1 year, full-time
IELTS	5.5 (no band lower than 5.0)
WELTEC	

Learn advanced cooking methods and techniques, a la carte, menu planning, costing and design, as well as kitchen management and supervisory skills. Gain an internationally-recognised City & Guilds qualification. At WelTec, you will focus on either cookery or patisserie, spend four weeks on an industry placement and prepare to train and guide others.

For more information check out:
www.weltec.ac.nz

New Zealand Diploma in Hospitality Management (Level 5)

Level	5
Location	Wellington
Duration	1 year, full-time (part-time options available)
IELTS	5.5 (no band lower than 5.0)
WELTEC	

Suited for aspiring hospitality managers. Focus on the business side of hospitality. Enhance your knowledge of food and beverage and accommodation management. Cover business operations, gain supervisory skills and work with a team to plan and execute an event.

For more information check out:
www.weltec.ac.nz



Tourism

New Zealand Diploma in Tourism and Travel (Level 5)

Level	5
Location	Wellington
Duration	1 year, full-time
IELTS	5.5 (no band lower than 5.0)
WELTEC	

Travel to a destination to learn first-hand from local tourism leaders about how to develop a region and promote tourism products. Study the industry, write business plans, develop expertise in planning an event and grow your marketing and management skills.

For more information check out:
www.weltec.ac.nz





SOCIAL AND COMMUNITY SERVICES

Foundation	30
Nursing	30
Paramedic	30
Professional Practice	30
Social and Community Work	31
Teaching (Early Childhood Education)	31



Foundation

New Zealand Certificate in Study and Career Preparation (Level 3 or 4)

Level	3 or 4
Location	Wellington Porirua Petone
Duration	17 weeks, full-time
IELTS	Level 3 requires: 5.5 (no band lower than 6.0) Level 4 requires: 6.0 (no band lower than 5.5)

WHITIREIA

These programmes provide a pathway in preparation for higher study at Levels 5-7 (diploma and degree levels). Two strands are offered: Health Science and Social Science.

For more information check out:
www.whitireia.ac.nz

New Zealand Certificate in Study and Career Preparation (Level 4) [Social Services]

Level	4
Location	Petone
Duration	17 weeks, full-time
IELTS	6.0 (no band lower than 5.5)

WELTEC

Considering a career in Addiction Support, Counselling or Youth Development? Gain the learning skills and confidence you need to succeed in the future. Prepare for higher-level study whilst learning in a supportive environment.

For more information check out:
www.weltec.ac.nz

Nursing

Bachelor of Nursing

Level	7
Location	Porirua
Duration	3 years, full-time
IELTS	6.5 in each band

WHITIREIA

Become a registered nurse with a range of clinical skills on this supportive programme offering hands-on experience. Our nursing graduates are highly sought after for their practical, work-ready skills.

For more information check out:
www.whitireia.ac.nz

Paramedic

Bachelor of Health Science (Paramedic)

Level	7
Location	Porirua
Duration	3 years, full-time
IELTS	6.5 in each band

WHITIREIA

Gain skills to provide emergency medical care in a range of situations. Know how to assess, stabilise, treat and refer patients in the pre-hospital environment. If you have an existing National Certificate or Diploma in Ambulance Practice (Level 5) and practicing level of EMT (BLS) or Paramedic (ILS), we also offer a flexible learning option. Please contact us for details.

For more information check out:
www.whitireia.ac.nz

Professional Practice

Postgraduate Diploma in Professional Practice

Level	8
Location	Porirua
Duration	1 year, full-time
IELTS	7.0 (no band lower than 6.5)

WELTEC

WHITIREIA

Focus on learning research methods for health and social practice and apply them in an area of your choice. Gain specialist knowledge and leadership skills to work in inter-professional teams. Focus on the delivery of quality services to diverse people and communities. Graduates may also gain credits towards Masters study.

For more information check out:
www.weltec.ac.nz or www.whitireia.ac.nz

Master of Professional Practice

Level	9
Location	Porirua
Duration	1.5 years, full-time
IELTS	7.0 (no band lower than 6.5)

WELTEC

WHITIREIA

Lead practice at an advanced level in health and social services. Be an effective leader of inter-professional teams and work with diversity. Apply your study and research to your work. The programme has an optional endorsement in education or leadership.

For more information check out:
www.weltec.ac.nz or www.whitireia.ac.nz

Social and Community Work

Bachelor of Social Work

Level 7

Location Porirua

Duration 4 years, full-time

IELTS 6.5 in each band

WHITIREIA

Become a social work professional whose practice is underpinned by reflective and critical thinking, and who understands the context of the individuals, families and communities they serve. Gain your first step to Social Workers Registration Board (SwRB) registration.

For more information check out:
www.whitireia.ac.nz



Teaching (Early Childhood Education)

Bachelor of Teaching (Early Childhood Education)

Level 7

Location Porirua

Duration 3 years, full-time

IELTS All students with English as an Additional Language (EAL) must have IELTS 7.0 in all bands

WHITIREIA

Become a confident and competent early childhood teacher with an excellent understanding of the social context in New Zealand. This programme includes practicum placements in early childhood centres which prepare you for the world of teaching young children.

For more information check out:
www.whitireia.ac.nz





MANUFACTURING AND TECHNOLOGY

Engineering 34

Information Technology 35



Engineering

New Zealand Certificate in Study and Career Preparation (Level 3 or 4) [Engineering]

Level	3 or 4
Location	Petone
Duration	17 weeks, full-time
IELTS	Level 3 requires: 5.5 (no band lower than 5.0) Level 4 requires: 6.0 (no band lower than 5.5)

WELTEC

Build foundation skills in engineering before doing the diploma or degree. You will gain knowledge of mathematics, physics and engineering principles for civil, mechanical or electrical engineering. There are options at Level 3 or Level 4 to suit your needs.

For more information check out:
www.weltec.ac.nz

New Zealand Diploma in Engineering (Level 6)

Level	6
Location	Petone
Duration	2 years, full-time
IELTS	6.0 (no band lower than 5.5)

WELTEC

Become an engineering technician. Gain hands-on skills in drawing, how to produce reports, assessing materials, mathematics and engineering management. In your second year, develop your knowledge further by choosing an engineering specialisation: Civil, Electrical or Mechanical.

For more information check out:
www.weltec.ac.nz

Bachelor of Engineering Technology

Level	7
Location	Petone
Duration	3 years, full-time
IELTS	6.0 (writing and speaking no lower than 6.0; reading and listening no lower than 5.5)

WELTEC

Combine theory and practical work to develop your problem solving and critical thinking skills. Gain experience by working on an industry project in your third year. Specialise in Civil, Electrical or Mechanical Engineering. This degree is accredited nationally and internationally.

For more information check out:
www.weltec.ac.nz

Graduate Diploma in Engineering (Mechatronics)

Level	7
Location	Petone
Duration	1 year, full-time
IELTS	6.5 (no band lower than 6.0)

WELTEC

Work on an engineering project to solve a real industry problem. Learn to design and implement a mechatronic system and work with technologies such as robotics. Understand power, control and automation systems. You will also be able to specialise further with a paper of your choice.

For more information check out:
www.weltec.ac.nz



Graduate Diploma in Engineering (Building Services)

Level	7
Location	Petone
Duration	1 year, full-time
IELTS	6.5 (no band lower than 6.0)
WELTEC	

Develop skills in building services, plant management, performance monitoring, system evaluation and design concepts. Increase your knowledge of sustainability and energy efficiency. Complete an industry project. Visit local plants to examine current practice and develop improvement models.

For more information check out:
www.weltec.ac.nz

Graduate Diploma in Engineering (Structures)

Level	7
Location	Petone
Duration	1 year, full-time
IELTS	6.5 (no band lower than 6.0)
WELTEC	

Structural engineers are responsible for the design and build of a range of projects. Explore theories and conceptual design to design structures using timber, masonry, steel and concrete. You will build a strong understanding of New Zealand codes. Work on an industry project.

For more information check out:
www.weltec.ac.nz

Graduate Diploma in Engineering (Water and Waste)

Level	7
Location	Petone
Duration	1 year, full-time
IELTS	6.5 (no band lower than 6.0)
WELTEC	

Focus on an engineering research or development project to apply your learning. You will understand ways to improve and protect water quality – a global issue. Explore theories and conceptual design of systems to make drinking water and dispose of water treatment waste.

For more information check out:
www.weltec.ac.nz

Information Technology

New Zealand Diploma in Information Technology (Technical Support) (Level 5)

Level	5
Location	Petone
Duration	1 year, full-time
IELTS	5.5 (no band lower than 5.0)
WELTEC	

Learn how to manage a helpdesk. Develop computer servicing and customer service expertise. Understand PC essentials by disassembling and rebuilding a computer. Work on hard drive recovery, basic software development, game design and databases.

For more information check out:
www.weltec.ac.nz

New Zealand Diploma in Information Systems (Level 5)

Level	5
Location	Porirua
Duration	1 year, full-time
IELTS	6.0 (no band lower than 5.5)
WHITIREIA	

Develop your skills in creating programs, web pages, networks and databases. Your stepping stone into the New Zealand Diploma in Information Systems (Level 6)* or into the Bachelor of Information Technology. Hands-on learning in IT.

For more information check out:
www.whitireia.ac.nz

New Zealand Diploma in Information Systems (Information Systems Innovation) (Level 6)

Level	6
Location	Porirua
Duration	1 year, full-time
IELTS	6.0 (no band lower than 5.5)
WHITIREIA	

Design and deliver innovative Information Systems solutions (for an organisation). Your stepping stone into the Bachelor of Information Technology or into the workforce. Hands-on learning in IT.

For more information check out:
www.whitireia.ac.nz

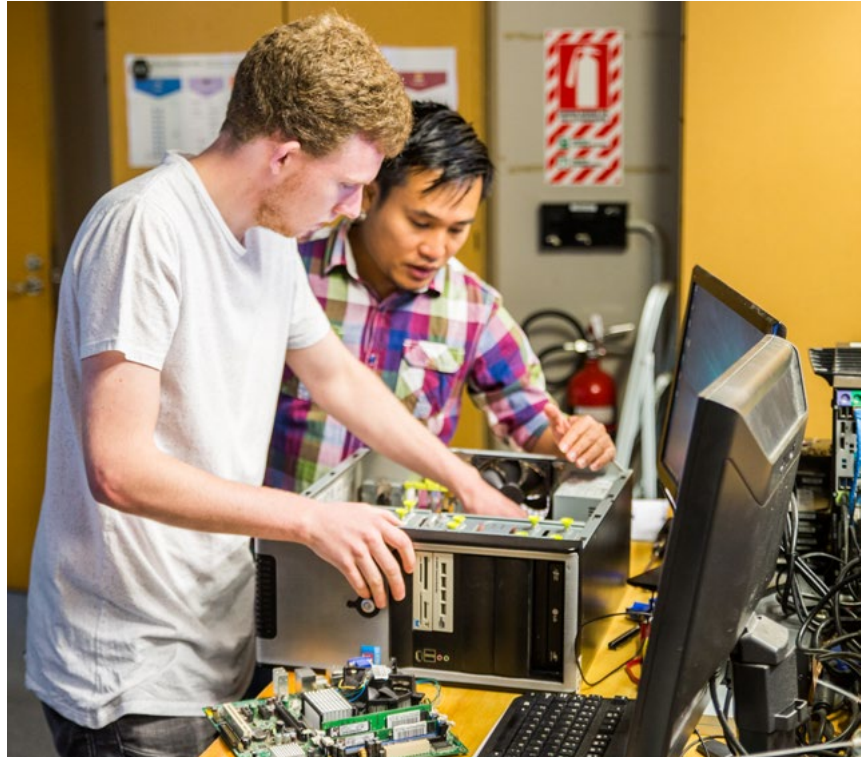
Information Technology

Bachelor of Information Technology

Level	7
Location	Petone Porirua
Duration	3 years, full-time
IELTS	6.0 (no band lower than 5.5)
WELTEC	WHITIREIA

Join the booming IT industry. Our students learn by building real software, apps and products. Develop your problem-solving skills. Work on an industry project in your final year. Specialise in an area of your choice: data science, cyber security, interaction design, networking and infrastructure or software development.

For more information check out:
www.weltec.ac.nz or www.whitireia.ac.nz



Graduate Diploma in Information Assurance and Security

Level	7
Location	Petone
Duration	1 year, full-time
IELTS	6.0 (no band lower than 5.5)
WELTEC	

Gain skills to recognise and assess cyber threats, and to carry out incident response and digital forensic activities. Learn how to design secure systems through policy, practices and technologies. Develop your technical skills to conduct security tests against networks.

For more information check out:
www.weltec.ac.nz

Graduate Diploma in Information Technology

Level	7
Location	Petone
Duration	1 year, full-time
IELTS	6.0 (no band lower than 5.5)
WELTEC	WHITIREIA

Apply a range of techniques and technology to solve a workplace or industry problem. Develop your knowledge with a selection of papers. Options in software and app development, systems design, testing, security, databases, networking, programming and information assurance. Gain recognition for your skills.

For more information check out:
www.weltec.ac.nz



Information Technology

Postgraduate Diploma in Information Technology

Level	8	
Location	Wellington Porirua	Auckland
Duration	1 year, full-time	
IELTS	6.5 (no band lower than 6.0)	
WELTEC	WHITIREIA	

Extend your knowledge through in-depth study of the latest technology skills in your area of specialty. Enhance your project management skills. Choose hands on learning relevant to your career, options includes data mining, cloud computing, business analysis, business intelligence, ICT infrastructure, information management, mobile devices, network design and management, security and forensics, quality assurance and systems architecture.

For more information check out:
www.weltec.ac.nz or www.whitireia.ac.nz

Master of Information Technology

Level	9	
Location	Wellington Porirua	Auckland
Duration	18 months, full-time	
IELTS	6.5 (no band lower than 6.0)	
WELTEC	WHITIREIA	

Choose hands on research relevant to your career from a range of options including data mining, cloud computing, business analysis, business intelligence, ICT infrastructure, information management, mobile devices, network design and management, security and forensics, quality assurance and systems architecture.

For more information check out:
www.weltec.ac.nz or www.whitireia.ac.nz



There is high demand for ICT graduates in the Wellington region and our programmes are designed to supply industry-ready talent.

The Wellington ICT Graduate School opened in 2016, and is a partnership between Victoria University of Wellington, Whitireia and WelTec.

You'll study alongside industry professionals on work-relevant, business-focused skills that will give you the specialised knowledge you need to succeed in the booming technology industry.

Students will work on real projects for start-ups, banks, consulting firms, film companies, multi-national corporations, SMEs and some of the fastest-growing tech companies in New Zealand. Students will also develop entrepreneurial, leadership, and business networking and interview skills.

You can enrol through either WelTec or Whitireia.





CONSTRUCTION AND INFRASTRUCTURE

Built Environment	40
Construction Management	40



Built Environment

New Zealand Diploma in Architectural Technology (Level 6)

Level	6
Location	Petone
Duration	2 years, full-time
IELTS	6.0 (no band lower than 5.5)
WELTEC	

Start your career as an architectural designer or draughtsperson. Develop your technical drawing skills using computer-aided design (CAD) software. Understand architecture, building methods, materials and building code requirements, then create architectural plans to build your portfolio.

For more information check out:
www.weltec.ac.nz

New Zealand Diploma in Construction (Quantity Surveying) (Level 6)

Level	6
Location	Petone
Duration	2 years, full-time
IELTS	6.0 (no band lower than 5.5)
WELTEC	

Learn about quantifying projects, estimating building costs and materials, and tendering and administering contracts. Gain skills in high demand and get into a well-paid career. Many of our students get part-time work in the industry in their second year.

For more information check out:
www.weltec.ac.nz



Construction Management

New Zealand Diploma in Construction (Construction Management) (Level 6)

Level	6
Location	Petone
Duration	2 years, full-time
IELTS	6.0 (no band lower than 5.5)
WELTEC	

Gain construction site management skills. Focus on developing plans for quality assurance and site safety, interpreting survey requirements for the set-out of a commercial building, measuring and managing resources, as well as growing your understanding of bidding for projects.

For more information check out:
www.weltec.ac.nz



PROGRAMMES A-Z

ACCOUNTING

Bachelor of Applied Business Studies	25
Bachelor of Applied Management	25
Bachelor of Applied Business and Management*	24
Graduate Diploma in Applied Business and Management*	24
Graduate Diploma in Applied Management	25
New Zealand Diploma in Business (Level 5)	24

ARCHITECTURAL TECHNOLOGY

New Zealand Diploma in Architectural Technology (Level 6)	40
---	----

BUILT ENVIRONMENT

New Zealand Diploma in Architectural Technology (Level 6)	40
New Zealand Diploma in Construction (Quantity Surveying) (Level 6)	40

BUSINESS

Bachelor of Applied Business Studies	25
Bachelor of Applied Management	25
Graduate Diploma in Applied Business Studies	25
Graduate Diploma in Applied Management	25
Bachelor of Applied Business and Management*	24
Graduate Diploma in Applied Business and Management*	24
New Zealand Diploma in Business (Level 5)	24
Master of Management	24

COOKERY

New Zealand Certificate in Baking (Generalist) (Level 4)*	24
New Zealand Certificate in Cookery (Level 4)	24
New Zealand Diploma in Cookery (Advanced) (Level 5)	24

CONSTRUCTION MANAGEMENT

New Zealand Diploma in Construction (Construction Management) (Level 6)	40
---	----

CREATIVE TECHNOLOGIES

Bachelor of Creativity (Digital Media)	18
Graduate Diploma in Creative Technologies	18
New Zealand Certificate in Creativity (Level 4)	18
New Zealand Diploma in Creativity (Level 5)	18
New Zealand Diploma in Creativity (Level 6)	18

CREATIVE WRITING

Bachelor of Creativity (Writing)	19
Graduate Diploma in Creative Writing	19

DIGITAL DESIGN

Bachelor of Creativity (Digital Media)	18
Graduate Diploma in Creative Technologies	18
New Zealand Certificate in Creativity (Level 4)	18
New Zealand Diploma in Creativity (Level 5)	18
New Zealand Diploma in Creativity (Level 6)	18

ENGINEERING

Bachelor of Engineering Technology	34
Graduate Diploma in Engineering (Building Services)	35
Graduate Diploma in Engineering (Mechatronics)	34
Graduate Diploma in Engineering (Structures)	35
Graduate Diploma in Engineering (Water and Waste)	35
New Zealand Certificate in Study and Career Preparation (Level 3 or 4) [Engineering]	34
New Zealand Diploma in Engineering (Level 6)	34

EVENT MANAGEMENT

Bachelor of Applied Management	25
Bachelor of Applied Business and Management*	24
Graduate Diploma in Applied Business and Management*	24

ENGLISH LANGUAGE

New Zealand Certificate in English Language (Levels 3-5)	13
--	----

FINANCE

Bachelor of Applied Business Studies	25
Bachelor of Applied Business and Management*	24
Graduate Diploma in Applied Business Studies	25
Graduate Diploma in Applied Business and Management*	24
Postgraduate Diploma in Management	24
Master of Management	24

FOUNDATION

New Zealand Certificate in Study and Career Preparation (Level 3 or 4) [Engineering]	34
New Zealand Certificate in Study and Career Preparation (Level 3 or 4)	30
New Zealand Certificate in Study and Career Preparation (Level 4) [Social Services]	30

HOSPITALITY

New Zealand Certificate in Baking (Generalist) (Level 4)*	26
New Zealand Certificate in Cookery (Level 4)	26
New Zealand Diploma in Cookery (Advanced) (Level 5)	26
New Zealand Diploma in Hospitality Management (Level 5)	26

HOSPITALITY MANAGEMENT

Bachelor of Applied Business Studies	25
Bachelor of Applied Management	25
Bachelor of Applied Business and Management*	24
Graduate Diploma in Applied Business and Management*	24
Graduate Diploma in Applied Management	25
Master of Management	24
Postgraduate Diploma in Management	24

HUMAN RESOURCES

Bachelor of Applied Management	25
Bachelor of Applied Business and Management*	24
Graduate Diploma in Applied Business and Management*	24
Graduate Diploma in Applied Management	25

INFORMATION TECHNOLOGY

Bachelor of Information Technology	36
Graduate Diploma in Information Assurance and Security	36
Graduate Diploma in Information Technology	36
Postgraduate Diploma in Information Technology	37
Master of Information Technology	37

MANAGEMENT

Bachelor of Applied Business Studies	25
Bachelor of Applied Management	
Bachelor of Applied Business and Management*	24
Graduate Diploma in Applied Business Studies	25
Graduate Diploma in Applied Business and Management*	24
Graduate Diploma in Applied Management	25
Postgraduate Diploma in Management	24
Master of Management	24

MARKETING

Bachelor of Applied Business Studies	25
Bachelor of Applied Management	
Bachelor of Applied Business and Management*	24
Graduate Diploma in Applied Business and Management*	24
Graduate Diploma in Applied Management	25
Postgraduate Diploma in Management	24
Master of Management	24

MUSIC

Bachelor of Creativity (Music)	19
--------------------------------	----

NURSING

Bachelor of Nursing	30
Master of Professional Practice	30
New Zealand Certificate in Study and Career Preparation (Level 3 and 4)	30
Postgraduate Diploma in Professional Practice	30

PARAMEDIC

Bachelor of Health Science (Paramedic)	30
--	----

PERFORMING ARTS

Bachelor of Creativity (Performing Arts)	20
--	----

PHOTOGRAPHY

Bachelor of Creativity (Visual Arts)	21
Graduate Diploma in Creative Technologies	18
New Zealand Certificate in Creativity (Level 4)	18

POSTGRADUATE

Master of Information Technology	37
Master of Management	24
Master of Professional Practice	30
Postgraduate Diploma in Information Technology	37
Postgraduate Diploma in Management	24
Postgraduate Diploma in Professional Practice	30

PROFESSIONAL PRACTICE

Postgraduate Diploma in Professional Practice	30
Master of Professional Practice	30

PUBLISHING

Graduate Diploma in Publishing (Applied)	20
--	----

QUANTITY SURVEYING

New Zealand Diploma in Construction (Quantity Surveying) (Level 6)	40
--	----

SOCIAL AND COMMUNITY WORK

Bachelor of Social Work	37
New Zealand Certificate in Study and Career Preparation (Level 3 and 4)	36
Master of Professional Practice	37
Postgraduate Diploma in Professional Practice	36

TEACHING (EARLY CHILDHOOD EDUCATION)

Bachelor of Teaching (Early Childhood Education)	31
--	----

TOURISM

New Zealand Diploma in Tourism and Travel (Level 5)	27
---	----

VISUAL ARTS AND DESIGN

Bachelor of Creativity (Digital Media)	21
Bachelor of Creativity (Visual Arts)	21
Graduate Diploma in Creative Technologies	18
New Zealand Certificate in Creativity (Level 4)	18
New Zealand Diploma in Creativity (Level 5)	18
New Zealand Diploma in Creativity (Level 6)	18



Our campuses

Auckland campus

450 Queen Street
Auckland City

Petone campus

21 Kensington Avenue
Petone

Porirua campus

3 Wi Neera Drive
Porirua

Te Kāhui Auaha

65 Dixon Street
Wellington City

Wellington campus

15 Dixon Street
Wellington City

Wellington School of Construction

18 Western Hutt Road
Petone

Wellington School of Hospitality

52 Cuba Street
Wellington City

For more information on our
campuses check out our websites:

www.weltec.ac.nz

www.whitireia.ac.nz

www.teauaha.com

WelTec and Whitireia are strategic partners
delivering more choice to students

WelTec and Whitireia are:



Disclaimer – The information in this prospectus describes the programmes we intend to offer in 2019, and is correct at the time of printing, December 2018. Programmes and details may change. Some programmes are dependent on formal approval, government funding or the number of enrolments. Please check the relevant website or contact us for the latest information.

www.weltec.ac.nz
+64 4 920 2505
international@weltec.ac.nz



www.whitireia.ac.nz
+64 4 237 3100
international@whitireia.ac.nz

