

International Prospectus 2024

Southern Institute of Technology | Te Pūkenga
– New Zealand Institute of Skills and Technology

www.sit.ac.nz/international



SIT

is now part of
Te Pūkenga



Te Pūkenga
New Zealand

tepukenga.ac.nz



Content

Welcome to Te Pūkenga	4
About Te Pūkenga	6
Why study in New Zealand?	6
Our commitment to pastoral care	7
Life in and around Invercargill & Southland	9
Our campuses	10
Invercargill & Queenstown Campus	11
Accommodation	12
Invercargill Accommodation	12
Queenstown Accommodation	13
Support services	14
Qualification levels	15
Our programmes	16
Masters Degrees	17
Postgraduate Diplomas	17
Graduate Diplomas	18
Bachelors Degrees	20
Diplomas / New Zealand Diplomas	22
Foundation programmes	24
General English	24
How to apply	25
Main campuses across New Zealand	26

Disclaimer The information contained in this Prospectus is correct at the time of production (Date to go here). SIT | Te Pūkenga reserves the right to cancel or postpone any of the programmes, and shall not be liable for any claim other than the proportion of programme fees that the cancelled portion bears. Some programmes may be dependent upon formal approval from NZQA (New Zealand Qualifications Authority), TEC (Tertiary Education Commission) funding allocation, and the number of enrolments. As part of the NZQA targeted review of all Level 1-6 New Zealand qualifications, there may still be changes to some programmes starting in 2024. Fees, programmes, entry and selection criteria, and dates, are subject to change. Please check the relevant programme pages at www.sit.ac.nz for up-to-date information and full entry regulations before applying to enrol. Information regarding English language requirements is available on each course page at www.sit.ac.nz.

Nau mai haere mai ki Te Pūkenga

Welcome to Te Pūkenga

A national network of integrated learning in Aotearoa New Zealand, providing applied and vocational education and training that works with you, for you.



Te Pūkenga

New Zealand



TOI-OHOMAI



Kia ora huihui mai tātou

Welcome



It's my pleasure to provide an introduction in this 2024 International Prospectus and welcome you to Te Pūkenga, nei te reo rāhiri e rere atu ana – nau piki mai, nau kake mai ki Te Pūkenga.

The vocational education system in Aotearoa New Zealand is designed for the fast-changing future of skills, learning and work.

Te Pūkenga, New Zealand Institute of Skills and Technology, offers learners a national network of education and training opportunities that give you choice and flexibility about what you study, where you study and the best way for you to learn.

Regardless of which region you study in, you will gain a qualification from a national institution.

New Zealand's teaching style and practical, hands-on way of learning gives graduates strong employability skills — attributes valued by employers across a wide range of jobs and careers.

At Te Pūkenga, you will gain an education that is strongly aligned to the changing skills needs of industries and employers. Your studies may include work placements and industry projects, which will make you work-ready as soon as you graduate – ultimately increasing your opportunities for success.

You'll also gain a qualification that is recognised and respected around the world. New Zealand was ranked the top English-speaking country at preparing students for the future by The Economist Intelligence Unit in 2019.

One of New Zealand's most important values is manaakitanga – a Māori word meaning hospitality and kindness. You'll be given a warm welcome and the support you need to achieve your goals.

Mā te kimi ka kite, mā te kite ka mōhio, mā te mōhio ka mārama. Seek and discover, discover and know, know and become enlightened.

If you have any questions or want to find out more about Te Pūkenga, visit our website tepukenga.ac.nz or email us at info@tepukenga.ac.nz – we'd love to hear from you.

Peter Winder
Tumuaki | Chief Executive

Te Pūkenga – New Zealand Institute of Skills and Technology

About Te Pūkenga

We're a network of New Zealand's 16 state-owned Institutes of Technology and Polytechnics (ITPs) and nine Industry Training Organisations (ITOs) that operate as a single national institution, Te Pūkenga – New Zealand Institute of Skills and Technology.

As the country's largest education provider, our network delivers world-class tertiary level education focused on vocational and applied learning, from certificate through to PhD level.

Our high quality vocational and applied learning experience is delivered within the unique New Zealand context that values diversity and inclusion and delivers premium experiences to international learners.

Why study in New Zealand?

Gain work skills and qualifications in New Zealand to prepare for the future.

Vocational education in New Zealand

Learning with us will give you relevant work skills, real-world experience and globally recognised qualifications.

Focussed on the future

Study in New Zealand and you'll gain qualifications that are recognised and respected around the world. New Zealand was ranked the top English-speaking country at preparing students for the future by The Economist Intelligence Unit in 2019.

Real-world skills

You'll increase your employability by gaining relevant skills and hands-on experience in your industry. Employers help to create our courses and programmes, so you can be confident you're getting the right skills for the right jobs.

Flexible learning

Learning in New Zealand takes place at work as well as on campus and online. Your studies may include internships, work placements and industry projects. You'll gain experience in your industry, make contacts, and be ready to work as soon as you graduate.

Welcoming and supportive

One of New Zealand's most important values is manaakitanga - a Māori word meaning hospitality and kindness. You'll be given a warm welcome and the support you need to achieve your goals.



Ready for work

Working while you study

If you have a student visa, you may be able to work for up to 20 hours a week during the term and full-time during holidays.

Working after studying

You may be able to apply for a visa to work for up to three years in New Zealand after you graduate, depending on what you study and where you study.

Jobs in high demand

Discover what work skills are in high demand in the New Zealand job market. If you gain the skills we need, you may be able to work here after graduating.

Our commitment to pastoral care



The safety and wellbeing of all our learners is important to us. We have a wide range of support systems, services and resources available to ensure our international students are cared for and supported during their time with us.

We're required by law to meet New Zealand's International and Domestic Pastoral Care Code, (the Code) which applies to all registered tertiary providers across the country. This is administered and monitored by the New Zealand Qualifications Authority (NZQA).

An updated Code came into effect in January 2022 which mandates one set of clear rules and expectations for embedding safety and wellbeing into systems and day-to-day practices – tailored to learners' needs.

Here's a summary of the Code as it relates to international students.

Tertiary providers should ensure international students:

- are protected and supported from when they leave their home country, to when they finish their education journey
- are aware of their rights and protections
- feel safe and happy while studying in New Zealand
- are provided correct information through agents, who act professionally
- are aware of the terms and conditions of their enrolment.

Get a copy

View and download the Code here
nzqa.govt.nz/providers-partners/tertiary-and-international-learners-code



Life in and around Invercargill & Southland

Southland – a genuine Kiwi experience!
Southland is New Zealand's southern most province and is a region of rich natural contrasts, beauty and wildlife, boasting quality tourist destinations.

The population of Southland numbers around 100,000 people who have an international reputation for being incredibly hospitable to visitors coming to the region.

Primarily an agricultural economy, Southland has gained a top reputation nationwide as a region for producing innovative, high quality, tertiary education programmes.

Invercargill, the capital city of Southland, has a population of 55,000. It is big enough to cater for your lifestyle needs, yet small enough to provide a stable and friendly atmosphere in which to focus on your study.

Invercargill is situated on the southern coast of New Zealand. The commercial heart of Southland, it is a flat, spacious place, where it is easy to find your way around and enjoy a variety of shops, restaurants and cafes. Accommodation and living costs are considerably lower than in other major cities in New Zealand.

Invercargill is the gateway to popular tourist destinations such as Queenstown, Stewart Island and Catlins, which are all within driving distance for a good day out and a return trip before evening. Few regions in New Zealand can better the diversity of mountains, lakes and fiords, historic gold mining towns and lush countryside that Southland has to offer.

What you can expect if you choose to study in Invercargill:

- Affordable Accommodation close to campus
- Free Parking around campus.
- The opportunity to forge lifelong friendships
- Access to world-class sport and recreation facilities
- Clubs and societies to join for almost any interest
- Easily accessible health and family services
- Friendly and welcoming community
- Safe and supportive environment for students





Our campuses

SIT | Te Pūkenga – New Zealand Institute of Skills and Technology is Aotearoa New Zealand’s largest tertiary institution and the 35th largest provider of tertiary education in the world.

Established in 2020, Te Pūkenga has a national footprint of 163 campuses across all regions in Aotearoa New Zealand, and brings together on-campus, online, offshore, and work-based education and training for 240,000 ākonga (learners) through a unified, regional network of provision.

Te Pūkenga brings the size, scale, skills and expertise of an internationally significant tertiary education provider to provide applied and vocational higher education and training.

We’re focused on creating a high-value future for ākonga (learners) and Aotearoa New Zealand through outstanding international education, global connectedness, providing excellent education outcomes, improving student experience and wellbeing and putting the learner at the centre of everything we do.

We can help create global citizens with the future-focused knowledge, skills and cultural competence needed to succeed anywhere in the world.

Southland needs you

SIT | Te Pūkenga still offers the same benefits as we did before this transformation and continues to engage in international student recruitment to meet the needs of Southland. Our local communities welcome international students and their families as you bring diversity and support local businesses and skills needs.

Accredited and Approved

SIT | Te Pūkenga’s programmes are accredited and approved by NZQA from certificate up to master degree level. We have over 200 programmes across a wide range of subject areas. Our programmes range from short courses, certificates, diplomas, undergraduate degrees and postgraduate qualifications, up to masters degrees.

Code of practice compliant

SIT | Te Pūkenga is signatory to the Education (Pastoral Care of Tertiary and International Learners) Code of Practice 2021. The SIT international team and key staff across the institute are all trained in the Code of Practice regulations.



Invercargill Campus

SIT | Te Pūkenga's main campus is located at 133 Tay Street, Invercargill.

On campus facilities include a student gym, bookshop and cafe, and support services such as a health nurse, counsellor, chaplain, learning assistance centre, disability liaison, lwi liaison and Pacific Island liaison.

Te Rau o te Huia is the latest addition to SIT | Te Pūkenga's innovative solutions to education, housing our Creative Arts programmes including Screen Arts, Music, Photography and Film Making. This state-of-the-art building has been designed and created around a 160 year old historic Church integrating the old with the new.

One of the greatest things about Invercargill is the relatively low cost of living. If you're intending to go flatting, you can expect to find a good, warm house from \$140 upwards per room, per week (plus expenses).

Invercargill's world-class sporting facilities include indoor cycling velodrome (SIT ZeroFees Velodrome), brand new water-based hockey turfs on par with the Beijing Olympics, an Olympic-size swimming pool and a huge indoor stadium.

As well as having numerous beautiful parks and gardens within the city, Invercargill is the gateway to some of New Zealand's most beautiful scenery and destinations including the Southland heartland, Stewart Island, Fiordland, the Catlins and Central Otago.



Queenstown Campus

SIT | Te Pūkenga's Queenstown campus provides an unique opportunity to study in New Zealand's world-famous adventure tourism capital.

Advance your career in hospitality, tourism, business, information technology, health and wellbeing, cookery and hospitality while enjoying the superb Queenstown lifestyle.

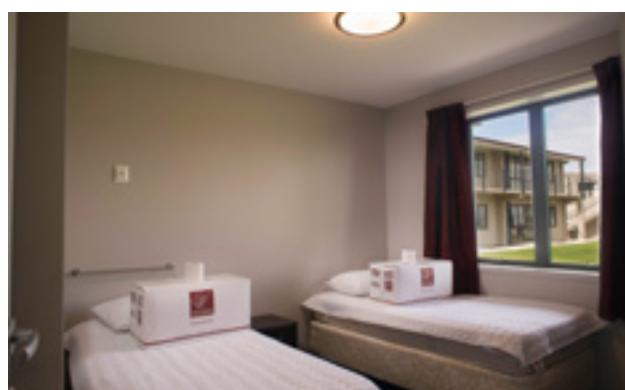
SIT | Te Pūkenga's expanding Queenstown Campus (established 2009) is conveniently located in the Remarkables Park Town Centre at Frankton, with the spectacular backdrop of the Remarkables mountain ranges. Our modern facilities provide an exceptional teaching environment; new purpose built spaces, magnificent views, ample parking and is easily accessible by public transport.

Our programmes link strongly with local industry, providing a number of opportunities to engage with employers and industry experts. Our academic staff are drawn from industry, with most still working in their fields, helping bring real life experiences to the classroom.

With countless hotels, resorts and luxury retreats in and around Queenstown - not to mention a host of adventure and hospitality businesses - there are a number of employment options for students.

SIT | Te Pūkenga Queenstown brings you the opportunity to enjoy the adventurous Queenstown lifestyle, whilst studying towards an industry recognised qualification.

Accommodation



Invercargill

Whatever your budget or preferred living environment, Invercargill has a range of approved accommodation options to choose from.

SIT | Te Pūkenga has invested in the welfare of our students by owning several accommodation units across Invercargill and also in Queenstown. Accommodation is booked when you send your flight details to us. Please be advised that you may be allocated any one of the options mentioned below, which will depend on what is available at the time of booking.

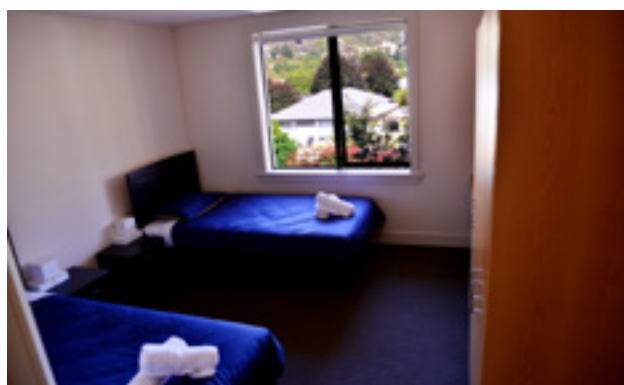
We understand that moving to a new country can be challenging. We make it easier for you by ensuring you have a safe, warm and comfortable place to stay on your arrival. All of our accommodation are fully furnished with utensils and white ware supplied. Students will receive their first two weeks of accommodation free*, shared bedroom basis. Student also get an Accommodation Welcome Pack consisting of; a set of sheets, mattress protector, pillow, pillow case, duvet, towels, face cloths and a food parcel for your first breakfast. All units have common areas such as shared living spaces, kitchen & dining, bathrooms with separate communal laundries on site.

You can also live with a Kiwi family in a homestay, which will help you settle into the New Zealand culture easily. Even with a homestay host, you don't need to worry about the first two weeks: your accommodation is on us! **

Room type and facilities	Indicative price per week
Sharing students	\$150
Single Room	\$240
Couple	\$280
Couple with child	\$300
Family Unit	\$400
Homestay (Single)	\$300

Extra information for both Campuses:

- Bond - Each student will be required to pay a \$400 deposit and 4 weeks rent in advance
- Power is included in the rent
- Free wifi
- Single rooms may be booked, but this is subject to availability
- Prices displayed are applicable from 1 January 2023



Queenstown

Located in close proximity to SIT | Te Pūkenga's Queenstown campus in Frankton, the SIT | Te Pūkenga Queenstown Apartments are just 5 minutes drive from the Queenstown Airport.

Consisting of 9 units, these modern, state of the art units all have three bedrooms with ensuite bathrooms, shared living, kitchen and dining areas. Each unit also has their own laundry area with a washing machine and dryer. The units are made up 3 Double furnished rooms each.

Room type and facilities	Indicative price per week
Sharing students	\$180
Single Room	\$270
Couple	\$370

For more information email
accommodation@sit.ac.nz

*Conditions Apply

** Homestay is for 4 week minimum

Support services

Accident Insurance

The Accident Compensation Corporation (ACC) provides accident insurance for all New Zealand citizens, residents, and temporary visitors to New Zealand, but you may still be liable for other medical and related costs. Further information can be viewed on the ACC website at www.acc.co.nz

Code of Practice

SIT I Te Pūkenga has agreed to observe and be bound by the Education (Pastoral Care of Tertiary and International Learners) Code of Practice 2021. Copies of the Code are available from the New Zealand Qualification Authority website at www.nzqa.govt.nz/providers-partners/tertiary-and-international-learners-code/

Eligibility for Health Services

Most international students are not entitled to publicly funded health services while in New Zealand. If you receive medical treatment during your visit, you may be liable for the full costs of that treatment. Full details or entitlements to publicly funded health services are available through the Ministry of Health, and can be viewed on their website at www.moh.govt.nz

Medical and Travel Insurance

International students (including group students) must have appropriate and current medical and travel insurance while in New Zealand. SIT I Te Pūkenga automatically organises insurance for mainstream students through the resource fee. SIT will also organise insurance for English language students and students on exchange programmes, at an additional cost.

NZQA Complaint Process

If your education provider has not resolved your complaint, and you still wish to have it resolved, then you can contact NZQA.

NZQA is a government organisation. They can provide an independent assessment of your complaint.

You can submit your complaint query on the NZQA website, or send an email to risk@nzqa.govt.nz. If you need more information on the complaints process, visit at [www.nzqa.govt.nz/providers-](http://www.nzqa.govt.nz/providers-partners/tertiary-and-international-learners-code-know-the-code/learner-complaints)

Visas and Immigration

Full details of immigration requirements, advice on rights to employment in New Zealand while and after studying are available from Immigration New Zealand, and can be viewed on their website at www.immigration.govt.nz

Refunds

It is important that you read SIT I Te Pūkenga's refund policy, available at www.sit.ac.nz. Each request for refund is decided on its individual merits and there is no automatic right to a refund of fees if you change your mind about studying at SIT I Te Pūkenga.

Disclaimer

While the information provided in this document was true and correct at the time of publication, SIT I Te Pūkenga reserves the right to alter or discontinue programmes, procedures, fees and regulations at any given time without notice. Unless indicated otherwise, information in this brochure relates to SIT I Te Pūkenga's Invercargill campus. Students should carefully read all official correspondence and other sources of information for students, such as our website, to be aware of changes to the information contained in this document.

Got a question?

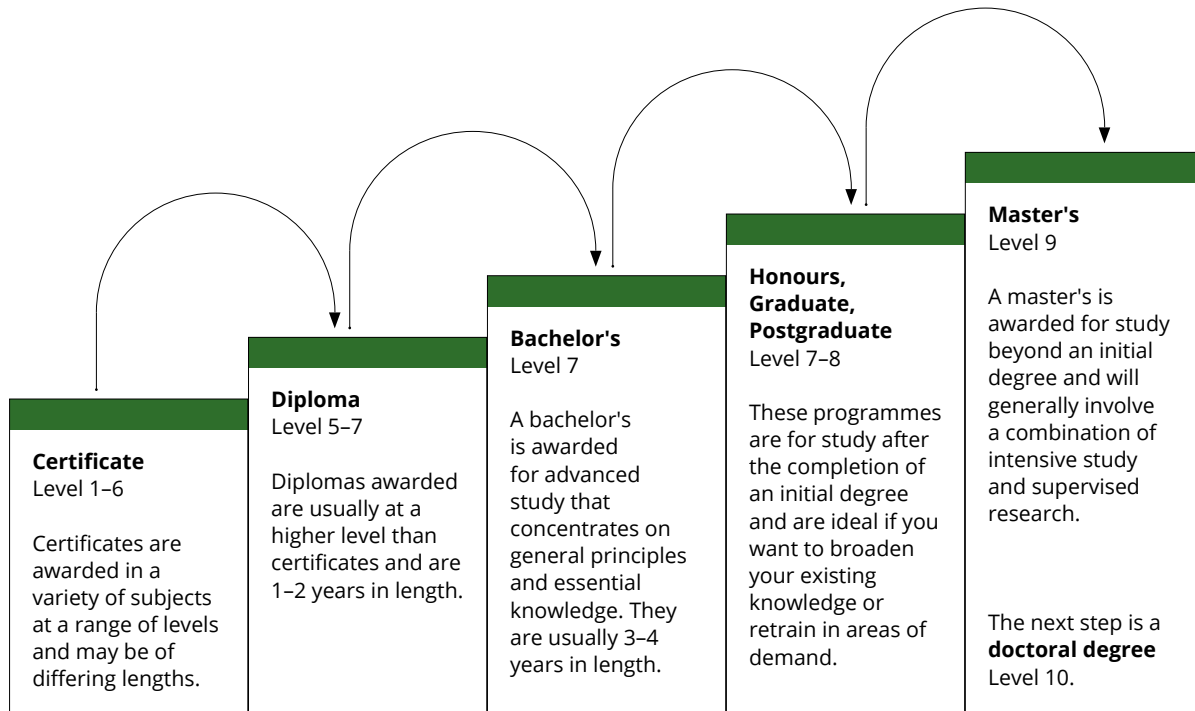
Look at our frequently asked questions section on the international page on our website: www.sit.ac.nz
Or Email - international@sit.ac.nz

[partners/tertiary-and-international-learners-code-know-the-code/learner-complaints](http://www.sit.ac.nz/providers-partners/tertiary-and-international-learners-code-know-the-code/learner-complaints) or contact NZQA on 0800 697296

iStudent Complaints is available to help you resolve financial or contractual disputes with your education provider. There is no cost to you for this service. iStudent Complaints is an independent service with experience in helping people to resolve disputes. You can contact iStudent Complaints via their website www.istudent.org.nz or on 0800 00 66 75.

Qualification levels

The New Zealand Qualifications Framework (NZQF) is comprised of ten levels and covers a range of qualifications from certificates to doctoral degrees. The levels are based on how complex the learning is; with one being the most basic, through to ten being the most complex.





Our programmes

We offer a range of degrees, pathways and programmes, that have been created with academic and business experts for the purpose of making you an employable graduate. Additionally, our programmes are tailored to the specific needs of international students.

Classes are taught in English but there are staff available who speak other languages if you need some extra support.

All of our programmes are offered in February, with some also offered in additional months, as noted in the “Intakes” column. Please see our website www.sit.ac.nz or contact us at international.applications@sit.ac.nz.

Master's Degrees

Academic entry requirements: Degree holders and/or applicants who can demonstrate equivalent practical, professional or educational experience in a related discipline may also be considered.

Programme	NZQA Level	Duration	Intakes	English Requirement	Additional Requirements	Te Pūkenga S2 2023 Fees NZ\$ (inclusive study grant)	Resource Fee NZ\$	Total Fee NZ\$ (incl resource fee) Per 18 academic months
Master of Applied Management	9	1 1/2 years (18 academic months)	Feb, Jun & Oct	IELTS Test - Academic score of 6.5 with no band score lower than 6 Pearson Test of English - PTE (Academic) score of 58 with no band score lower than 50	Bachelor's degree or graduate diploma or postgraduate certificate or postgraduate diploma with at least a B grade average at level 7 or higher.	38,750	1,200	39,950
Master of Applied Health Sciences (Wellness and Rehabilitation)	9	1 1/2 years (18 academic months)	Feb & Jul	IELTS Test - Academic score of 6.5 with no band score lower than 6 Pearson Test of English - PTE (Academic) score of 58 with no band score lower than 50	Students will have completed all requirements of a bachelor's degree or graduate diploma in a relevant field (such as chiropractic, health sciences, massage therapy, medicine, naturopathy, nursing, occupational therapy, osteopathy, physiotherapy, sport and exercise) with at least a B average at Level 7 or higher.	38,750	1,200	39,950
Master of Information Technology	9	1 1/2 years (18 academic months)	Feb & Jul	IELTS Test - Academic score of 6.5 with no band score lower than 6 Pearson Test of English - PTE (Academic) score of 58 with no band score lower than 50	Bachelor's degree or graduate diploma or postgraduate certificate or postgraduate diploma in information technology or related subject with at least a B grade average at level 7 or higher.	38,750	1,200	39,950
Master of Nursing Science	9	1 1/2 years (18 academic months)	Feb & Jul	IELTS Test - Academic score of 6.5 with no band score lower than 6 Pearson Test of English - PTE (Academic) score of 58 with no band score lower than 50	Students must hold New Zealand Nursing Registration prior to submitting application for study	38,750	1,200	39,950

Postgraduate Diplomas

Academic entry requirements: Degree holders and/or applicants who can demonstrate equivalent practical, professional or educational experience in a related discipline may also be considered.

Programme	NZQA Level	Duration	Intakes	English Requirement	Additional Requirements	Te Pūkenga S2 2023 Fees NZ\$ (inclusive study grant)	Resource Fee NZ\$	Total Fee NZ\$ (incl resource fee) Per 12 academic months
Postgraduate Diploma in Applied Management	8	1 year	Feb, Jun & Oct	IELTS Test - Academic score of 6.5 with no band score lower than 6 Pearson Test of English - PTE (Academic) score of 58 with no band score lower than 50	Bachelor's degree or graduate diploma or postgraduate certificate or related subject with at least a B grade average at level 7 or higher.	27,500	1,000	28,500
Postgraduate Diploma in Applied Health Sciences (Wellness and Rehabilitation)	8	1 year	Feb & Jul	IELTS Test - Academic score of 6.5 with no band score lower than 6 Pearson Test of English - PTE (Academic) score of 58 with no band score lower than 50	Students will have completed all requirements of a bachelor's degree or graduate diploma in a relevant field (such as chiropractic, health science, massage therapy, medicine, naturopathy, nursing, occupational therapy, osteopathy, physiotherapy, sport and exercise) with at least a B grade average at Level 7.	27,500	1,000	28,500
Postgraduate Diploma in Information Technology	8	1 year	Feb & Jul	IELTS Test - Academic score of 6.5 with no band score lower than 6 Pearson Test of English - PTE (Academic) score of 58 with no band score lower than 50	Bachelor's degree or graduate diploma in information technology or related subject with at least a B grade average at level 7 or higher.	27,500	1,000	28,500

Graduate Diplomas

Academic entry requirements: Applicants must hold a relevant degree.

Programme	NZQA Level	Duration	Intakes	English Requirement	Additional Requirements	Te Pūkenga S2 2023 Fees NZ\$ (inclusive study grant)	Resource Fee NZ\$	Total Fee NZ\$ (incl resource fee) Per 12 academic months
Graduate Diploma in Accounting	7	1 year	Feb	IELTS Test - Academic score of 6.0 with no band score lower than 5.5 Pearson Test of English - PTE (Academic) score of 50 with no band score lower than 42	None	25,000	1,000	26,000
Graduate Diploma in Architectural Technology	7	1 year	Feb	IELTS Test - Academic score of 6.0 with no band score lower than 5.5 Pearson Test of English - PTE (Academic) score of 50 with no band score lower than 42	Evidence of minimum of 3 years relevant work experience in a responsible position completing drawings and relevant documentation	25,000	1,000	26,000
Graduate Diploma in Audio Production	7	1 year	Feb	IELTS Test - Academic score of 6.0 with no band score lower than 5.5 Pearson Test of English - PTE (Academic) score of 50 with no band score lower than 42	2 references	25,000	1,000	26,000
Graduate Diploma in Contemporary Music	7	1 year	Feb	IELTS Test - Academic score of 6.0 with no band score lower than 5.5 Pearson Test of English - PTE (Academic) score of 50 with no band score lower than 42	Applicants looking to specialise in practical performance need to provide a high quality CD or music video	25,000	1,000	26,000
Graduate Diploma in Construction (Quantity Surveying)	7	1 year	Feb	IELTS Test - Academic score of 6.0 with no band score lower than 5.5 Pearson Test of English - PTE (Academic) score of 50 with no band score lower than 42	Evidence of minimum of 3 years relevant work experience in a responsible position in the building construction industry	25,000	1,000	26,000
Graduate Diploma in Engineering Technology – (Major In Mechanical / Civil)	7	1 year	Feb	IELTS Test - Academic score of 6.0 with no band score lower than 5.5 Pearson Test of English - PTE (Academic) score of 50 with no band score lower than 42	Evidence of minimum of 3 years relevant work experience in a responsible position in the engineering industry	29,500	1,000	30,500
Graduate Diploma in Environmental Management	7	1 year	Feb & Jul	IELTS Test - Academic score of 6.0 with no band score lower than 5.5 Pearson Test of English - PTE (Academic) score of 50 with no band score lower than 42	None	25,000	1,000	26,000
Graduate Diploma in Event Management	7	1 year	Feb, April, July, Sept	IELTS Test - Academic score of 6.0 with no band score lower than 5.5 Pearson Test of English - PTE (Academic) score of 50 with no band score lower than 42	None (Available at Queenstown campus only)	25,000	1,000	26,000
Graduate Diploma in Information Technology	7	1 year	Feb	IELTS Test - Academic score of 6.0 with no band score lower than 5.5 Pearson Test of English - PTE (Academic) score of 50 with no band score lower than 42	Students will have completed all requirements of a bachelor's degree or graduate diploma in a relevant field	25,000	1,000	26,000

Programme	NZQA Level	Duration	Intakes	English Requirement	Additional Requirements	Te Pūkenga S2 2023 Fees NZ\$ (inclusive study grant)	Resource Fee NZ\$	Total Fee NZ\$ (incl resource fee) Per 12 academic months
Graduate Diploma in Hotel Management	7	1 year	Invercargill Feb & Jul	IELTS Test - Academic score of 6.0 with no band score lower than 5.5 Pearson Test of English - PTE (Academic) score of 50 with no band score lower than 42	None (Available at Invercargill and Queenstown campuses)	25,000	1,000	26,000
			Queenstown Mar, May, Jul, Sep & Dec					
Graduate Diploma in Management	7	1 year	Feb & Jul	IELTS Test - Academic score of 6.0 with no band score lower than 5.5 Pearson Test of English - PTE (Academic) score of 50 with no band score lower than 42	None	25,000	1,000	26,000
Graduate Diploma in Marketing	7	1 year	Feb & Jul	IELTS Test - Academic score of 6.0 with no band score lower than 5.5 Pearson Test of English - PTE (Academic) score of 50 with no band score lower than 42	None	25,000	1,000	26,000
Graduate Diploma in Professional Accounting	7	1 year	Feb & Jul	IELTS Test - Academic score of 6.0 with no band score lower than 5.5 Pearson Test of English - PTE (Academic) score of 50 with no band score lower than 42	Evidence of minimum of 3 years relevant work experience	25,000	1,000	26,000
Graduate Diploma in Screen Arts (3D Animation)	7	1 year	Feb	IELTS Test - Academic score of 6.0 with no band score lower than 5.5 Pearson Test of English - PTE (Academic) score of 50 with no band score lower than 42	Portfolio of work including examples of freehand drawings and a digital portfolio/showreel showcasing digital storytelling skills. Please visit www.sit.ac.nz for full details on the portfolio requirements. Telephone/Skype interviews may be required. Handwritten statement.	25,000	1,000	26,000
Graduate Diploma in Screen Arts (Filmmaking)	7	1 year	Feb	IELTS Test - Academic score of 6.0 with no band score lower than 5.5 Pearson Test of English - PTE (Academic) score of 50 with no band score lower than 42	Portfolio of work including examples of film and photographic work. Please visit www.sit.ac.nz for full details on the portfolio requirements. Telephone/Teams interviews may be required. Handwritten statement.	25,000	1,000	26,000
Graduate Diploma in Visual Media	7	1 year	Feb	IELTS Test - Academic score of 6.0 with no band score lower than 5.5 Pearson Test of English - PTE (Academic) score of 50 with no band score lower than 42	Portfolio of work including examples of freehand drawings and a digital portfolio/showreel showcasing digital storytelling skills. Please visit www.sit.ac.nz for full details on the portfolio requirements. Telephone/Teams interviews may be required.	25,000	1,000	26,000
Graduate Diploma in Sport and Exercise	7	1 year	Feb & Jul	IELTS Test - Academic score of 6.0 with no band score lower than 5.5 Pearson Test of English - PTE (Academic) score of 50 with no band score lower than 42	None	25,000	1,000	26,000

Bachelor's Degrees

Academic entry requirements: Overseas qualification equivalent to university entrance and/or applicants with evidence of relevant prior learning and work experience.

Programme	NZQA Level	Duration	Intakes	English Requirement	Additional Requirements	Te Pūkenga S2 2023 Fees NZ\$ (inclusive study grant)	Resource Fee NZ\$	Total Fee NZ\$ (incl resource fee) per 12 academic months
Bachelor of Accounting	7	3 years	Feb & Jul	IELTS Test - Academic score of 6.0 with no band score lower than 5.5 Pearson Test of English - PTE (Academic) score of 50 with no band score lower than 42	None	25,000	1,000	26,000
Bachelor of Architectural Technology	7	3 years	Feb	IELTS Test - Academic score of 6.0 with no band score lower than 5.5 Pearson Test of English - PTE (Academic) score of 50 with no band score lower than 42	None	25,000	1,000	26,000
Bachelor of Audio Production	7	3 years	Feb	IELTS Test - Academic score of 6.0 with no band score lower than 5.5 Pearson Test of English - PTE (Academic) score of 50 with no band score lower than 42	None	25,000	1,000	26,000
Bachelor of Commerce	7	3 years	Feb & Jul	IELTS Test - Academic score of 6.0 with no band score lower than 5.5 Pearson Test of English - PTE (Academic) score of 50 with no band score lower than 42	None	25,000	1,000	26,000
Bachelor of Contemporary Music	7	3 years	Feb	IELTS Test - Academic score of 6.0 with no band score lower than 5.5 Pearson Test of English - PTE (Academic) score of 50 with no band score lower than 42	All applicants must provide a high quality CD or DVD showcasing an audition performance. Telephone/Skype interviews may be required.	25,000	1,000	26,000
Bachelor of Environmental Management	7	3 years	Feb & Jul	IELTS Test - Academic score of 6.0 with no band score lower than 5.5 Pearson Test of English - PTE (Academic) score of 50 with no band score lower than 42	None	25,000	1,000	26,000
Bachelor of Hotel Management	7	3 years	Feb & Jul	IELTS Test - Academic score of 6.0 with no band score lower than 5.5 Pearson Test of English - PTE (Academic) score of 50 with no band score lower than 42	None (Available at Invercargill and Queenstown campuses)	25,000	1,000	26,000
Bachelor of Information Technology	7	3 years	Feb & Jul	IELTS Test - Academic score of 6.0 with no band score lower than 5.5 Pearson Test of English - PTE (Academic) score of 50 with no band score lower than 42	Applicants with evidence of relevant prior learning and work experience are encouraged to apply.	25,000	1,000	26,000

Programme	NZQA Level	Duration	Intakes	English Requirement	Additional Requirements	Te Pūkenga S2 2023 Fees NZ\$ (inclusive study grant)	Resource Fee NZ\$	Total Fee NZ\$ (incl resource fee) per 12 academic months
Bachelor of Nursing	7	3 years	Feb	IELTS Test - Academic score of 6.5 in all bands Pearson Test of English - PTE (Academic) score of 58 with no band score lower than 50	Applicants must have satisfactory physical and mental health that enables them to undertake clinical practice. Telephone/Skype interviews may be required.	28,000	1,000	29,000
Bachelor of Screen Arts (with majors in Animation, Concept Art and Design, Film and Game Art and Design)	7	3 years	Feb	IELTS Test - Academic score of 6.0 with no band score lower than 5.5 Pearson Test of English - PTE (Academic) score of 50 with no band score lower than 42	Portfolio of work, including examples of freehand drawings and latest artwork. Please visit www.sit.ac.nz for full details on the portfolio requirements. Telephone/Teams interviews may be required.	25,000	1,000	26,000
Bachelor of Sport and Exercise	7	3 years	Feb & Jul	IELTS Test - Academic score of 6.0 with no band score lower than 5.5 Pearson Test of English - PTE (Academic) score of 50 with no band score lower than 42	Pre-entry testing may be required. Prior learning should be at NZQA level 4 standard. Telephone/Skype interviews may be required.	25,000	1,000	26,000
Bachelor of Therapeutic and Sports Massage	7	3 years	Feb	IELTS Test - Academic score of 6.0 with no band score lower than 5.5 Pearson Test of English - PTE (Academic) score of 50 with no band score lower than 42	Pre-entry testing may be required. Prior learning should be at NZQA level 4 standard. Telephone/Skype interviews may be required.	25,000	1,000	26,000

“The tutors are really friendly and they helped me to finish successfully. I learned a lot coming here”.

Shanaka Fernando
Bachelor of Information
Technology Graduate



Diplomas / New Zealand Diplomas

Programme	NZQA Level	Duration	Intakes	English Requirement	Additional Requirements	Te Pūkenga S2 2023 Fees NZ\$ (inclusive study grant)	Resource Fee NZ\$	Total Fee NZ\$ (incl resource fee) Per 12 academic months
Diploma in Culinary Excellence Level 5 (incorporating the New Zealand Diploma in Cookery (Advanced) (Level 5) With Strands in Cookery and Patisserie and the New Zealand Certificate in Cookery Level 3 and 4)	5	2 years	Feb & Jul	IELTS Test - Academic score of 5.5 with no band score lower than 5.0 Pearson Test of English - PTE (Academic) score of 42 with no band score lower than 36	Mature students are welcome to apply. All applicants must be prepared to meet the work ethic required for a career in the hospitality industry. (Available at Invercargill and Queenstown campuses)	25,000	1,000	26,000
New Zealand Diploma in Animation	5	1 year	Feb	IELTS Test - Academic score of 5.5 with no band score lower than 5.0 Pearson Test of English - PTE (Academic) score of 42 with no band score lower than 36	Portfolio of work including examples of freehand drawings and latest artwork. Please visit www.sit.ac.nz for full details on the portfolio requirements. Telephone/ Teams interviews may be required	25,000	1,000	26,000
New Zealand Diploma in Animation	6	1 year	Feb	IELTS Test - Academic score of 6.0 with no band score lower than 5.5 Pearson Test of English - PTE (Academic) score of 50 with no band score lower than 42	Portfolio of work including examples of freehand drawings and latest artwork. Please visit www.sit.ac.nz for full details on the portfolio requirements. Telephone/ Teams interviews may be required	25,000	1,000	26,000
New Zealand Diploma in Architectural Technology	6	2 years	Feb	IELTS Test - Academic score of 6.0 with no band score lower than 5.5 Pearson Test of English - PTE (Academic) score of 50 with no band score lower than 42	Four years secondary education. Mature students are welcome to apply	25,000	1,000	26,000
New Zealand Diploma in Business Accounting	5		Feb & Jul	IELTS Test - Academic score of 5.5 with no band score lower than 5.0 Pearson Test of English - PTE (Academic) score of 42 with no band score lower than 36	None	25,000	1,000	26,000
New Zealand Diploma in Construction (Quantity Surveying)	6	2 year	Feb	IELTS Test - Academic score of 6.0 with no band score lower than 5.5 Pearson Test of English - PTE (Academic) score of 50 with no band score lower than 42	Four years secondary education. Mature students are welcome to apply	25,000	1,000	26,000
New Zealand Diploma in Engineering (Civil/ Mechanical)	6	2 years	Feb	IELTS Test - Academic score of 6.0 with no band score lower than 5.5 Pearson Test of English - PTE (Academic) score of 50 with no band score lower than 42	Adequate literacy and numeracy and/or appropriate trades training	28,000	1,000	29,000
New Zealand Diploma in Enrolled Nursing	5	1 1/2 years	Feb	IELTS Test - Academic score of 6.5 in all bands Pearson Test of English - PTE (Academic) score of 58 with no band score lower than 50	High school graduates with Science, English, Chemistry and Biology. Students must have a current comprehensive First Aid certificate whilst training for the course (this can be obtained through SIT, Red Cross or St Johns). Telephone/Skype interviews may be required	37,500	1,500	38,500

Programme	NZQA Level	Duration	Intakes	English Requirement	Additional Requirements	Te Pūkenga S2 2023 Fees NZ\$ (inclusive study grant)	Resource Fee NZ\$	Total Fee NZ\$ (incl resource fee) Per 12 academic months
New Zealand Diploma in Hospitality Management	5	1 year	Feb & Jul	IELTS Test - Academic score of 5.5 with no band score lower than 5.0 Pearson Test of English - PTE (Academic) score of 42 with no band score lower than 36	18 years of age. Completed minimum four years' secondary education	25,000	1,000	26,000
New Zealand Diploma in Hospitality Management	6	1 year	Feb & Jul	IELTS Test - Academic score of 6.0 with no band score lower than 5.5 Pearson Test of English - PTE (Academic) score of 50 with no band score lower than 42	Successful completion of New Zealand Diploma in Hospitality Management (Level 5)	25,000	1,000	26,000
New Zealand Diploma in Tourism and Travel	5	1 year	Feb, Apr, Jul, Sept, Nov	IELTS Test - Academic score of 5.5 with no band score lower than 5.0 Pearson Test of English - PTE (Academic) score of 42 with no band score lower than 36	None (Available at Queenstown campus only)	25,000	1,000	26,000
New Zealand Diploma in Tourism & Travel (Southern Experience)	5		Feb & Jul	IELTS Test - Academic score of 5.5 with no band score lower than 5.0 Pearson Test of English - PTE (Academic) score of 42 with no band score lower than 36	None	25,000	1,000	26,000
New Zealand Diploma in Tourism and Travel	6	1 year	Feb, Apr, Jul, Sept, Nov	IELTS Test - Academic score of 6.0 with no band score lower than 5.5 Pearson Test of English - PTE (Academic) score of 50 with no band score lower than 42	Successful completion of New Zealand Diploma in Tourism and Travel (Queenstown) (Level 5) (Available at Queenstown campus only)	25,000	1,000	26,000
New Zealand Diploma in Web Development and Design	5	1 year	Feb	IELTS Test - Academic score of 5.5 with no band score lower than 5.0 Pearson Test of English - PTE (Academic) score of 42 with no band score lower than 36	None (Available at Queenstown campus only)	25,000	1,000	26,000
New Zealand Diploma in Software Development	6	1 year	Feb	IELTS Test - Academic score of 6.0 with no band score lower than 5.5 Pearson Test of English - PTE (Academic) score of 50 with no band score lower than 42	Successful completion of New Zealand Diploma in Web Development and Design (Level 5) (Available at Queenstown campus only)	25,000	1,000	26,000
New Zealand Diploma in Vet Nursing	6	2 years	Feb	IELTS Test - Academic score of 6.0 with no band score lower than 5.5 Pearson Test of English - PTE (Academic) score of 50 with no band score lower than 42	Adequate literacy and numeracy with relevant science subjects. Telephone/Skype interviews may be required.	25,000	1,000	26,000
New Zealand Diploma in Wellness and Relaxation Massage	5	1 year	Feb	IELTS Test - Academic score of 6.0 with no band score lower than 5.5 Pearson Test of English - PTE (Academic) score of 50 with no band score lower than 42	None	25,000	1,000	26,000
New Zealand Diploma in Remedial Massage	6	1 year	Feb	IELTS Test - Academic score of 6.0 with no band score lower than 5.5 Pearson Test of English - PTE (Academic) score of 50 with no band score lower than 42	A similar or equivalent qualification to the New Zealand Diploma in Wellness and Relaxation Massage Level 5	25,000	1,000	26,000

Foundation programmes

SIT offers a range of specialist foundation programmes to prepare you for success in our advanced qualifications. Choose from these specialist on-site programmes:

Programme	NZQA Level	Duration	Intakes	English Requirement	Additional Requirements	Te Pūkenga S2 2023 Fees NZ\$ (inclusive study grant)	Resource Fee NZ\$	Total Fee NZ\$ (incl resource fee) per 12 academic months
New Zealand Certificate in Digital Media and Design	3	19 weeks	Jul	IELTS Test - General or Academic score of 5.0 in all bands Pearson Test of English - PTE (Academic) score of 36 in all bands	None	12,500	500	13,000
New Zealand Certificate in Business (Small Business)	4	18 weeks	Jul	IELTS Test - General or Academic score of 5.0 in all bands Pearson Test of English - PTE (Academic) score of 36 in all bands	None	12,500	500	13,000
New Zealand Certificate in Food and Beverage Service	3	17 weeks	Feb & Jul	IELTS Test - General or Academic score of 5.0 in all bands Pearson Test of English - PTE (Academic) score of 36 in all bands	None	12,500	500	13,000
New Zealand Certificate in Study and Career Preparation (Health and Wellness Careers)	4	20 weeks	Feb & Jul	IELTS Test - Academic score of 6.5 in all bands Pearson Test of English - PTE (Academic) score of 58 with no band score lower than 50	None	12,500	500	13,000
New Zealand Certificate in Foundation Skills (Strand in Music and Music Technology)	2	20 weeks	Jul	IELTS Test - General or Academic score of 5.0 in all bands Pearson Test of English - PTE (Academic) score of 36 in all bands	None	12,500	500	13,000
New Zealand Certificate in Mechanical Engineering	3	1 year	Feb	IELTS Test - General or Academic score of 5.0 in all bands Pearson Test of English - PTE (Academic) score of 36 in all bands	None	25,000	1,000	26,000
New Zealand Certificate in Entertainment and Event technology	4	1 year	Feb	IELTS Test - General or Academic score of 5.0 in all bands Pearson Test of English - PTE (Academic) score of 36 in all bands	None	25,000	1,000	26,000

General English

Programme	Duration	Te Pūkenga S2 2023 Fees NZ\$ (inclusive study grant)	Insurance	Total Fee NZ\$ (incl insurance)
General English Plus Examination Preparation (Training Scheme) for 24 weeks	24 wks @ \$330 Per week	7,920	348	8,268
General English Plus Examination Preparation (Training Scheme) for 12 weeks (minimum)	12 wks @ \$330 Per week	3,960	174	4,134

How to apply

1

Choose your programme

Visit www.sit.ac.nz/International/How-to-Apply and select the course you want to apply.

2

Complete an International Student Application form and attach the required documents

- Verified passport ID page or verified birth certificate
- Recent English results
- Transcripts and academic achievements

You may also need to provide the following information (check the requirements of your particular programme from our website):

- Curriculum Vitae
- Letter of intent telling us why you wish to study your chosen programme
- Character or work references

All documents must be in English or be translated into English.

Verification should be done by an authorised education agent or Justice of the Peace / Notary Public / Commissioner of Oaths.

3

Send it to us by email: applications@sit.ac.nz

4

Receive an Offer of Place to study at SIT

5

Apply for a student visa

You can submit your application online or through the nearest Immigration New Zealand branch.

6

Tell us when you will arrive

Once your visa is approved in principle (AIP) you then pay your fees and book your flights. Advise us of your arrival details and we will book your airport pickup, insurance and accommodation.

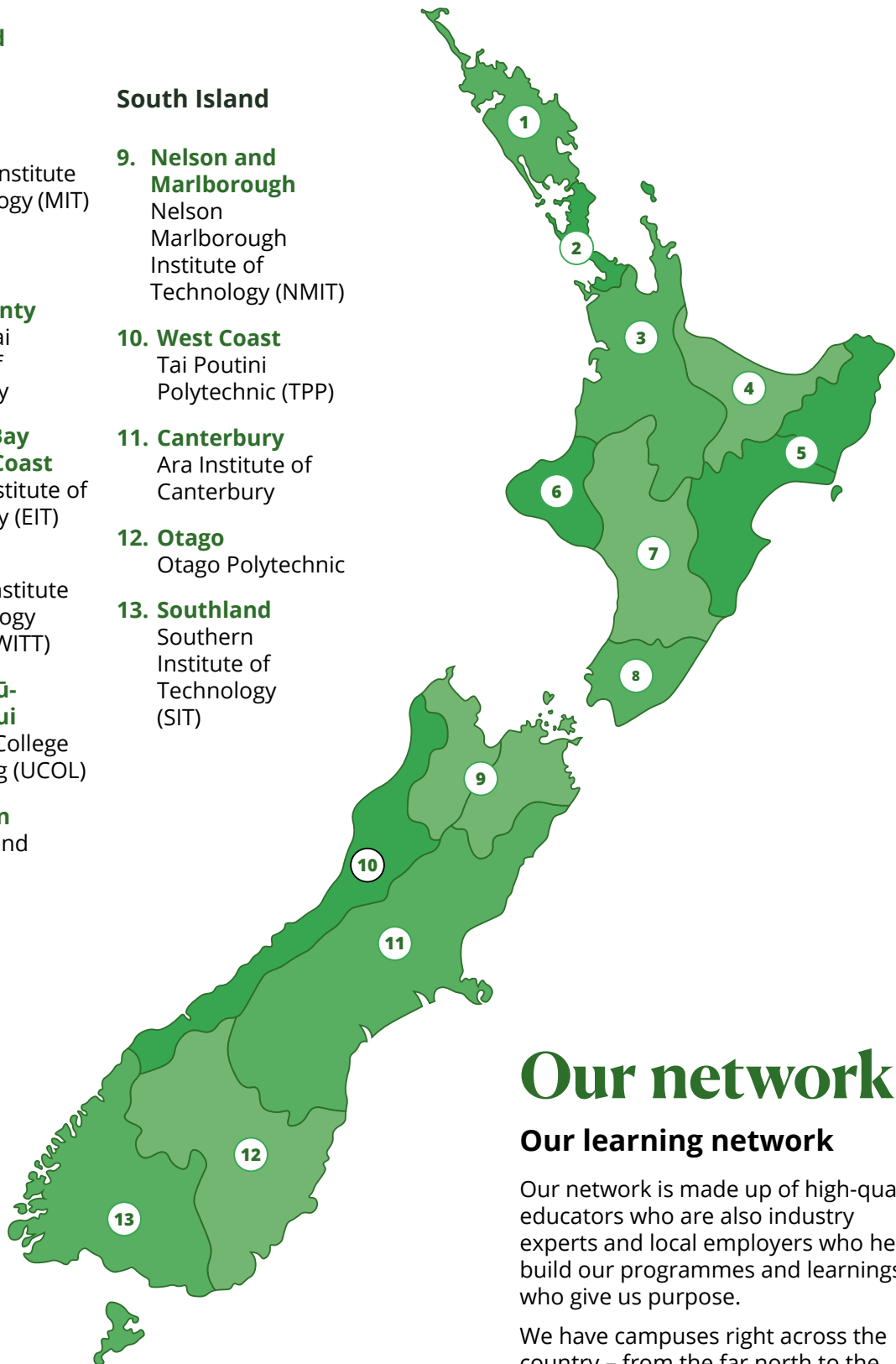
Main campuses across New Zealand

North Island

1. **Northland**
NorthTec
2. **Auckland**
Unitec
Manukau Institute of Technology (MIT)
3. **Waikato**
Wintec
4. **Bay of Plenty**
Toi Ohomai
Institute of Technology
5. **Hawke's Bay and East Coast**
Eastern Institute of Technology (EIT)
6. **Taranaki**
Western Institute of Technology
Taranaki (WITT)
7. **Manawatū-Whanganui**
Universal College of Learning (UCOL)
8. **Wellington**
Whitireia and WelTec

South Island

9. **Nelson and Marlborough**
Nelson
Marlborough
Institute of Technology (NMIT)
10. **West Coast**
Tai Poutini
Polytechnic (TPP)
11. **Canterbury**
Ara Institute of Canterbury
12. **Otago**
Otago Polytechnic
13. **Southland**
Southern
Institute of Technology (SIT)



Our network

Our learning network

Our network is made up of high-quality educators who are also industry experts and local employers who help build our programmes and learnings who give us purpose.

We have campuses right across the country – from the far north to the deep south.



Apply now for 2024

www.sit.ac.nz/international

Invercargill Campus

Tel: +64 3 211 2699

133 Tay Street, Invercargill,
Southland 9810, New Zealand

Queenstown Campus

Tel: +64 3 442 5375

Level 2 Dart House, Hawthorne Drive,
Remarkables Park Town Centre,
Queenstown 9300, New Zealand

