



# Prospectus

**Whitecliffe**  
College • EST. 1984

MASTER • POSTGRAD DIPLOMA • HONOURS • BACHELOR • DIPLOMA • CERTIFICATE

20  
25

# Think Whitecliffe. Choose Whitecliffe.

Whitecliffe College is New Zealand’s highest ranked and awarded institution in the private education sector and is a long-standing Category One Private Tertiary Establishment, established in 1984.

Whitecliffe stands as a cornerstone in New Zealand's private education landscape, boasting a storied combined legacy of over one hundred and thirty years dedicated to exemplary teaching and educational excellence across the schools of fine arts, design, fashion design, IT and creative art therapies.

The consolidation of four of the oldest PTEs in New Zealand has positioned Whitecliffe as a key player in the tertiary education sector. Offering a spectrum of programmes from certificates, degrees and up to the master's level (level 3-9), Whitecliffe is synonymous with academic distinction, and is committed to shaping students into global citizens in society and leaders within their respective professional fields.

- The combined education legacy is comprised of:
- Whitecliffe College of Art and Design (est. 1984)
  - NZ Fashion Tech (est. 1974)
  - Computer Power Plus (est. 1968)

In an era defined by rapid technological progress, AI and dynamic change, the demand for creative minds adept at adaptation, problem-solving, and innovation is incessantly burgeoning. Whitecliffe bridges this skills gap through a higher education ethos that places great importance on creativity, critical thinking and agility.

Our graduates are industry ready, can apply their skills and have had excellent exposure to work-based learning and application. Our graduates stand out and lead through their connection to industry and creative thinking prowess. Accolades adorn Whitecliffe's journey, celebrating its faculty, students, and alumni. Noteworthy recognition from industry advisory boards and regulatory bodies such as NZQA, underscored by a string of positive reviews and monitoring appraisals, underscore Whitecliffe's commitment to academic excellence.

Whitecliffe has continued to expand reach and is actively spearheading international expansion initiatives across Europe, Canada, Australia, China, and the UAE. With a global impact and connection, future graduates stand to benefit from these connections to world class education and qualifications at the leading edge, whilst passionately linked to roots in New Zealand.

Whitecliffe remains steadfastly committed to fostering strategic partnerships with industry through long established advisory boards and connections linked to each faculty, guiding education development and enhancements. With an unwavering focus on delivering top-tier education that equips students for success in an ever-evolving world, Whitecliffe epitomizes excellence in education, creativity, and innovation.




## Our values

Our values are a commitment to how we will work with and treat each other.

<div>130</div> <div>130 years of combined higher education experience</div>	<div>1</div> <div>Consistently ranked as a Category 1 educational provider by NZQA</div>	<div>1500</div> <div>Students per year across the six campuses</div>	<div>23</div> <div>Programmes across Fine Arts, Design, Fashion, IT and Arts Therapies</div>	<div>Integrity</div> <div>We are trustworthy, kind, ethical and fair</div>	<div>Creativity</div> <div>We explore new possibilities to create meaningful change</div>	<div>Courage</div> <div>We are bold in our aspirations and actions</div>	<div>Belonging</div> <div>We celebrate and embrace diversity. We are better together</div>
---	--	--	--	--	---	--	--

# Our campuses


 **Auckland Central**  
67 Symonds Street, Auckland Central

The Whitecliffe College head office and campus are based at 67 Symonds Street in the education hub of Auckland Central. This newly renovated campus provides a wide variety of high-quality art and design spaces, classrooms, and other learning facilities. This includes a library, art studios, darkrooms, screen printing facilities, a gallery, and a range of different computer suites to support specific student and programme needs. There are numerous food and entertainment options nearby, and public transport options are extensive and easily accessible.



 **Auckland Manukau**  
Level 2, 3 Osterley Way, Manukau

The Whitecliffe College Manukau campus is located at 3 Osterley Way in South Auckland. The campus currently focuses on vocational and foundation programmes in Fashion, Arts and Design, Digital Media, and Information Technology. Manukau campus is also the Auckland hub for Whitecliffe's postgraduate programmes in Creative Arts Therapies. The campus is situated above the Manukau City Public Library, and next to the main train and bus depot which makes public transport accessibility simple. Downtown Auckland is just a twenty-minute drive from the campus. Westfield Manukau City, which is less than a minute from the campus, provides many food and entertainment options.

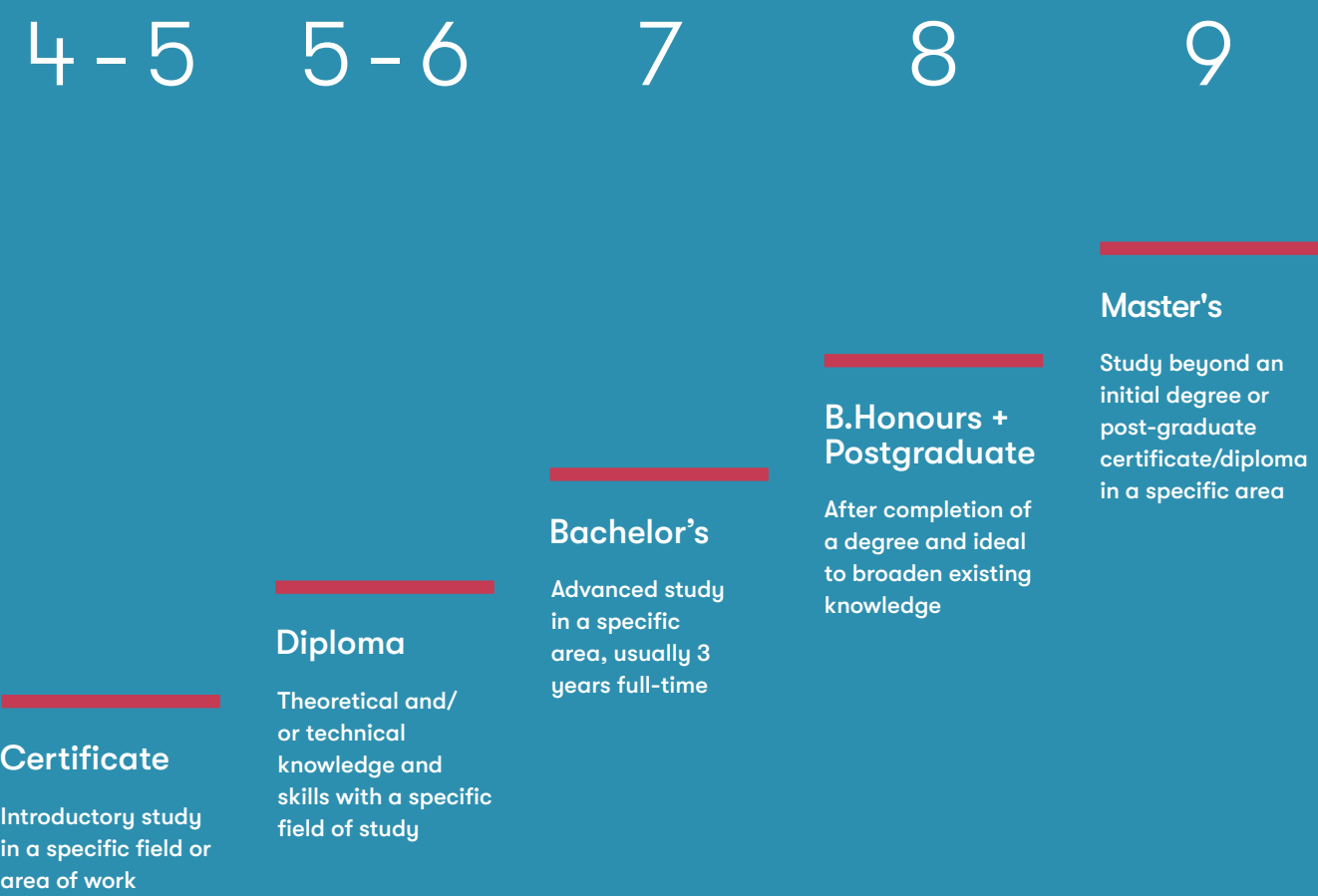
 **Wellington**  
110 Lambton Quay, Wellington

The Whitecliffe College Wellington campus is located at 110 Lambton Quay. The city's compact size and efficient public transport system close to the centrally located campus makes it ideal for students. The campus is home to Whitecliffe's Information Technology programmes and facilities and provides a range of Fashion, Digital Media, and Design programmes.

 **Christchurch**  
167 Madras Street, Christchurch

The Whitecliffe College campus in Christchurch is located at 167 Madras Street. The campus offers Information Technology programmes and is located close to the Innovation Precinct Zone. The Innovation Precinct Zone is a new hub for emerging businesses to help foster new ideas and growth in the Technology and Innovation sectors in New Zealand.

# Levels of learning for all pathways

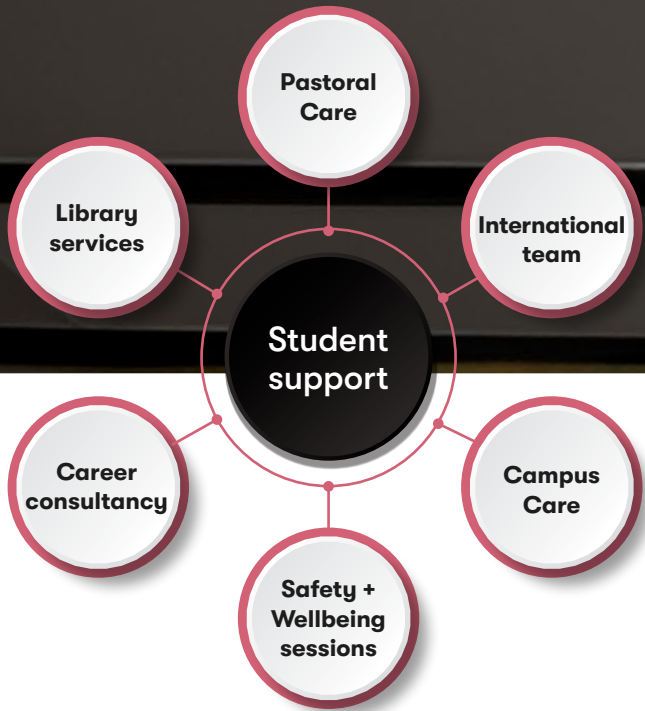


Whitecliffe College offers programmes from level 4 certificates to level 9 Masters qualifications. You can start at the level that suits your experience and qualifications, and then progress to higher level programmes.

\*Programmes may be subject to change. Please refer to [www.whitecliffe.ac.nz](http://www.whitecliffe.ac.nz) for the most updated information.



# Supporting your journey



## International students

International learners are supported by Whitecliffe College through orientation, scheduled lecturer-led teaching and learning sessions, study skill sessions, supervised study plans, online course and learning support resources, and relevant pastoral support and mentoring.

Lecturers are supported to conduct learning and teaching activities that meet the learning needs of international learners. Pastoral support staff provide assistance where individual international students are struggling or dealing with issues that may impede their progress to provide them with suitable skills and support to enable them to succeed.

## Counselling services

Whitecliffe College provides all students at all campuses with access to three free counselling sessions per year through Clearhead, an online Mental Health and Wellbeing website. Clearhead has a pool of approx. 150 counsellors in various locations that can be contacted by students, depending on their need and preference. This provides students with confidential counselling from a wide range of providers many of whom have highly specialised skills.

Students may also receive support from final year, Whitecliffe’s Masters of Creative Arts Therapy (Clinical) students as part of their Creative Wellbeing Project.

## Pastoral support

The Pastoral Support team are committed to providing ongoing support and advice for student safety and wellbeing and is compliant with and reports annually on The Education (Pastoral Care of Tertiary and International Learners) Code of Practice 2021 which covers all students. The support team help students with issues related to such things as personal, family, or financial difficulties, physical health, mental health, stress, anxiety, physical disabilities, learning difficulties, and any other issues that may affect learning progression and success.

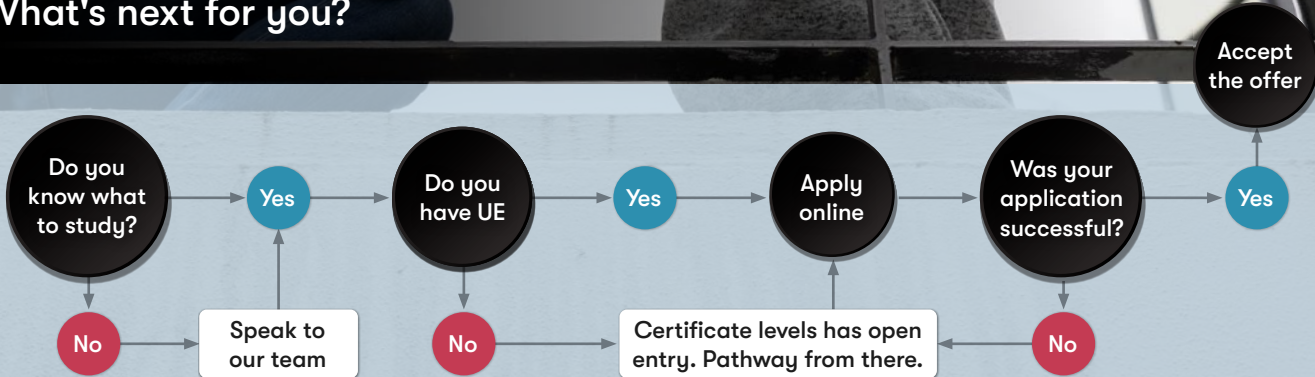
## Library + learning support

Whitecliffe Library is situated on the Symonds St. Campus. The Library aims to reflect the needs of all disciplines and subject areas taught at Whitecliffe. We have a wide range of print resources but increasingly our e-book and e-journal collections are expanding to support students both on and off campus. We provide access to databases from EBSCO, Gale, Taylor & Francis, IEEE, Springer and more, accessible 24/7.

Among other resources, Whitecliffe Library holds the largest and only specialised Creative Arts Therapy collection in New Zealand. The collection contains nearly 1000 books available on campus in Auckland or via remote loan (courier delivery to postgraduate students), and an increasing collection of several hundred e-books.

Library staff provide support and advice on getting the most out of these resources, through group or one-on-one training (in person or online) and online guides, and are always ready to answer questions by email or in the Library. Help is provided on searching the digital collections, identifying relevant sources, using the print collection and more.

## What's next for you?



## Study options

### Online programmes

Whitecliffe College offers a small number of fully online certificate and diploma programmes and micro-credentials in Information Technology.

### Blended learning

Most of our programmes are offered as blended learning. Blended learning involves learners and lecturers working together in mixed delivery modes that include on campus activities such as seminars, lectures, studio, labs, and workshops. Through Canvas, Whitecliffe’s learning platform, online learning includes supporting content, learning activities, discussions, and assessments.

### Part-time study

Some of our programmes of study have a part-time option where you can take fewer courses, and longer to complete your qualification. This may suit those who are working or have other commitments that don’t allow for full-time study.

## Careers + employment

Our experienced Whitecliffe College Careers and Employment team are passionate about helping you reach your short-term and long-term career goals.

We hold regular workshops through our Careers Lab to help prepare you for various levels of employment. Whether you’re looking for part-time or casual roles while you study, workplace experience, or help with starting your career beyond Whitecliffe College, these workshops will help you navigate this.

We also hold events that are designed to support your successful future beyond Whitecliffe College. At these events, you will be able to meet and build valuable connections with people who are relevant to your field of study, learn how to start your own business, create your own brand, and more.

The Careers and Employment Team can support you with:

- CV and Cover Letter writing
- Interview skills
- Connecting with your industry
- Increasing your presence - On campus and Online.

Whatever your future aspirations, you can book some time and talk to us, so that we can support your future!



# School of Fine Arts



The Whitecliffe College School of Fine Arts offers a suite of programmes from Certificate to Master's level that will enable you to explore and extend your own creative ideas in a supportive and engaging environment.

The School of Fine Arts covers a variety of established artistic practices that will enable you to communicate your ideas and connect with the wider arts community through professional and contemporary platforms of exhibition and publication.



# Programme structures

		Certificate in Fine Arts	
		COURSES   CREDITS	
SEMESTER 1	FA4401 Studio Arts	20	
	FA4402 Multimedia	20	
	FA4403 Arts Practices	20	
SEMESTER 2	†		
	Level 4, 60 credits		
	CFA, 60 credits		

Bachelor of Fine Arts							
COURSES   CREDITS							
7501 Critical + Contextual IA	15	7601 Critical + Contextual IIA	15	7701 Critical + Contextual IIIA	15		
7502 Materials + Processes	15	7602 Studio IIA	45	7702 Studio IIIA	45		
7512 Photography + Media Arts	15						
7522 Visual Thinking	15						
7503 Critical + Contextual IB	15	7603 Critical + Contextual IIB	15	7703 Critical + Contextual IIIB	15		
7504 Studio I	45	7604 Studio IIB	45	7704 Studio IIIB	45		
Level 5, 120 credits		Level 6, 120 credits		Level 7, 120 credits			
BFA, 360 credits							

Bachelor of Fine Arts (Hons)	
COURSES   CREDITS	
SEMESTER 1	8801 Critical Contexts 30
	8802 Studio Research 90
SEMESTER 2	Level 8, 120 credits
	BFA (Hons), 120 credits

Master of Fine Arts			
COURSES   CREDITS			
SEMESTER 1	5940 Studio Research Preparation 60	6942 Studio Research II 120	
	5941 Studio Research I 60		
SEMESTER 2	Level 8, 120 credits	Level 9, 120 credits	
	MFA, 240 credits		

† Certificate programmes may be offered in both semesters.      Note: Schedule may be subject to change

# Pathways

The Whitecliffe College School of Fine Arts offers programmes from Certificate to Master's level that will enable you to explore and extend your own creative ideas in a supportive and engaging environment.

Students are introduced to a range of drawing, mixed media, painting, lens-based and three-dimensional art-making techniques enabling them to communicate ideas visually, whilst providing opportunities to practice, develop, and refine these skills.

Critical art thinking and contextualisation is a key academic component of every course that sets our programmes at the forefront of creative art education.

We put a lot of emphasis on the importance of thinking through ideas and trying out different approaches, which leads to students producing work for public exhibition and publication, providing insight into professional contemporary art platforms and enabling students to connect with the wider arts community.



## Career opportunities

- Exhibiting artist
- Curator
- Illustrator
- Art project manager
- Gallery manager
- Set design constructor
- Art consultant
- Art teacher
- Photo journalist
- Art director
- Photographer
- Professional studio assistant

Shawnee Tekii

Whitecliffe College Bachelor of Fine Arts



Shawnee Tekii pursued a Bachelor of Fine Arts at Whitecliffe College, graduating in 2019. "Embarking on this path was like opening a door to a world where my passion for art could truly flourish," Shawnee reflects. Her journey from student to lecturer is a testament to her dedication and love for art.

"Teaching at the same programme where my journey began is profoundly rewarding," Shawnee shares.

She currently teaches the Certificate in Fine Arts, guiding students through visual research and making methods. Her firsthand experience enriches her teaching, allowing her to impart practical wisdom that bridges theory with real-world application.

One of Shawnee's proudest achievements during her studies was the profound growth in her personal art practice. "Starting from scratch and evolving to where I am now has been an incredible journey of self-discovery and fulfillment," she states.

Her biggest piece of advice for aspiring artists is about the importance of documenting work professionally. "Creating is just one part of being an artist; presenting your work effectively is equally crucial," Shawnee advises.

Shawnee is planning to expand her horizons with an artist residency in Tokyo, aiming to broaden her artistic network. "Whitecliffe College not only honed my skills but also prepared me to take on the world. For anyone passionate about art, this is where your journey should start."

Llenyd Price

Master of Fine Arts graduate



Llenyd's practice resides around temporary interactions with mental-health, through a predominantly painting-based practice. Their recent solo shows include Sanderson Contemporary gallery (2023) and Window gallery, UoA (2021). Group shows include Bergman gallery (2023) and RM gallery (2022).

Llenyd relocated from Hamilton to study for a BFA at Whitecliffe College and was able to complete further study for an MFA whilst residing back in Hamilton due to unique seminar-based, distance model Whitecliffe College offers for its MFA Programme. He states:

*"My initial interest was to become an art teacher at Secondary school but felt as though my real passion was really for making art. Whitecliffe's MFA programme pushed me to see the possibilities of being an artist and making that a full-time job, a seemingly impossible dream made possible. The MFA set up tools to apply my art for commercial settings, artist run galleries and also publicly funded spaces. With shows around Aotearoa, I hope to take the knowledge gained from both my BFA and MFA at Whitecliffe College to further expand my art practice, reaching wider audiences."*

The Whitecliffe College MFA provides students with individual supervisors who are either professionally exhibiting artists, academics, art writers or a combination of these. They help to facilitate an emerging and sustainable professional practice over 2 years. Through 8 week-long seminars, students are connected to the local and global art world via faculty and guest lectures and workshops; gallery and studio visits; and group critiques or assessments of their own work in progress, culminating in a public exhibition and contextual publication.



# Certificate in Fine Arts



NZQA Level	4
Credits	60
Duration	18 weeks
Start month	February + July
Location	Auckland Central + Auckland Manukau
Delivery	On campus

## Further study options

Level 4	Certificate in Digital Media + Design
Level 7	Bachelor of Fine Arts
Level 7	Bachelor of Design + Digital Media
Level 7	Bachelor of Sustainable Fashion Design



## Programme outline

This semester-long programme (18 weeks) concentrates on developing a portfolio for application to on-going tertiary study at Whitecliffe College, elsewhere in New Zealand, or overseas. The Certificate in Fine Arts focuses on developing skills in studio-based practice, multi-media techniques, and the understanding of arts practices. It offers focused sampling and practical exploration of a variety of art-making processes, and developing skills of interpretation and visual communication, primarily within Fine Arts (Drawing, Painting, Mixed-Media, Printmaking, Photography and Moving Image), with Design aspects that assist students to produce a professional portfolio of work.

Left Katalina Koloamatangi  
Right Ceres de Ridder (Left), Denise Etienne (Right)



## Admission requirements

- Applicants must
- Turn 17 within their first year of study at Whitecliffe College
- International applicants must
- Turn 18 within their first year of study at Whitecliffe College
  - Have achieved prior to enrolling an IELTS Academic overall score of 5.5 with no band less than 5.0 or equivalent ([whitecliffe.ac.nz/english-proficiency-outcome](http://whitecliffe.ac.nz/english-proficiency-outcome))
  - Attend an interview if required–this may be arranged via telephone or online
  - Meet New Zealand visa entry requirements [www.whitecliffe.ac.nz/international-students](http://www.whitecliffe.ac.nz/international-students)



# Bachelor of Fine Arts



NZQA Level 7  
Credits 360  
Duration 3 years  
Start month February  
Location Auckland Central  
Delivery On campus

## Further study options

Level 8 Bachelor of Fine Arts (Honours)  
Level 9 Master of Fine Arts

Left Poppy Gilson  
Right Lana Green (above)  
Right Saskia van Dijk (below)



## Programme outline

The Bachelor of Fine Arts focuses on contemporary arts practice, matching students' own ideas to relevant processes and techniques, together with current theoretical concerns. The focus of the degree is to encourage the emergence and development of a meaningful artistic and professional practice through a range of creative media, critique experience, and opportunities to showcase work to a public audience.

The BFA aligns the fields of Fine Arts and Photo Media (Photography and the Media Arts) together, with students able to develop ideas in one or the other, or both. The BFA prepares students to creatively and innovatively use technological advances as well as understand and appreciate the traditions of Fine Arts.



## Admission requirements

All applicants must

- Present a portfolio of examples of their original artwork
- Submit a letter of intent about why they want to enrol in a BFA
- Attend an interview.

Interviews may be conducted by video conference if necessary. Portfolios can be provided in digital format (PDF preferred).

Domestic students must also

- Have achieved NCEA University Entrance or equivalent CIE/IB award including:
  - Literacy – 10 credits at level 2 or above made up of 5 credits in reading and 5 credits in writing
  - Subject endorsement in at least one Level 3 Visual Arts subject (Design, Painting, Photography, Painting, or Sculpture) is preferable
- OR
  - Hold a New Zealand or overseas qualification assessed to be equivalent to the above
- OR
  - Have gained exceptional marks in accomplishing NCEA Level 2, including UE literacy requirements (5 credits in reading and 5 credits in writing at Level 2)
- OR
  - Have gained a level 4 arts and design certificate of at least 60 credits and are 18 years of age at the commencement of the BFA
- OR
  - Are over 20 years of age, with relevant arts industry experience or skills (demonstrated in their portfolio).

International applicants must

- Turn 18 within their first year of study at Whitecliffe College
- Hold a New Zealand qualification or equivalent to any stated above
- Have achieved prior to enrolling an IELTS Academic overall score of 6.0 with no band less than 5.5 or equivalent ([whitecliffe.ac.nz/english-proficiency-outcome](http://whitecliffe.ac.nz/english-proficiency-outcome))
- Meet New Zealand visa entry requirements [www.whitecliffe.ac.nz/international-students](http://www.whitecliffe.ac.nz/international-students)



# Bachelor of Fine Arts (Honours)



NZQA Level 8  
Credits 120  
Duration 1 year  
Start month February  
Location Auckland Central  
Delivery On campus

**Further study options**  
Level 9 Master of Fine Arts



Left Shaday Moore  
Right Delaney Sturrock

### Programme outline

Whitecliffe College BFA (Hons) students consolidate the learning and achievements of the BFA undergraduate study through the realisation of a sustained practice-based research inquiry to prepare them for professional life in the creative industries or further post-graduate study in a Master's degree.

Students undertake two courses of study that both span across two Semesters: Studio Research and Critical Contexts. Both courses work to develop and integrate contextual, theoretical, and studio-based learning centred on students' in-depth research projects. The BFA (Hons) programme culminates in a final exhibition or presentation of studio research outcomes and an accompanying written research summary.

### Admission requirements

- Applicants must*
- Have successfully completed an undergraduate qualification equivalent to NZQF Level 7 within the last 3 years
  - Achieved a Grade Point Average (GPA) of their final undergraduate year (Level 7 credits) of B - and above (GPA of 4)
  - Present a portfolio that reflects the potential to successfully complete the programme
  - Submit a Statement of Research Intent
  - Demonstrate academic writing ability which reflects the potential for successful study at the graduate level (applicants may use examples of previous academic writing to meet this requirement)
  - Attend an interview.
- International applicants must*
- Have achieved prior to enrolling an IELTS Academic overall score of 6.5 with no band less than 6.0 or equivalent ([whitecliffe.ac.nz/english-proficiency-outcome](http://whitecliffe.ac.nz/english-proficiency-outcome))
  - Hold a New Zealand qualification or equivalent to any stated above
  - Meet New Zealand visa entry requirements [www.whitecliffe.ac.nz/international-students](http://www.whitecliffe.ac.nz/international-students)

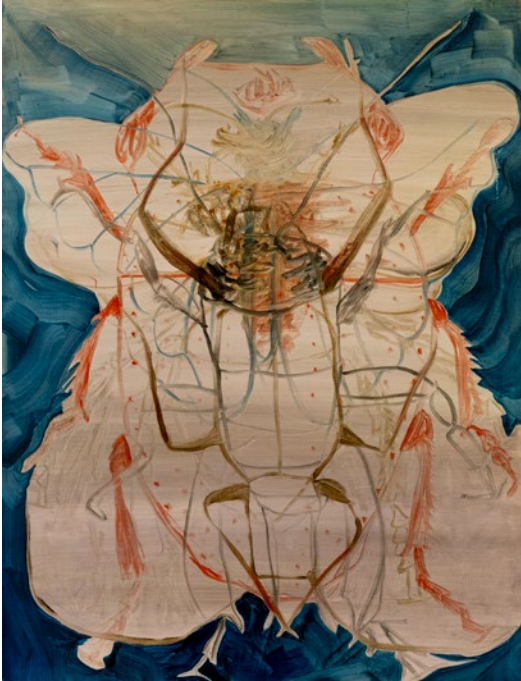


# Master of Fine Arts



NZQA Level	9
Credits	240
Duration	2 year
Start month	February
Location	Auckland Central
Delivery	Distance with some in-person seminars

**Further study options**  
Level 10 Doctoral degree



Left Mikaela Chung  
Right Michelle Reid



## Programme outline

The Master of Fine Arts is a full-time, two-year (year one at level 8, year two at level 9), distance programme with some in person seminars enabling enrolled artists to live and work anywhere in New Zealand. Designed around four, week-long seminars per year, the programme is delivered by faculty and guests that are nationally and internationally respected artists, critics, writers, and curators. According to their interests and proposed direction of study, students are assigned two supervisors to support their studio practice as it develops from Semester to Semester in order to best support their direction and research throughout the programme

The MFA programme prepares artists for a professional career working within a diverse field of contemporary art practices across local and international contexts. The interdisciplinary structure and philosophy support artists in understanding how art and artworks operate in the world, and through regular critique, supervisory guidance, seminar participation, and a focus on exhibition and publication practice, assists them to develop their individual approach to practice and research.

## Admission requirements

Applicants must

- Have a Bachelor of Arts degree (or equivalent) with a GPA of their final undergraduate year (Level 7 credits) of B–and above (GPA of 4)
- Present a portfolio that reflects skills and potential to successfully complete the programme
- Had significant exhibition and/or professional experience as an artist/designer
- Submit a Statement of Research Intent
- Demonstrate academic writing ability which reflects the potential for successful study at the graduate level (applicants may use examples of previous academic writing to meet this requirement)
- Attend an interview.

International applicants must

- Have achieved prior to enrolling an IELTS Academic score of 6.5 with no band score lower than 6.0 or equivalent ([whitecliffe.ac.nz/english-proficiency-outcome](http://whitecliffe.ac.nz/english-proficiency-outcome))
- Hold a New Zealand qualification or equivalent to any stated above
- Meet New Zealand visa entry requirements [www.whitecliffe.ac.nz/international-students](http://www.whitecliffe.ac.nz/international-students)



# School of Design Innovation

The Whitecliffe College School of Design Innovation offers programmes from certificate to degree level in Design and Digital Media and a master's degree in Creative Enterprise and Innovation.

You will explore the future of design and gain the knowledge and skills required to thrive in the dynamic industry. You will be encouraged to take an innovative and leading-edge approach to create insightful and thought-provoking design outcomes.





# Programme structures

Certificate in Digital Media + Design			Master of Creative Enterprise and Innovation				
6 Months			Year 1		Year 2		
COURSES   CREDITS			COURSES   CREDITS				
SEMESTER 1	DI4401 Visual Communication	15	SEMESTER 1	MCE8101 Risk and Resilience	30	MCE9115 Innovation to Market	60
	DI4402 Digital Imaging	15		MCE8102 Experimentation as a Tool for Success	30		
	DI4403 New Media	15					
	DI4404 Layout Design	15					
SEMESTER 2	†		SEMESTER 2	MCE8103 Applied Model of Success	30		
			MCE8104 Innovative Concept Testing	30			
Level 4, 60 credits			Level 8, 120 credits		Level 9, 60 credits		
CDMD, 60 credits			MCEI, 180 credits				

	Bachelor of Design + Digital Media					
	Year 1		Year 2		Year 3	
	COURSES   CREDITS					
SEMESTER 1	DI7501 Design Context I	15	DI7601 Design Context II	15	DI7701 Entrepreneurship I	15
	DI7502 Design Fundamentals	15	DI7602 Design Thinking II	15	DI7702 Studio IIIA: Design Audience	45
	DI7503 Coding Fundamentals	15	DI7603 Interaction Design II	15		
	DI7504 Digital Technologies	15	DI7604 Emerging and Future Design Technologies	15		
SEMESTER 2	DI7505 Design Thinking I	15	DI7606 Motion Design II	15	DI7704 Entrepreneurship II	15
	DI7506 Motion Design I	15	DI7605 Studio II: Social Impact and Sustainability	45	DI7703 Studio IIIB: Design Professional	45
	DI7507 Interaction Design I	15				
	DI7508 Studio I: Design Experience	15				
	Level 5, 120 credits		Level 6, 120 credits		Level 7, 120 credits	
	BDDM, 360 credits					

† Certificate programmes may be offered in both semesters.

Note: Schedule may be subject to change

# Pathways

The Whitecliffe School of Design Innovation offers programmes from certificate to degree level in Design and Digital Media.

You will explore the future of design and gain the knowledge and skills required to thrive in this dynamic industry. You will be encouraged to take an innovative and leading-edge approach to create insightful and thought-provoking design outcomes combining creativity with technology.

The School of Design Innovation teaches skills in graphic design, visual communication design, user experience, web and app design, and responsive design, data visualisation, human-centred design, design thinking, entrepreneurship, and independent research.

Graduates will be able to combine a range of skills to transform concepts and ideas into reality. Your skills will allow you to choose from a variety of career opportunities rather than be restricted to one career path.

The School also offers the Master of Creative Enterprise and Innovation, a first for New Zealand. This Masters programme enables students to create an innovative design taking it from concept to marketplace.

The MCEI was co-created with some of the leading innovative thinkers, founders, startups, successful business owners, entrepreneurs, investors, and mentors in New Zealand and abroad. Students will have access to industry experts through the programme via weekend master classes, guest lectures and presentations. The programme's flexible delivery mode allows professionals to continue working while exploring their innovative ideas and achieving their aspirations and goals.



## Career opportunities

### Degree

- Motion designer
- Digital arts
- 3D designer
- Creative director
- Animation
- Video production

- Multimedia designer
- Advertising and marketing
- Graphic designer
- Web/App designer
- Front-end designer
- UI/UX designer

- Experience designer
- Information architect
- Interactive media designer
- Social media designer
- Online/Digital designer
- Freelancer

### Postgraduate

- Founder
- Start up
- Social enterprise
- Entrepreneur
- Business owner
- Intrapreneur



## Briea Bentham

Whitecliffe College, Bachelor of Design + Digital Media graduand



**Why did you choose to study at Whitecliffe College?**

I chose to study at Whitecliffe College because of my deep admiration for the institution and the remarkable art its students consistently produce. Ever since my mum and I used to drive past the campus in Parnell, I was captivated by the beautiful building and intrigued by the creative energy coming from within. While exploring various educational options, I found myself continually drawn to Whitecliffe College.

What truly set Whitecliffe College apart for me was its emphasis on smaller class sizes and the opportunity for more personalised interaction with lecturers. In my first semester, being immersed alongside fellow fine art students in core classes provided a solid foundation in the fundamental principles of fine art. These principles became the foundation which I could build and refine my artistic journey throughout my time at Whitecliffe College.

Moreover, the diverse range of courses and electives offered added an exciting dimension to my studies. Exploring subjects like screen printing, delving into the history of design, dissecting pop art, and unravelling famous art movements not only expanded my knowledge but also infused a sense of joy and exploration into my educational journey.

**What did you enjoy most about your course, or what do you feel you can take away now that you’ve completed it?**

What I enjoyed most about my course and what I can take away now that I’ve completed it is the immense confidence I’ve gained in my design abilities and in crafting effective brand identities through visual elements. The support from our lecturers helped me understand how to integrate typography, colour, imagery, and other elements to represent a brand’s values cohesively. Learning this process was both inspiring and fulfilling.

Now, I feel prepared to tackle real-world design challenges with creativity and strategy, knowing I can create meaningful visual experiences that resonate with audiences. This course has not only improved my design skills but also deepened my understanding of branding, leaving me with a sense of purpose and fulfilment in translating abstract concepts into tangible visual identities.

During my studies, I discovered a passion for packaging design. My projects KIWI BBQ, Malthouse and Breez became exciting as I was able to create unique visual brands that I hadn’t been able to before. From creating the logo to figuring out how to package the products became a fun challenge to navigate. With the help of my lecturers, I was given amazing pointers and tips to make them more effective.



# Certificate in Digital Media + Design



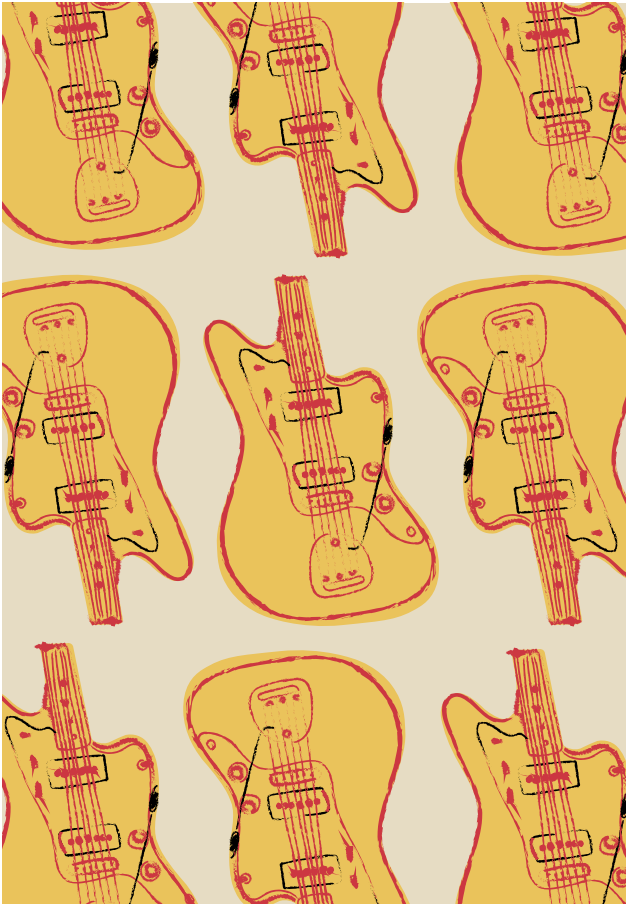
NZQA Level	4
Credits	60
Duration	18 weeks
Start month	February + July
Location	Auckland Central + Auckland Manukau + Wellington
Delivery	On campus

## Further study options

Level 4	Certificate in Fine Arts
Level 7	Bachelor of Design + Digital Media
Level 7	Bachelor of Fine Arts (Fine Arts / Photo Media)
Level 7	Bachelor of Sustainable Fashion Design



Right Hugo Simpson (below)



## Programme outline

This programme is centered around the introduction to graphic design practice and digital media processes.

The programme focuses on the development of theoretical knowledge and technical skills related to visual communication and drawing techniques and their application within the graphic design space. Upon the completion of the programme, students will have built on the foundation skills that can be further developed in Whitecliffe's degree-level programmes.

The emphasis of the Certificate in Digital Media + Design programme is on the understanding of critical thinking and technical processes as tools to solve for the design inquiry/brief. These are delivered through lectures, demonstrations, individual and peer discussions, and assignments of practical tasks and creative projects, both in-class as well as self-directed learning.

## Admission requirements

Applicants must

- Turn 17 within their first year of study at Whitecliffe

International applicants must

- Turn 18 within their first year of study at Whitecliffe
- Have achieved prior to enrolling an IELTS score (Academic Format) of 5.5 with no band score lower than 5 or equivalent ([whitecliffe.ac.nz/english-proficiency-outcome](http://whitecliffe.ac.nz/english-proficiency-outcome))
- Meet New Zealand visa entry requirements [www.whitecliffe.ac.nz/international-students](http://www.whitecliffe.ac.nz/international-students)



# Bachelor of Design + Digital Media



NZQA Level 7  
Credits 360  
Duration 3 years  
Start month February  
Location Auckland Central + Wellington  
Delivery On campus

**Further study options**  
Postgraduate Certificate or Diploma or Masters  
in a related area



Right Macauley Richards

## Programme outline

The degree is anchored within the three pillars of design innovation to ensure graduates are equipped to enter employment, or entrepreneurial ventures, with a sound foundation in criticality, creativity, and connectedness.

The programme includes Interactive Design, Motion Design, Design Thinking, UX and UI, Web and App development, Hybrid Reality, Emerging and Future Design Technologies, Entrepreneurship, Human Centred Design and Graphic Design. You will develop communication skills through collaboration, negotiation with stakeholders including community projects, live briefs, and internships.

The programme promotes innovative, experimental and reflective approaches to emerging and future design ideas and technologies, encouraging students to develop their own independent practices and employment opportunities to fulfil the needs of design industries, now and in the future.

Finally, the design solution must be viable and fit the client's business model. Of equal importance, the design solution should be sustainable and add value commercially, socio-economically, and culturally.

## Admission requirements

- Applicants must
- Have achieved NCEA Level 3 or above and 20 credits at NCEA Level 2 or above, including:
- NCEA Level 3; 14 credits each in three approved subjects and UE Literacy (NCEA Level 2 or above; 10 credits with 5 credits each in reading and writing) and UE Numeracy (NCEA Level 1 or above; 10 credits)
- OR
- A relevant qualification at Level 3 on the NZQF or above and the equivalent of UE Literacy and Numeracy
- OR
- New Zealand Certificate in Digital Media (Level 4)
- OR
- New Zealand Certificate in Art and Design (Level 4)
- OR
- A New Zealand or overseas qualification assessed to be equivalent to the above by the Head of School
- OR
- Passes in other certificate/diploma qualifications or courses as considered appropriate by the Head of School.

Applicants who do not meet the above criteria may be eligible for admission with the approval of the Head of School.

- International applicants must
- Turn 18 within their first year of study at Whitecliffe
  - Have achieved prior to enrolling an IELTS Academic score of 6.0 with no band score lower than 5.5 or equivalent ([whitecliffe.ac.nz/english-proficiency-outcome](http://whitecliffe.ac.nz/english-proficiency-outcome))
  - Hold a New Zealand qualification or equivalent to any stated above
  - Meet New Zealand visa entry requirements [www.whitecliffe.ac.nz/international-students](http://www.whitecliffe.ac.nz/international-students)



# Master of Creative Enterprise and Innovation



NZQA Level	9
Credits	180
Duration	18 months
Start month	February + July
Location	Auckland Central
Delivery	Distance with some in-person seminars

Get.it.Done!



## Programme outline

The MCEI programme enables you to experience a cutting-edge learning journey to identify and develop entrepreneurial characteristics to become a leader of change and impact the entre/intrapreneurial world. As innovator you will pioneer the art of non-linear problem solving to become resilient and risk tolerant as opposed to risk averse. The key is 'doing it for real', meaning a hands-on, applied approach to everything during the programme.

The programme will open the entrepreneurial door within you to enable you to recognise new business, social, indigenous or community focused opportunities, develop a minimum viable product (MVP) and approach investors. It is a gateway to create wealth by building a sustainable business or becoming an innovative leader within a large organisation, or social or community focused enterprise.

## Admission requirements

### Applicants must

- Have been awarded or qualified for a Bachelor's Degree achieved with a B average in the final year or a Bachelor Honours Degree or a Postgraduate Diploma OR
- Have been awarded a Bachelor's Degree followed by relevant professional experience OR
- Have demonstrated equivalent practical, professional and/or scholarly experience.

### International applicants must

- Turn 18 within their first year of study at Whitecliffe
- Have achieved prior to enrolling an IELTS academic score of 6.5 with no band score lower than 6 or equivalent ([whitecliffe.ac.nz/english-proficiency-outcome](http://whitecliffe.ac.nz/english-proficiency-outcome))
- Hold a New Zealand qualification or equivalent to any stated above
- Meet New Zealand visa entry requirements [www.whitecliffe.ac.nz/international-students](http://www.whitecliffe.ac.nz/international-students)



# School of Fashion + Sustainability



The Whitecliffe School of Fashion and Sustainability offers programmes in fashion and jewellery from certificate to degree level.

Our internationally recognised Fashion and Sustainability programmes focus on the importance of being creative, yet responsive and socially conscious. You will emerge as a thoughtful, skilled, and intelligent designer with connections to industry professionals and extensive design practice.

The Certificate in Jewellery is a new offering at Whitecliffe Colleges.

Programmes focus on Creative practices and techniques giving you the necessary skills to emerge as a skilled and creative designer and maker. Graduates will be able to enter the Jewellery industry with a broad understanding of what is required, be it in your own studio/workshop, as an artist or in the more traditional manufacturing industry.



# Programme structures

## Fashion

Certificate in Fashion			Certificate in Apparel + Fashion Technology		Diploma in Fashion	
COURSES   CREDITS						
SEMESTER 1	SF4101 Technical Skills and Processes for the Fashion industry	30	SF4401 Garment Technology	30	SF5501 Fashion Technical Skills	30
	SF4102 Creative Fashion Design Concepts and Construction	30	SF4402 Pattern Making	30	SF5502 Design Principles and Practices	30
SEMESTER 2	†		SF4403 Garment Construction	45	SF5503 Research and Design Concepts	15
			SF4404 Production Processes	15	SF5504 Studio	45
Level 4, 60 credits			Level 4, 120 credits		Level 5, 120 credits	

Bachelor of Sustainable Fashion Design (BSFD)						
BSFD Year 1			BSFD Year 2		BSFD Year 3	
SEMESTER 1	<b>Workshop 1:</b> SF7502 Earth Centered + Cultural Sustainability		<b>Workshop 1:</b> SF7602 Sustainable Fashion Practices - Tailoring		<b>Workshop 1:</b> SF7702 Sustainable Fashion Studio Research + Design	
	<b>Workshop 2:</b> SF7504 Fashion Practices		<b>Workshop 2:</b> SF7602 Sustainable Fashion Practices – Contemporary Reinterpretation of a Historical Design		<b>Workshop 2:</b> SF7702 Sustainable Fashion Studio Research + Design/ Construction	
	COURSES   CREDITS					
	SF7501 Pattern Making + Garment Construction I	15	SF7602 Sustainable Fashion Studio Practices	45	SF7701 Regenerative Design: Fashion Futures	15
	SF7502 Earth-Centered Design + Cultural Sustainability	15				
	SF7503 Fashion Theory and History	15	SF7603 Earth-Centred Design Thinking + Practices	15	SF7702 Sustainable Fashion Studio Research and Design	45
SF7504 Fashion Practices	15					
SEMESTER 2	<b>Workshop 3:</b> SF7505 Pattern Making and Garment Construction II		<b>Workshop 3:</b> SF7604 Sustainable Fashion Studio Project		<b>Workshop 3:</b> SF7703 Creative Enterprise	
	COURSES   CREDITS					
	SF7505 Pattern Making + Garment Construction II	15	SF7601 Nature in Fashion	15	SF7703 Creative Enterprise	15
	SF7506 Creative Fashion Studio Project	45	SF7604 Sustainable Fashion Studio Project	45	SF7704 Sustainable Fashion Collection	45
Year 1, 120 credits		Year 2, 120 credits		Year 3, 120 credits		
BSFD, 360 credits						

## Jewellery

Certificate in Jewellery		
SEMESTER 1	Module 1 Filing Design	10
	Module 2 Band Ring Designs	12
	Module 3 Mount Designs	20
	Module 4 Portfolio	18
SEMESTER 2	†	
Level 4, 60 credits		

		Bachelor of Jewellery Design Technology (BJDT)					
		BJDT Year 1		BJDT Year 2		BJDT Year 3	
		COURSES   CREDITS					
SEMESTER 1	Quarter 1	502 Design Studio 1	30	604 Advanced Creative Design Studio 2	30	701 Gemmology	15
						703 Complex CAD Designs	15
	Quarter 2	503 CAD Designs	15	604 Advanced Creative Design Studio 2	15	702 Jewellery Engraving	15
		502 Design Studio 1	15	601 Entrepreneurship	15	704 Gemstone Setting	15
SEMESTER 2	Quarter 3	501 Business Environment and Communication	15	602 Advanced Design Studio 2	30	705 Jewellery Repairs	15
		504 Design Research	15			706 Capstone Project	15
	Quarter 4	505 Creative Design Studio 1	30	602 Advanced Design Studio 2	15	706 Capstone Project	30
				603 Advanced CAD Designs	15		
		Year 1, 120 credits		Year 2, 120 credits		Year 3, 120 credits	
		BJDT, 360 credits					

† Certificate programmes may be offered in both semesters.

Note: Schedule may be subject to change



# Pathways

## Fashion

Fashion fosters creative minds to become responsible individuals, forming ideas and approaches to their sustainable and ethical fashion practice and research, and to apply their knowledge of sustainable, innovative, and regenerative practices to express their individual perspective and critical thinking. We encourage students to draw upon their own cultures and histories, social issues, values, and their local community to increase their awareness of wider issues within the local and global fashion industry, and to inform their contribution to this rapidly changing industry.

Our programmes are designed to facilitate, implement, and redesign the value of fashion, past, present, and future, through critically reflective sustainable fashion research and practice, theory, and craft.

Students also showcase their individual collections at the prestigious annual Whitecliffe Fashion Show and have the opportunity to participate in the Graduate Show and the Resene Colour of Fashion project which are showcased at New Zealand Fashion Week. Industry professionals regularly visit to deliver guest presentations on specialist areas within the industry, and provide invaluable feedback during individual student critique sessions, enriching our students' design practices.



## Career opportunities

- Patternmaker
- Designer
- Fashion media and marketing
- Machinist
- Fashion journalist
- Quality control
- Production Assistant
- Stylist
- Buyer
- Workroom assistant
- Concept and trend forecaster
- Sustainability consultant
- Garment technician
- Product developer
- Digital media assistant
- Textile design
- Self-employment/freelance practice

## Jewellery

The Jewellery Programmes include a certificate as well as a comprehensive degree programme. The Certificate introduces students to techniques and design processes. This allows the students to test their interest and aptitude for jewellery. Students without NCEA level 3 can enrol in the Certificate in Jewellery.

The Degree offers students the opportunity to develop their critical thinking, creative practice and techniques. Enabling graduates to emerge as thoughtful, skilled and intelligent jewellers. Potential jewellery career pathways include self-employed practitioners, bespoke designers, Cad designers, manufacturing jewellers. There are also opportunities in the Film industry, Galleries, museums and retail.



## Career opportunities

- Goldsmith
- CAD
- Freelance practitioner
- Jewellery designer
- Bench jeweller
- Films and media



# Alumni spotlight

## Trish Peng

Founder, Yours Truly Bridal  
Bachelor of Sustainable Fashion Design Graduate



Trish Peng has turned her passion for design into a flourishing career. Her journey began at Whitecliffe, where her dream of becoming a fashion designer found its true expression. "I knew I wanted to design, and Whitecliffe was the perfect place to start," Trish shares.

During her studies, Trish not only honed her design skills but also gained vital business knowledge. "The business programme was incredibly useful. It helped me launch my main line, Trish Peng, and later, our sister company, Yours Truly Bridal," she explains. Celebrating a decade with Trish Peng and witnessing the growth of Bridal business, Trish reflects on the solid foundation she built at Whitecliffe.

Yours Truly Bridal is a testament to Trish's commitment to sustainability. Specializing in pre-loved dresses, this sister company extends the life of bridal wear while supporting charities with each sale. "It's about making each dress meaningful beyond just one day," Trish says.

Her advice to budding designers at Whitecliffe is to cherish their unique vision. "Embrace your personal style and let it guide you. Whitecliffe's supportive environment is ideal for exploring your creative potential," she advises.

Trish Peng's story is not just about fashion; it's about making dreams come true with determination and the right education. Whitecliffe alumni like Trish show that with creativity and commitment, you can build a career that resonates with your passions and values.

## Denise Callan

Contemporary jewellery artist  
Lecturer at Whitecliffe



Denise Callan's transformative journey from a 25-year hiatus to becoming an award-winning contemporary jewellery artist and lecturer at Whitecliffe highlights the profound impact of lifelong learning and passion. Now a key faculty member, Denise inspires new generations of creatives through her role at Whitecliffe, where she teaches and mentors emerging artists.

"My jewellery making journey has been lifechanging," Denise shares. She emphasizes the personal and cultural significance of jewellery, which she explores through her unique pieces showcased in exhibitions like her recent solo show 'Dear Public' and the group show 'Proof of Concept' at Depot Artspace. Her work challenges conventional materials and forms, drawing on human experiences and social constructs.

Denise credits her success to the rigorous education and real-world opportunities provided by Whitecliffe's Bachelor of Jewellery Design and Technology programme. "The programme was pivotal; it turned theoretical knowledge into real-world skills," she remarks. This hands-on experience is something she now passes on to her students in the Level 4 Certificate in Jewellery course. "Many students start with no knowledge of making jewellery, and by the end of the course, they can create anything."

Denise's advice for anyone considering a career in jewellery is compelling: "Give it a go! You don't know what's possible until you start." Her story is not just about creating beautiful pieces but also building resilience and discovering one's potential through the art of jewellery making.



# Certificate in Fashion



NZQA Level	4
Credits	60
Duration	18 weeks
Start month	February + July
Location	Auckland Central + Auckland Manukau + Wellington
Delivery	On campus

**Further study options**  
Level 7 Bachelor of Sustainable Fashion Design



**Programme outline**  
The Certificate in Fashion programme introduces students to the foundational principles of technical skills, textile knowledge and creative processes to design, construct and present fashion designs, evidenced through portfolios and finished garments.  
Through a variety of practical projects students learn patternmaking and garment construction skills, fashion industry processes, and creative fashion design concepts. This is supported by conceptual content, knowledge, and practice. Students develop appropriate design-thinking skills, and gain a foundation of fashion knowledge, so they are equipped with learning strategies and skills for further tertiary study.



**Admission requirements**  
*Applicants must*  
• Turn 17 within their first year of study at Whitecliffe  
• No formal qualification or portfolio is required for admission  
  
*International applicants must*  
• Turn 18 within their first year of study at Whitecliffe  
• English language level of overall IELTS score (Academic Format) of 5.5 (no band score lower than 5) or equivalent ([whitecliffe.ac.nz/english-proficiency-outcome](http://whitecliffe.ac.nz/english-proficiency-outcome))  
• Meet New Zealand visa entry requirements  
[www.whitecliffe.ac.nz/international-students](http://www.whitecliffe.ac.nz/international-students)



# Certificate in Apparel + Fashion Technology



NZQA Level	4
Credits	120
Duration	1 year
Start month	February
Location	Auckland Central + Auckland Manukau + Wellington
Delivery	On campus

### Further study options

Level 5	Diploma in Fashion
Level 7	Bachelor of Sustainable Fashion Design



Right - Charlotte Pritchard (Left); Emma Blaikie (Right)



### Programme outline

In this programme students learn and apply industrial machinery techniques and terminology necessary for fashion garment construction. Students are introduced to fabric technology, patternmaking and creative fashion design.

Students learn to use industry-specific construction methods to make a range of full garments including skirts, tops, and trousers. Students will learn industry relevant skills to start their journey into the world of sustainable and commercial fashion design.

### Admission requirements

- Applicants must
- Turn 17 within their first year of study at Whitecliffe
  - No formal qualification or portfolio is required for admission
- International applicants must
- Turn 18 within their first year of study at Whitecliffe
  - English language level of overall IELTS score (Academic Format) of 5.5 (no band score lower than 5) or equivalent ([whitecliffe.ac.nz/english-proficiency-outcome](http://whitecliffe.ac.nz/english-proficiency-outcome))
  - Meet New Zealand visa entry requirements [www.whitecliffe.ac.nz/international-students](http://www.whitecliffe.ac.nz/international-students)



# Diploma in Fashion



NZQA Level	5
Credits	120
Duration	1 year
Start month	February
Location	Auckland Central + Auckland Manukau + Wellington
Delivery	Mainly on campus + some online

**Further study options**  
Level 7 Bachelor of Sustainable Fashion Design



Left Resene Tropical by Sophie Matthews (left)  
Resene Skylight by Kieran Bradley Lotz (middle)  
Resene Happy by Robyn Thomson (right)

### Programme outline

In this programme students will further develop technical skills and knowledge of the terminology and techniques used in fashion garment production.

Students will learn a broad range of technical skills, flat pattern making and computer aided pattern making, Adobe Illustrator, and textile knowledge, to design, construct and present a range of creative fashion designs.

Students will be introduced to the design development process and to sustainable practices for the commercial fashion industry.

### Resene Colour of Fashion

Innovative design, a contemporary colour palette, and beautiful silk - three elements that come together in the Resene Colour of Fashion project. This exciting project takes students into a contemporary world of colour and design, to bring Resene's fashion colours to life, in an exciting industry-linked project, unique to Whitecliffe School of Fashion and Sustainability.

Students receive a length of silk dyed to match one of the latest Resene fashion palette colours. They have four weeks following an industry brief to design and produce a look that creates runway impact. The garments are modelled before a judging panel and each year a number are selected to be presented at New Zealand Fashion Week and at the Whitecliffe Annual Fashion Show.

### Admission requirements

#### Applicants must

- Turn 17 within their first year of study at Whitecliffe
- Have successfully gained the New Zealand Certificate in Apparel and Fashion Technology, (Level 4)

OR

- Have successfully gained the New Zealand Certificate in Fashion, (Level 4)

OR

- Provide a portfolio of garment construction and pattern making, evidence of industry experience and a relevant reference, competent skills in literacy, numeracy and basic computer literacy

AND

- Attend an interview if required.

#### International applicants must

- Turn 18 within their first year of study at Whitecliffe
- Have successfully gained the New Zealand Certificate in Apparel and Fashion Technology, (Level 4)

OR

- Have successfully gained the New Zealand Certificate in Fashion, (Level 4)
- Have achieved prior to enrolling an IELTS overall band score of 5.5 with no band lower than 5 or equivalent ([whitecliffe.ac.nz/english-proficiency-outcome](http://whitecliffe.ac.nz/english-proficiency-outcome))
- Meet New Zealand visa entry requirements [www.whitecliffe.ac.nz/international-students](http://www.whitecliffe.ac.nz/international-students)



# Bachelor of Sustainable Fashion Design



NZQA Level	7
Credits	360
Duration	3 years
Start month	February
Location	Auckland Central + Wellington
Delivery	On campus

## Further study options

Post graduate Certificate or Diploma or Masters in a related area



Left Maxwell Hutton  
Right Louis Sutton (left)  
Foreist Kukutai (middle)  
Ruby Houghton (right)



## Programme outline

The Bachelor of Sustainable Fashion Design is creative practitioner, community, and industry-focused, designed to meet the professional needs of the wider sustainable fashion and design industry. It is structured by three key interrelated strands of content: sustainable fashion research and practice, theoretical studies, and creative enterprise.

All technical, theoretical, and professional knowledge and skills inform and are integrated into the practice of designing and creating sustainable and innovative design solutions. Industry-focused course content and workshops include Pattern Making, Garment Construction, Research, Concept and Design Development, Surface and Material Explorations, Tailoring, Creative Enterprise, and Industry Internships.

Studio Practice is complemented by courses in Sustainable Fashion Practices, Earth-Centred Design, Natural Dyeing, Fashion History and Theory, Fashion Illustration, and Adobe Creative Suite Skills. Students research, design, and develop conceptually based collections that reflect a personal design aesthetic and incorporate regenerative, sustainable and ecological practices and processes, to produce a professional body of work, and showcase their collections at the annual Whitecliffe Fashion Show.

## Admission requirements

### Applicants must

- Have achieved NCEA Level 3 or above and 20 credits at NCEA Level 2 or above, including:
  - NCEA Level 3; 14 credits each in three approved subjects and UE Literacy (NCEA Level 2 or above)
  - 10 credits with 5 credits each in reading and writing) AND
  - UE Numeracy (NCEA Level 1 or above; 10 credits).

OR

- Have gained one of the following qualifications
  - New Zealand Certificate in Apparel and Fashion Technology qualifications (Level 4)
  - New Zealand Certificate in Fine Arts (L4)
  - New Zealand Certificate in Digital Media + Design (Level 4)
  - A New Zealand or overseas qualification assessed by NZQA to be equivalent to any stated above.
- Attend an interview to determine their suitability for the programme
- Present Letter of Intent and a portfolio containing between 12 – 24 samples of creative work that reflect skills and potential to successfully complete the programme.

### International applicants must

- Turn 18 within their first year of study at Whitecliffe
- Hold a New Zealand qualification or equivalent to any stated above
- Have achieved prior to enrolling an IELTS Academic overall score of 6.0 with no band less than 5.5 or equivalent ([whitecliffe.ac.nz/english-proficiency-outcome](http://whitecliffe.ac.nz/english-proficiency-outcome))
- Meet New Zealand visa entry requirements [www.whitecliffe.ac.nz/international-students](http://www.whitecliffe.ac.nz/international-students)



# Certificate in Jewellery

NZQA Level 4  
Credits 60  
Duration 18 weeks  
Start month February + July  
Location Auckland Central  
Delivery On campus

**Further study options**  
Level 7 Bachelor of Jewellery Design and Technology  
Level 7 Bachelor of Sustainable Fashion Design



Left Davinder Kaur  
Right Whitecliffe jewellery studio

## Programme outline

This programme is an informative and practical starting point for those who are interested in learning about the general manufacturing process of jewellery, and for those who are looking to take the first step towards pursuing a career in the jewellery or goldsmithing industry.

Students will develop theoretical knowledge about precision, accuracy, problem-solving and design. This knowledge will be applied and practised through hands-on tasks.

This programme will also equip students with foundational theory and practice if they decide to proceed with further study of jewellery and goldsmithing.

Students will study jewellery and goldsmith theory and apply this knowledge through manufacturing tasks culminating in an individual design and make project.

This programme will prepare students to enter the jewellery manufacturing industry

## Admission requirements

### Applicants must

- Be 16 years or older
- Have a minimum of NCEA Level 1 English
- Provide a portfolio demonstrating artistic, creative, and crafts potential - this may include three-dimensional works, photographs and other work
- Attend an interview.

### International applicants must

- Turn 18 within their first year of study at Whitecliffe
- Have achieved prior to enrolling an IELTS Academic score of 5.5 or higher, with no band score lower than 5 or equivalent ([whitecliffe.ac.nz/english-proficiency-outcome](http://whitecliffe.ac.nz/english-proficiency-outcome))
- Meet New Zealand visa entry requirements  
[www.whitecliffe.ac.nz/international-students](http://www.whitecliffe.ac.nz/international-students)



# Bachelor of Jewellery Design + Technology

NZQA Level 7  
Credits 360  
Duration 3 years  
Start month February + July  
Location Auckland Central  
Delivery On campus

**Further study options**  
Postgraduate Certificate or Diploma or Masters in a relevant area

Left Mika Toogood  
Right Wilson Braan

### Programme outline

The Bachelor of Jewellery Design + Technology is a thorough and comprehensive degree-level programme designed for those who are looking to pursue a professional career in Jewellery. It is designed to support and extend the knowledge of both students with existing foundational jewellery and manufacturing knowledge as well as students at the very beginning of their journey.

This programme builds a supportive community for the student as they gain workshop experience in mastering technical hand skills and understanding design principles, developing a fluency in digital design and an understanding of business operations. It will develop students into professionals who are able to manage all phases of design from initial inspiration, analysis, development, and finishing of the final product.

Students will be equipped with skills focusing on entrepreneurship, resource, and material management.

This programme is designed to deliver an adaptive curriculum to develop creative stimulus, innovation, and originality producing a jewellery professional who is able to identify specific niches within the jewellery sector and is qualified with the specialist knowledge and skills required to enter the work force as a practising jeweller.



### Admission requirements

Applicants must

- Meet the NCEA Level 3 (or equivalent) entry requirements including:
  - Three subjects – at Level 3 or above, made up of 14 credits each, in three subjects (Specific subjects, or range of subjects from the approved list may be specified here)
  - Literacy – 10 credits at Level 2 or above, made up of 5 credits in reading and 5 credits in writing
  - Numeracy – 10 credits at Level 1 or above, made up of Achievement standards – specified achievement standards available through a range of subjects

OR

- Have appropriate work experience in the wider Jewellery industry (Interview required).
- Attend an interview
- Complete an audition, a two-day process to assess interest and suitability, if required.

International applicants must

- Turn 18 within their first year of study at Whitecliffe
- Have achieved prior to enrolling an IELTS Academic score of 6, with no band score lower than 5.5; or equivalent ([whitecliffe.ac.nz/english-proficiency-outcome](http://whitecliffe.ac.nz/english-proficiency-outcome)); or the New Zealand Certificate in English Language (Academic, Level 5, Ref: 1883)
- Hold a New Zealand or overseas qualification assessed by NZQA to be equivalent to any stated above
- Submit a portfolio of their work exhibiting design skills and capabilities
- Attend a follow up video interview if required
- Meet New Zealand visa entry requirements  
[www.whitecliffe.ac.nz/international-students](http://www.whitecliffe.ac.nz/international-students)



# School of Information Technology

```
43 audioTexture: { type: "t", value: null },
44 displacementScale: { type: "f", value: 2 },
45 },
46 vertexShader: `
47     varying vec2 vUv;
48
49     void main() {
50         vUv = uv;
51         gl_Position = projectionMatrix * modelViewMatrix * vec4(position, 1.0);
52     }
53 `,
54 fragmentShader: `
55     uniform sampler2D videoTexture;
56     uniform sampler2D audioTexture;
57     uniform float displacementScale;
58
59     varying vec2 vUv;
60
61     void main() {
62         vec4 audioData = texture2D(audioTexture, vec2(vUv.x, 0.5));
63         float displacement = audioData.r * displacementScale;
64         vec2 uv = vec2(vUv.x, vUv.y + displacement);
65         gl_FragColor = texture2D(videoTexture, uv);
66     }
67 `;
68
69 // Create a mesh and add it to the scene
70
```

Our programmes are designed with industry partners to ensure our programmes are aligned with current industry standards, so that our graduates are equipped with the skills needed to enter the workforce successfully upon gaining their qualification.

The School of IT offers a full range of programmes including certificate, diploma, bachelor, post graduate diploma and masters.



Programme structures

		Certificate in Information Technology Essentials		Certificate in Information Technology	
		COURSES   CREDITS			
SEMESTER 1	Quarter 1	IT4001 IT Fundamentals	15	IT5010 Technical Support Fundamentals	15
		IT4002 Information Management	15	IT5016 Software Development Fundamentals	15
	Quarter 2	IT4003 Web Design	15	IT5015 Information Systems	15
		IT4004 Software Development	15	IT5017 Web Concepts	15
SEMESTER 2	Quarter 3	†		†	
	Quarter 4				
		Level 4		Level 5	
		60 credits		60 credits	

		Diploma in Web Development and Design		Diploma in Information Technology Technical Support		Diploma in Software Development			
		COURSES   CREDITS				Year 1		Year 2	
SEMESTER 1	Quarter 1	IT5010 Technical Support Fundamentals	15	IT5010 Technical Support Fundamentals	15	IT5010 Technical Support Fundamentals	15	IT6040 Agile Project Managemen	15
		IT5016 Software Development Fundamentals	15	IT5016 Software Development Fundamentals	15	IT5016 Software Development Fundamentals	15	IT6042 Advanced Mobile Development	15
	Quarter 2	IT5015 Information Systems	15	IT5015 Information Systems	15	IT5015 Information Systems	15	IT6006 Secure Web Application Development with Server-side Scripting	15
		IT5017 Web Concepts	15	IT5017 Web Concepts	15	IT5017 Web Concepts	15	IT6037 Data Access and Management	15
SEMESTER 2	Quarter 3	IT5005 Advanced Web Scripting	15	IT5025 Computer Servicing Skills	15	IT5005 Advanced Web Scripting	15	IT6038 Web Services	15
		IT5039 Client-side Development	15	IT5026 Operating Systems	15	IT5039 Client-side Development	15	IT6039 Software Testing and Maintenance	15
	Quarter 4	IT5001 Testing and Deployment of Web Applications	15	IT5027 Networking	15	IT6033 Data Structures and Algorithms	15	IT6041 Software Project	30
		IT5090 Web Application Capstone Project	15	IT5008 Database Administration and Management	15	IT6035 Mobile Development	15		
		Level 5		Level 5		Level 6, 120 credits		Level 6, 120 credits	
		120 credits		120 credits		240 credits			

† Certificate programmes may be offered in both semesters.

Note: Schedule may be subject to change



Programme structures

BACHELOR OF APPLIED INFORMATION TECHNOLOGY						
COURSES   CREDITS						
YEAR 1			YEAR 2		YEAR 3	
COMPULSORY	IT7511 Technical Support Fundamentals	15	N/A		IT7745 IT Project	60
	IT7512 Web Concepts	15				
	IT7521 Information Systems	15				
	IT7514 Software Development Fundamentals	15				
SPECIALISATION 1	Network Engineeering and Security					
	IT7515 Computer Servicing Skills	15	IT638 IT Security Fundamentals	15	IT7739 IP Switched Networks	20
	IT7516 Operating Systems	15	IT629 Routing and Switching	15	IT7740 IP Routing	20
	IT7517 Networking	15	IT630 Connecting Networks	15	IT7741 Troubleshooting IP Networks	20
	IT7518 Database Administration and Management	15	IT631 Network Management	15		
			IT632 Wireless Networking	15		
			IT633 Unified Communications	15		
			IT634 Network Security	15		
			IT635 IT Management	15		
	OR		OR		OR	
SPECIALISATION 2	Web and Software Development					
	IT7536 Event-driven Programming	15	IT624 Secure Web Application Development and Server-side Scripting	15	IT7742 Advanced Programming	20
	IT7537 Web Programming	15	IT625 Data Access Management	15	IT7743 Interaction Design	20
	IT7519 Advanced Web Scripting	15	IT626 Web Services	15	IT7744 Web Technologies	20
	IT7520 Client-side Development	15	IT621 Data Structures and Algorithms	15		
			IT639 Advanced Mobile Development	15		
			IT623 Mobile Development	15		
			IT627 Software Testing and Maintenance	15		
			IT628 Agile Project Management	15		
	Level 5 • 120 credits		Level 6 • 120 credits		Level 7 • 120 credits	
360 credits						

Note: Schedule may be subject to change

Master of Information Technology (MIT)						
Postgraduate Diploma in Information Technology (PGDiplIT)					TRIMESTER 3	
TRIMESTER 1		TRIMESTER 2				
COURSES   CREDITS						
COMPULSORY	IT8101 Research Methods and Skills	15	IT8109 Special Topic	30	IT9115 Project	60
	IT8102 Technology Management	15				
ELECTIVES	Any 2 courses of the following:		Any 1 course of the following:			
	IT8103 Cyber Security (pre-requisite for Information Security Standards and Operations)	15	IT8107 Information Security Standards and Operations	30		
	IT8104 Data Analysis (pre-requisite for Data Science: Introduction, Management and Practice)	15				
	IT8105 Machine Learning	15	IT8108 Data Science: Introduction, Management and Practice	30		
	IT8106 Ubiquitous Computing and Intelligent Systems	15				
Level 8, 60 credits		Level 8, 60 credits				
PGDiplIT, 120 credits						
MIT, 180 credits						

Note: Schedule may be subject to change



# Pathways



The Whitecliffe School of Information Technology offers a full range of programmes, from Certificate to Masters level, allowing student to staircase to higher levels of study, along with a suite of industry certifications and micro-credentials.

Our programmes cover areas of information technology such as web and software development, design, network engineering, and security. Our Masters programme offers specialisations in Data Science and Cyber Security.

Whitecliffe has initiated agreements with professional bodies, such as Microsoft, Cisco, RedHat, CompTIA, Oracle, and EC Council. The industry certifications from these bodies complement Whitecliffe's IT qualifications. Whitecliffe students may obtain up to 60% discount vouchers towards the industry certification exam fee.



# Alumni spotlight

## Pawanjit Singh Ghortora

Principal Cloud Architect  
Master of IT (Data Science) Graduate



Whitecliffe College's Master of IT (Data Science) emerged as the beacon of hope in my quest. Initially, balancing full-time employment, family responsibilities, and academic pursuits seemed daunting. However, the program's flexible schedule, coupled with the unwavering support from the faculty, facilitated a smooth transition. The initial weeks, filled with apprehension, soon gave way to a rhythm of engagement and learning, thanks to the meticulously designed curriculum and the supportive learning environment fostered by Whitecliffe.

The first semester was transformative, offering deep dives into machine learning, data analysis, and research methodologies. These insights have not only enriched my knowledge base but have also opened doors to AI-based project opportunities within my current organization. The accessibility of lecturers for support, clarification, and one-on-one meetings beyond the regular class seminars has been instrumental in my academic journey.

I wholeheartedly endorse Whitecliffe College to those aspiring to venture into data science or enhance their expertise in this field. The program stands as a testament to the college's commitment to fostering intellectual growth and professional advancement, making it a pivotal step for anyone looking to make their mark in the ever-evolving landscape of technology and data science.

## Career opportunities

Certificate	Diploma	Degree	Postgraduate	Master
<ul style="list-style-type: none"><li>• Junior IT Support roles</li><li>• Junior Helpdesk roles</li><li>• Junior Programming roles</li><li>• Junior Development roles</li><li>• Junior Web Developer</li><li>• Field Technician</li></ul>	<ul style="list-style-type: none"><li>• IT Tech Support roles</li><li>• Network Technician</li><li>• Network Administrator</li><li>• Help Desk Analyst</li><li>• Web Designer</li><li>• Web Developer</li><li>• Web Content Editor</li><li>• Front End Designer</li><li>• UX Designer</li><li>• Mobile Application Developer</li><li>• Software Tester</li><li>• Junior Software Developer</li><li>• Front-end Web Developer</li><li>• Back-end Web Developer</li></ul>	<ul style="list-style-type: none"><li>• Network Engineer</li><li>• Cybersecurity Specialist</li><li>• Software Architect</li><li>• Dev Ops Engineer</li><li>• Security Systems Engineer</li><li>• IP Design Engineer</li><li>• IT Business Analyst</li><li>• Infrastructure Support</li><li>• Software Developer</li><li>• Front-end/Back-end Developer</li><li>• Software Release Manager</li><li>• Systems Analyst</li><li>• Application Developer</li><li>• QA Test Analyst</li></ul>	<ul style="list-style-type: none"><li>• Cyber Security Engineer</li><li>• Penetration Tester</li><li>• Network Security Engineer</li><li>• Data Scientist</li><li>• Data Engineer</li><li>• Big Data Engineer</li><li>• Data Visualization Developer</li><li>• Business Intelligence (BI) Engineer</li><li>• Statistician</li></ul>	<ul style="list-style-type: none"><li>• Cyber Security Manager</li><li>• Cyber Security Consultant</li><li>• Cyber Security Analyst</li><li>• Security Operations Centre (SOC) Manager</li><li>• Penetration Tester</li><li>• Security Information and Event Management (SIEM), Administrator</li><li>• Network Security Engineer</li><li>• Security Consultant</li><li>• Governance, Risk Management and Compliance (GRC) Consultant</li><li>• Technology Solutions Architect</li><li>• Senior Technology Advisor</li></ul>
				<ul style="list-style-type: none"><li>• Senior Data Scientist</li><li>• Data Architect</li><li>• Big Data Engineer</li><li>• Business Analytics Specialist</li><li>• Data Visualization Developer</li><li>• Business Intelligence (BI) Engineer</li><li>• BI Solutions Architect</li><li>• BI Specialist</li><li>• Analytics Manager</li><li>• Statistician</li></ul>



# Micro-Credentials



NZQA Level 6  
Credits 15 or 40  
Duration 9 or 16 weeks  
Start month February + May + July + October  
Delivery Online

**Further study options**  
Level 7 Bachelor of Applied Information Technology

### Micro-credential outlines

A Micro-Credential is a short, certification-style course that focuses on a particular area of study or skill. It can be stand-alone or stackable as part of a Whitecliffe's IT bachelor's degree. Micro-Credentials help learners gain knowledge fast, fill gaps in their skillset and improve their employability.

#### Cyber Technician

Provides practical skills for efficient, reliable cyber security operations for network security support skills and the competency to protect organisational networks, data, and devices.

#### Network Defender

Create network protection and prevention systems that are effective against threats and vulnerabilities including construction and application of cyber defence initiatives for network environment protection which incorporates analysis, monitoring, and counter measure deployment that adds value to existing or new networks.

#### Ethical Hacking Practices

Develop practices to support the protection of organisational networks, devices, and data including techniques and tools to identify potential threats and vulnerabilities that require ethical hacking interventions, protection, recovery, and/or resolution measures and ethical protocols.

#### Digital Forensics + Network Defence Essentials

Develop forensic investigation practice of cybercrime and digital incidents within organisation's network, devices, and data using results of forensic investigations to provide evidence that enhances existing defence efforts or develop new strategies to prevent future occurrences.



#### Full Stack Python Development

Build programming projects using Python programming language that includes the application and integration of Python generated coding into full-stack web front and back-end design from concept to implementation through the developmental life cycle of design.

#### Full Stack JavaScript Development

Build interactive web application projects using JavaScript programming language. As a full-stack web development process, this approach combines front and back-end design frameworks to bring projects from initial concept to successful implementation.

#### Full Stack .NET Development

Build programming projects using .NET programming language that includes the application and integration of .NET generated coding into full-stack web front and back-end design from concept to implementation through the developmental life cycle of design.

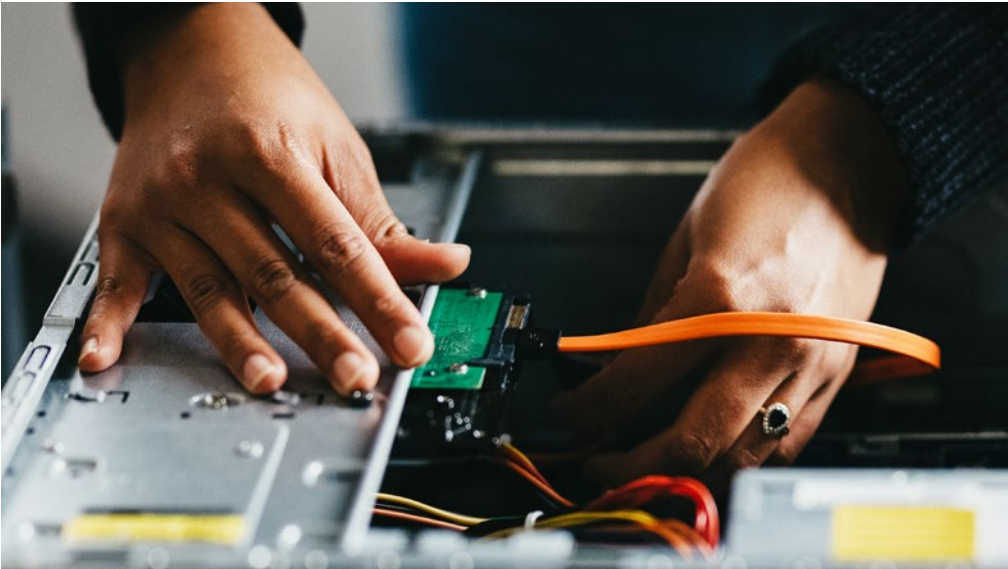


# Certificate in Information Technology Essentials



NZQA Level 4  
Credits 60  
Duration 18 weeks  
Start month February + July  
Location Auckland Manukau + Christchurch  
Delivery On campus

**Further study options**  
Level 5 Certificate in Information Technology  
Level 5 Diploma in IT Technical Support  
Level 5 Diploma in Web Development + Design  
Level 6 Diploma in Software Development  
Level 7 Bachelor of Applied Information Technology



### Programme outline

This programme is a great place to start learning about the IT industry. It has a practical, hands-on focus which will provide you with the transferable skills and knowledge to be employed in a range of entry-level support roles in an organisation. It will enable you to:

- Apply essential knowledge and concepts of computer hardware, operating systems, applications, and networks to provide support for hardware and software resources
- Apply knowledge and concepts of business analysis, database, and user experience to provide a foundation for supporting organisational information systems requirements; and they can contribute to a user interface design using web design concepts and knowledge
- Apply software development knowledge to provide a foundation for developing applications, and apply project management and planning tools to meet the requirements of specified IT briefs.
- Communicate clearly and professionally to maintain relationships and achieve objectives in a range of contexts within the IT industry; including applying appropriate professional, ethical, and legal principles and practices to comply with legal and organisational requirements. This helps provide a foundation for an IT career.

### Admission requirements

#### Applicants must

- Turn 17 within their first year of study at Whitecliffe
- Have gained one of the following qualifications:
  - NZ Certificate in Computing (User fundamentals, Level 2, Ref: 2591)
  - NZ Certificate in Computing (Intermediate, Level 3, Ref: 2591)
  - NZ Certificate in Computing (Advanced user, Level 4, Ref 2593).

OR

- Demonstrate equivalent knowledge, skills, or experience

#### International applicants must

- Turn 18 within their first year of study at Whitecliffe
- Hold a New Zealand or overseas qualification assessed by NZQA to be equivalent to any stated above.
- Have achieved prior to enrolling an IELTS General or Academic score of 5.5 with no band score lower 5, or equivalent ([whitecliffe.ac.nz/english-proficiency-outcome](http://whitecliffe.ac.nz/english-proficiency-outcome))
- Meet New Zealand visa entry requirements [www.whitecliffe.ac.nz/international-students](http://www.whitecliffe.ac.nz/international-students)



# Certificate in Information Technology



NZQA Level	5
Credits	60
Duration	18 weeks
Start month	February + May + July + October
Location	Auckland Central + Wellington + Christchurch
Delivery	On campus + online

### Further study options

Level 5	Diploma in IT Technical Support
Level 5	Diploma in Web Development + Design
Level 6	Diploma in Software Development
Level 7	Bachelor of Applied Information Technology



### Admission requirements

#### Applicants must

- Turn 17 within their first year of study at Whitecliffe
- Have gained 42 credits at NCEA Level 3 including:
  - 14 credits in Digital Technologies or Computing, and
  - 10 credits in Maths, and
  - 10 credits in English at NCEA Level 2 or above.

OR

- Have gained Level 4 Certificate in IT Essentials

OR

- Demonstrate equivalent knowledge, skills, and experience

OR

- Achieve a 60% pass in the Skills and Knowledge Assessment.

#### International applicants must

- Turn 18 within their first year of study at Whitecliffe
- Have achieved prior to enrolling an IELTS Academic overall score of 5.5 with no band less than 5.0 or equivalent ([whitecliffe.ac.nz/english-proficiency-outcome](http://whitecliffe.ac.nz/english-proficiency-outcome))
- Hold a New Zealand or overseas qualification assessed by NZQA to be equivalent to any stated above

OR

- Achieve a minimum of 60% in the Skills and Knowledge Assessment

AND

- Provide a statement of purpose
- Meet New Zealand visa entry requirements [www.whitecliffe.ac.nz/international-students](http://www.whitecliffe.ac.nz/international-students)

### Programme outline

This programme is perfect for those with a keen interest in looking to enter the IT industry or to upskill for future career opportunities. It also provides a solid foundation for IT diploma-level study.

You will gain essential IT and professional skills that are needed in today's IT industry with training in technical support fundamentals, information systems, software development fundamentals, and web concepts.



# Diploma in Information Technology Technical Support



NZQA Level	5
Credits	120
Duration	1 year
Start month	February + May + July + October
Location	Auckland Central + Wellington + Christchurch
Delivery	On campus

**Further study options**  
Level 7 Bachelor of Applied Information Technology

### Programme outline

This programme prepares you to work in a range of entry-level support roles in an organisation, which may include employment in roles such as computer technician, service desk, or technical support. It also provides a pathway to further IT related study.

Graduates will have an awareness of the IT environment, appreciate the needs of users, and be able to provide IT technical support. They will also be able to operate within the applicable professional standards and practice, as part of a team, or independently with a broad level of supervision.

This qualification offers training towards the following globally recognised vendor certifications:

- CompTIA A+ (220-901 / 220-902)
- CompTIA Network+ N10-006

### Admission requirements

*Applicants must*

- Turn 17 within their first year of study at Whitecliffe
- Have achieved 42 credits at NCEA Level 3 (or equivalent) including:
  - 14 credits in Digital Technologies or Computing, and
  - 10 credits in Maths, and
  - 10 credits in English at NCEA Level 2 or above.

*OR one of the following:*

- Achieved 60% pass in the Skills and Knowledge Assessment
- Have gained a Certificate in IT Essentials or Certificate in Information Technology.

*International applicants must*

- Turn 18 within their first year of study at Whitecliffe
- Provide academic and work experience documentation and complete a statement of purpose
- Have achieved prior to enrolling an IELTS Academic overall score of 5.5 with no band less than 5.0 or equivalent ([whitecliffe.ac.nz/english-proficiency-outcome](http://whitecliffe.ac.nz/english-proficiency-outcome))
- Have an NCEA Level 3 certificate in computing or equivalent, OR gain a minimum of 60% in the Skills and Knowledge Assessment
- Meet New Zealand visa entry requirements  
[www.whitecliffe.ac.nz/international-students](http://www.whitecliffe.ac.nz/international-students)



# Diploma in Web Development + Design



NZQA Level	5
Credits	120
Duration	1 year
Start month	February + May + July + October
Location	Auckland Central + Auckland Manukau + Wellington + Christchurch
Delivery	On campus + online

### Further study options

Level 6	Diploma in Software Development
Level 7	Bachelor of Applied Information Technology



### Admission requirements

#### Applicants must

- Turn 17 within their first year of study at Whitecliffe
- Achieve 42 credits at NCEA Level 3 (or equivalent) including:
  - 14 credits in Digital Technologies or Computing, and
  - 10 credits in Maths, and
  - 10 credits in English at NCEA Level 2 or above.

#### OR one of the following:

- Have a Certificate in IT Essentials, or Certificate in Information Technology or Diploma in Information Technology Technical Support
- Achieve a minimum of 60% in the Skills and Knowledge Assessment.

#### International applicants must

- Turn 18 within their first year of study at Whitecliffe
- Provide academic and work experience documentation
- Have achieved prior to enrolling an IELTS Academic overall score of 5.5 with no band less than 5.0 or equivalent ([whitecliffe.ac.nz/english-proficiency-outcome](http://whitecliffe.ac.nz/english-proficiency-outcome))
- Provide a statement of purpose
- Achieved NCEA Level 3 certificate in computing or equivalent, OR achieve a minimum of 60% in the Skills and Knowledge Assessment
- Meet New Zealand visa entry requirements  
[www.whitecliffe.ac.nz/international-students](http://www.whitecliffe.ac.nz/international-students)

### Programme outline

This programme is designed for those looking to gain an entry-level role as a web developer. You'll also gain practical IT and professional skills needed to succeed in your IT career.

On completion of this programme, graduates will be able to customise front-end web solutions or proceed to further IT related studies. They will also be capable of operating within applicable professional standards and practice, both independently and collaboratively as part of a team.



# Diploma in Software Development



NZQA Level	6
Credits	240
Duration	2 years
Start month	February + May + July + October
Location	Auckland Central + Wellington + Christchurch
Delivery	On campus

**Further study options**  
Level 7 Bachelor of Applied Information Technology



**Programme outline**  
This programme is designed for people seeking to focus on one or more application domains such as application development, web development, games development, and mobile application development.  
The programme provides students with the opportunity to achieve a qualification in software development that meets industry standards for appropriately qualified information technology employees.  
Upon completion, you will be able to enter employment in development or testing roles, in a range of organisational contexts.

- Admission requirements**
- Applicants must
- Turn 17 within their first year of study at Whitecliffe
  - Achieve 42 credits at NCEA Level 3 including:
    - 14 credits in Digital Technologies or Computing, and
    - 10 credits in Maths, and
    - 10 credits in English at NCEA Level 2 or above.
- OR one of the following:
- Achieve a minimum of 50% in the online assessment
  - Have a Certificate in IT Essentials
  - Have a Certificate in Information Technology
  - Have a Diploma in IT Technical Support
  - Have a Diploma in Web Development and Design

- International applicants must**
- Turn 18 within their first year of study at Whitecliffe
  - Provide academic and work experience documentation
  - Have achieved prior to enrolling an IELTS Academic overall score of 6.0 with no band less than 5.5 or equivalent ([whitecliffe.ac.nz/english-proficiency-outcome](http://whitecliffe.ac.nz/english-proficiency-outcome))
  - Submit a Statement of purpose
  - Have a Diploma in Web Development and Design or equivalent
  - Meet New Zealand visa entry requirements [www.whitecliffe.ac.nz/international-students](http://www.whitecliffe.ac.nz/international-students)



# Bachelor of Applied Information Technology



NZQA Level	7
Credits	360
Duration	3 years
Start month	February + July
Location	Auckland Central + Wellington + Christchurch
Delivery	On campus

### Further study options

- Level 8 Postgraduate Diploma in Information Technology
- Level 9 Master of Information Technology with specialisations in Data Science and Cyber Security



### Programme outline

This degree programme aims to prepare industry-ready graduates who are specialists in their chosen field of Network Engineering and Security or Software and Web Development. Graduates will develop a systemic and coherent understanding of Information Technology.

The degree is accredited by IT Professionals New Zealand and is a part of the Seoul Accord, so graduates will have an internationally recognised qualification.

The degree consisting of two specialisations: Network Engineering and Security, and Software and Web Development. Graduates of the Bachelor of Applied Information Technology programme will develop a systemic and coherent understanding of Information Technology. In their chosen specialisation of Network Engineering and Security or Software and Web Development, they will develop knowledge and understanding that they can apply in the workplace and will prepare them for IT professional body membership and certification.

This qualification offers training towards the following globally recognised vendor qualifications:

- CompTIA IT Fundamentals
- CompTIA A+
- CompTIA Security+
- Cisco Certified Entry Networking Technician (CCENT)
- CCNA Wireless
- Cisco CCNA Routing and Switching
- Implementing Cisco Collaboration Devices (CICD)
- Cisco CCNP Switching and Routing
- Cisco 210-260 IINS Certification
- CCNA Security

### Admission requirements

Applicants must

- Turn 17 within their first year of study at Whitecliffe
- Have achieved NCEA Level 3 or above and 20 credits at NCEA Level 2 or above, including:
  - 14 credits each in three approved subjects, and
  - UE Literacy (NCEA Level 2 or above; 10 credits with 5 credits each in reading and writing), and
  - UE Numeracy (NCEA Level 1 or above; 10 credits)

OR

- A relevant qualification at Level 3 on the NZQF or above and the equivalent of UE Literacy and Numeracy

OR

- New Zealand Certificate in Information Technology Essentials (Level 4).

International applicants must

- Turn 18 within their first year of study at Whitecliffe
- Have achieved prior to enrolling an IELTS Academic overall score of 6.0 with no band less than 5.5 or equivalent ([whitecliffe.ac.nz/english-proficiency-outcome](http://whitecliffe.ac.nz/english-proficiency-outcome))
- Have achieved a Certificate in IT Essentials or equivalent
- Meet New Zealand visa entry requirements [www.whitecliffe.ac.nz/international-students](http://www.whitecliffe.ac.nz/international-students)



# Postgraduate Diploma in Information Technology



NZQA Level 8  
Credits 120  
Duration 8 months  
Start month July + November 2024, March 2025  
Location Auckland Central + Wellington + Christchurch  
Delivery Distance with some in-person seminars

**Further study options**  
Level 9 Master of Information Technology with specialisations in Data Science and Cyber Security

**Programme outline**  
The PGDipIT is designed for new bachelor's graduates, or those working in the industry seeking an advanced qualification aligned with industry needs. It prepares graduates for senior technology roles with capability for more rapid career and technological advancement than would otherwise be the case. The programme will provide graduates with the knowledge and experience in their chosen field of study: Cyber Security, Ubiquitous Computing, Data Analysis, or Machine Learning.  
Graduates will build on existing knowledge, develop research capability, and create innovative solutions in a chosen topic or area of interest. This qualification provides a pathway for graduates and students wishing to engage in higher level studies or progress their career in the IT industry.  
Some specialist courses are 85%- 90% aligned with IT Industry Certifications, Available Industry certifications are Ethical Hacking, Network Defender, Digital Forensics and Chief Information Security Officer. Students have an opportunity to achieve industry certifications while completing PGDipIT.

**Admission requirements**  
*Applicants must*  
• Have a recognised Bachelor degree in Information Technology or a related discipline with a B- or higher average  
OR  
• Have a Bachelor degree (Honours) in Information Technology or a related discipline  
OR  
• A Graduate Certificate or Graduate Diploma in Information Technology or related field.

*International applicants must*  
• Turn 18 within their first year of study at Whitecliffe  
• Have achieved prior to enrolling an IELTS Academic overall score of 6.5 with no band less than 6.0 or equivalent ([whitecliffe.ac.nz/english-proficiency-outcome](http://whitecliffe.ac.nz/english-proficiency-outcome))  
• Provide a Statement of Purpose  
• Meet New Zealand visa entry requirements  
[www.whitecliffe.ac.nz/international-students](http://www.whitecliffe.ac.nz/international-students)



# Master of Information Technology

With specialisations in Data Science and Cyber Security



NZQA Level	9
Credits	180
Duration	1 year
Start month	July + November 2024, March 2025
Location	Auckland Central + Wellington + Christchurch
Delivery	Distance with some in-person seminars

**Further study options**  
Level 10 Doctoral studies



## Programme outline

The Master of Information Technology (MIT) is a 180-credit postgraduate programme taken over three trimesters. It builds on three-year bachelor's degrees in the same academic field. Two specialisations are offered - Data Science and Cyber Security. This is a taught masters followed by a significant project integrating within a practical or research context.

Some specialist courses are 85%- 90% aligned with IT Industry Certifications, Available Industry certifications are Ethical Hacking, Network Defender, Digital Forensics and Chief Information Security Officer. Students have an opportunity to achieve industry certifications while completing MIT.

The Master of Information Technology (MIT) degree positions graduates for specialist and leadership roles.

## Admission requirements

*Domestic applicants must*

- Have a recognised Bachelor degree in Information Technology or a related discipline with a B- or higher average

OR

- Have a Bachelor degree (Honours) in Information Technology or a related discipline

OR

- A Graduate Certificate or Graduate Diploma in Information Technology or related field

AND

- Attend an interview in person or online.

*International applicants must*

- Turn 18 within their first year of study at Whitecliffe
- Have achieved prior to enrolling an IELTS Academic overall score of 6.5 with no band less than 6.0 or equivalent
- Provide a Statement of Purpose
- Hold a New Zealand qualification or equivalent to any stated above
- Meet New Zealand visa entry requirements  
[www.whitecliffe.ac.nz/international-students](http://www.whitecliffe.ac.nz/international-students)



# School of Creative Arts Therapies

A person wearing a red sweater and a blue and white striped shirt is drawing a colorful wavy line on a large sheet of paper. The line is composed of multiple overlapping colors: orange, pink, yellow, and blue. The person's hand is visible, holding a marker or brush. The background is dark and out of focus, showing some furniture and a table with various items on it.

Creative Arts Therapy is a form of psychotherapy that utilises creative modalities - including visual arts-making, drama, dance/movement, creative writing, and nature-connected arts - to improve and inform physical, mental, emotional, and spiritual well-being. Whitecliffe College is the only school in Aotearoa New Zealand to offer the suite of Creative Arts Therapies programmes.



# Programme structures

Four core Components combine to achieve the aims and graduate outcomes of the PGDip CAT and MA CAT (Clinical) programmes. A Creative Arts Practice Component; a Research Capacities Component; a Therapy Capacities Component; and a Situated Practice Component. These accord with the A|R|T|S scaffolding used to structure the programmes, courses and that are given to students to help them navigate their mastery of the rhizomatic and emergent profession of Creative Arts Therapy.

Postgraduate Diploma in Creative Arts Therapy	Master of Arts in Creative Arts Therapy (Clinical)	
YEAR 1	YEAR 2	YEAR 3
<p>Over the duration of the year, students attend 21 days of in-person seminar sessions held on weekends, once a month from February to November. Between these seminars, students attend smaller online regional group tutorials and engage in collaborative and solo learning activities.</p> <p><b>SEMESTER 1</b></p> <p>During semester 1, over 11 seminar days and several online sessions, students engage with two courses focused on Creative Arts Practice and Therapy Capacities.</p> <p><b>SEMESTER 2</b></p> <p>During semester 2, over 10 seminar days and several online sessions, students engage with two course focused on Research Capacities and Situated Practice.</p>	<p>Over the duration of the year, students attend 21 days of in-person seminar sessions divided into five blocks, beginning in January and ending in November. Between these seminars, students attend smaller online regional group tutorials and engage in collaborative and solo learning activities. In Year 2 of the MA CAT, courses run in parallel aside from the Situated Practice course beginning mid-year, during which students engage with clients in supervised Placements.</p> <p><b>SEMESTER 1</b></p> <p>Students engage simultaneously with courses focusing on Creative Arts Practice, Research Capacities and Therapy Capacities. This happens over three seminar blocks, plus online tutorials, with the third seminar introducing the Situated Practice Placement component.</p> <p><b>SEMESTER 2</b></p> <p>Students engage simultaneously with courses focusing on Creative Arts Practice, Research Capacities, Therapy Capacities and Situated Practice. These are explored in two seminar blocks, online tutorials and implemented via engagement in a Placement.</p>	<p>Over the duration of the year, students attend 21 days of in-person seminar sessions divided into five blocks, beginning in January and ending in November. Between these seminars, students attend smaller online regional group tutorials and engage in collaborative and solo learning activities. In Year 3 of the MA CAT, courses run in parallel aside from the Research Capacities course which ends in September, when students submit their dissertations and present their research.</p> <p><b>SEMESTER 1</b></p> <p>Students engage simultaneously with courses focusing on Creative Arts Practice, Research Capacities, Therapy Capacities and Situated Practice. This happens over two seminar blocks, plus online tutorials, and implemented via development of a research dissertation project and engagement in a Placement.</p> <p><b>SEMESTER 2</b></p> <p>Students engage simultaneously with courses focusing on Creative Arts Practice, Research Capacities, Therapy Capacities and Situated Practice. This happens over three seminar blocks, plus online tutorials, and implemented via submission and presentation of a research dissertation project, engagement in a Placement and participation in a CAT Exhibition.</p>
Level 8, 120 credits	120 credits	120 credits

Note: Schedule may be subject to change

Level 9, MA CAT 240 credits

# Pathways

Whitecliffe College is the only school in New Zealand to offer a full suite of Creative Arts Therapies programmes that are recognised for professional registration with the Australia, New Zealand and Asia Creative Arts Therapy Association ANZACATA.

Creative Arts Therapy is a form of psychotherapy in which creative modalities - including visual arts-making, drama, dance/movement, creative writing, and nature-connected arts – are used collaboratively by therapist and client/s to explore, inform and enhance physical, mental, emotional, spiritual and social well-being.

You will combine your passion for creativity, collaboration, and supporting others in order to enhance wellbeing. You will develop the confidence to contribute to this dynamic, emerging field, harnessing your own experience and interests to pioneer new frontiers in this rapidly expanding profession.

We offer a one year Postgraduate Diploma and a two year Clinical Master's degree.



## Career opportunities

- Community mental health settings
- School counselling
- Prison rehabilitation
- Disability services
- Special schools
- Private practice
- Drug and alcohol services
- Trauma services (including ACC)



# Alumni spotlight

## Deborah French

MAAT(Clinical), CATHr, PGDipTchg



Originally a teacher and artist, the MAAT opened a new career to me. After graduating, I worked in high school guidance, then with the dying and their whanau through Hospice. I'm now in fulltime private practise, working with clients from five though to older adults focusing on suicidality, grief and sexual assault.

## Rata Gordon

MAAT(Clinical), CATHr



I'm a writer, CAT, and creative mentor. I provide courses and workshops in poetry and creative practice (in-person and online). I offer one-on-one CAT, research supervision, freelance writing, and mentorship for artists, writers, musicians, dancers and other creatives.

## Dr Ying(Ingrid) Wang

PhD(Dean's list), MAAT(Clinical), CATHr, MDes



I'm a Research Fellow at the University of Auckland, conducting research and supervising studies in arts-based research, CAT, identity study, and the power of arts for education, well-being, and social transformation. I'm dedicated to integrating culturally diverse perspectives into clinical work and academic research.

## Anita Vlasic

MAAT(Clinical), CATHr, BASW



I've been in private practice in South Auckland for five years as a CAT. I'm contracted to ACC Sensitive Claims, get referrals from other agencies, supervise Whitecliffe College students and ACC Therapists. I resonate with and incorporate Indigenous wellbeing models in my practice.

## Istvan Csata

MAAT(Clinical), CATHr



I'm employed in a school programme supporting children and young adults on the autism spectrum. I offer a multi-modal CAT approach the drama as the dominant thread. My work is infused by Buddhist awareness and mindful practices.



# Postgraduate Diploma in Creative Arts Therapy



NZQA Level 8  
Credits 120  
Duration 1 year  
Start month February  
Location Auckland Manukau + Christchurch  
Delivery Distance with 10 in-person seminars

**Further study options**  
Level 9 Master of Arts in Creative Arts Therapy (Clinical)

Left Winifred Whyte  
Right Amelia-Jayne Yaikmis,  
Heleina Dalton



**Programme outline**  
The Postgraduate Diploma in Creative Arts Therapy (PGDip CAT) is a one-year full-time programme that offers an introduction to the foundational philosophy, theories, and practices relating to the Creative Arts Therapies. The Diploma is offered in two locations, Manukau and Christchurch, and involves ten in-person seminar weekends—one per month from February to November—in each location, with distance study in between.  
*The PGDip CAT includes courses focused on:*

- Creative Arts Practice – exploring the integral role of creativity and arts-making
- Research Capacities – exploring research within social contexts
- Therapy Capacities – exploring core theories relevant to CAT
- Situated Practice – engaging in developing and implementing a group session

**Admission requirements**  
*Applicants must*

- Hold an undergraduate diploma or degree qualification in a relevant field, equivalent to NZQF Level 7

OR

- Present a level of experience in a relevant field that would enable the applicant to demonstrate competencies equivalent to holding an undergraduate qualification, plus the ability to study at level 8
- Provide evidence of academic writing ability which reflects the potential for successful study at the graduate level (examples of previous academic writing may be submitted).

*In addition to the above, all applicants must*

- Submit a Letter of Intent
- Provide three letters of reference and a current curriculum vitae
- Attend a solo and a group interview – by invitation, based on application information.

*International applicants must*

- Submit a 5-minute self-introduction video explaining the motivation for choosing to study with us.
- Have achieved prior to enrolling an IELTS academic score of 6.5 with no band score lower than 6.0 or equivalent ([whitecliffe.ac.nz/english-proficiency-outcome](http://whitecliffe.ac.nz/english-proficiency-outcome))
- Hold a New Zealand qualification or equivalent to any stated above
- Meet New Zealand visa entry requirements [www.whitecliffe.ac.nz/international-students](http://www.whitecliffe.ac.nz/international-students)



# Master of Arts in Creative Arts Therapy (Clinical)



NZQA Level	9
Credits	240
Duration	2 years
Start month	January
Location	Auckland Manukau + Christchurch
Delivery	Distance with some in-person seminars + placements

**Further study options**  
Level 10 Doctoral studies



Left Daniela Gonzalez-Bea  
Right Collaborative nature-based creation

### Programme outline

Intensive weekend and four-to-five day seminars are held between four and six times annually to enable students to:

- Engage in theoretical and experiential learning with faculty, peers, and local and international practitioners
- Participate in group processes and self-reflexive practices
- Build clinical, research, creative and presentation skills

The MA CAT includes courses focused on:

- Creative Arts Practice – exploring the integral role of creativity and arts-making
- Research Capacities – exploring and implementing CAT appropriate research
- Therapy Capacities – exploring both theory and professional practice of CAT
- Situated Practice – engaging with clients in supervised Placements

In order to successfully complete the MA CAT and be eligible for professional registration with the regional professional body, the Australian, New Zealand, and Asian Creative Arts Therapy Association (ANZACATA), students complete an independent research project supported by a research supervisor and 750 hours of supervised clinical practice.

The clinical practice is achieved in the final 18-month period of study via placements that involve work with real-world clients and populations. Students are encouraged to seek out a variety of placement opportunities, assisted by faculty. The research is undertaken during the final year of study. External Creative Arts Therapy clinical and research supervision is funded by Whitecliffe College.

### Admission requirements

Applicants must

- Successfully complete or hold the equivalent of the Level 8 PG Dip CAT

OR

- Present a level of experience and/or training in creative arts therapies / expressive arts therapies that enables the applicant to demonstrate competencies equivalent to holding the Whitecliffe College PGDip CAT, plus the ability to a study at level 9, AND
- Provide evidence of academic writing ability which reflects the potential for successful study at the graduate level (examples of previous academic writing may be submitted).

In addition to the above, all applicants must

- Submit a Letter of Intent
- Provide three letters of reference and a current curriculum vitae
- Attend an interview by invitation, based on application information.

International applicants must

- Have achieved prior to enrolling an IELTS Academic overall score of 6.5 with no band less than 6.0 or equivalent ([whitecliffe.ac.nz/english-proficiency-outcome](http://whitecliffe.ac.nz/english-proficiency-outcome))
- Hold a New Zealand qualification or equivalent to any stated above
- Meet New Zealand visa entry requirements [www.whitecliffe.ac.nz/international-students](http://www.whitecliffe.ac.nz/international-students)



# How to apply



- Decide on the right programme for you
- Complete the online application
- Attach certified copies of required documents
- Complete all enrolment requirements (e.g. interview, portfolio)
- Receive an enrolment contract. Pay your fees
- Receive Letter of Acceptance. Well done - you are in!

1

2

3

4

5

6

## Steps in the process

- 1 Decide on the right programme for you
  - Decide which study path you want to follow, and which programme best suits your needs.
- 2 Complete the online application
  - Complete the Whitecliffe College student application form online [www.whitecliffe.ac.nz/apply-online](http://www.whitecliffe.ac.nz/apply-online)
- 3 Attach certified copies of required documents
  - Attach certified copies of all documents which are relevant to your application - this includes previous tertiary/secondary school academic transcripts, passport/birth certificate copies, and English Language proficiency evidence (IELTS or equivalent, International Students).
- 4 Complete all enrolment requirements
  - Complete any programme specific additional requirements, such as interview, portfolio or further supporting documents. Please refer to the specific programme entry requirements.
  - Submit your application online or via email:

Domestic students: [admissions@whitecliffe.ac.nz](mailto:admissions@whitecliffe.ac.nz)  
International students: [international@whitecliffe.ac.nz](mailto:international@whitecliffe.ac.nz)

- 5 Receive an enrolment contract. Pay your fees
  - If your application is successful, you will receive your enrolment, and other forms related to your admission at Whitecliffe College.
- The enrolment contract must also be signed and returned to Whitecliffe College prior to students arriving to orientation.
- Pay your student fees:

Domestic students  
This can be organised through Studylink, or Electronic Funds Transfer (EFT)

International students  
Fees are to be paid in New Zealand Dollars by Electronic Funds Transfer (EFT). Whitecliffe College will forward you a Fee Protect Student Acknowledgment Form which indicates the fees amount and public trust bank account details.

Students in Mainland China and India must apply for their Student Visa and gain approval in principle before transferring fees. Once we have received your fees, we will send you a formal "Letter of Acceptance" which acknowledges the payment and includes information about orientation and course commencement arrangements.

- 6 Receive Letter of Acceptance. Congratulations, you are in!
  - If you meet the criteria for entry into the programme you will receive your formal Letter of Acceptance to study at Whitecliffe College.
- International students  
Present your acceptance letter when you apply for your Student Visa. A minimum of four weeks should be allowed before the start of the course for the issue of a Student Visa.

## Admission categories

**General Admission**  
All domestic applicants must be at least 16 years old on enrolment and turn 17 within their first year of study at Whitecliffe College. Those not meeting this criterion must gain approval from the Chief Academic Officer. Applicants must also meet the specific programme admission requirements.

**Special Admission**  
Special admission may be offered for applicants who do not meet the admission criteria and are at least 20 years of age and can provide evidence of the skills, educational or work experience equivalent to that expected within the Programme's general admission requirements.

**Discretionary Admission**  
Discretionary admission may be offered to applicants who do not meet the admission criteria and are under the age of 20, if they can demonstrate capability for study at the required level. These provisions must be specified in the respective Programme Regulations. Discretionary Admission is not available for postgraduate programmes Level 8 and above.

**Qualification Equivalence**  
Admission may be granted where a New Zealand or overseas qualification is assessed by NZQA to be equivalent to the qualifications stated in the entry requirements.

**Recognition of Prior Learning**  
Admission may take into consideration evidence from employment or other experience of the learner's relevant skills and knowledge assessed as being equivalent to the programme admission requirements.



# Funding your studies



## Loans + allowances

Loans and allowances are available for those who meet the criteria. For more information go to [www.studylink.govt.nz](http://www.studylink.govt.nz)

## Scholarships

Scholarships are often available and interested students should enquire with the admissions team prior to or during enrolment. For more information go to [www.whitecliffe.ac.nz/scholarships](http://www.whitecliffe.ac.nz/scholarships)

## Fees free study support

If this is your first time studying at tertiary level, you might be eligible for fees-free study support, administered by the Tertiary Education Commission. Please note, the NZ government fees free scheme is being reviewed for 2025. To check if you are eligible for the new policy details go to [feesfree.govt.nz](http://feesfree.govt.nz)

# Contact us

## Get advice + guidance

Get in touch with our Admissions team for advice and support for enrolment at Whitecliffe. Our team can help you with any information or questions you may have about Whitecliffe, our programmes, application process, and paying for fees. You can also organise a campus tour to visit the campus and meet our Admissions team in person.

## Visit a campus

Whitecliffe holds Open Days throughout the year at all our campuses. You'll get a chance to visit the campus, meet with our staff and students, participate in interactive sessions, and get a taste of life as a Whitecliffe student. We also hold regular workshop sessions and campus tours throughout the year. To view our current and upcoming events, visit our website: [www.whitecliffe.ac.nz/open-day](http://www.whitecliffe.ac.nz/open-day)

### Engage

- @whitecliffe\_life
- @whitecliffe
- Whitecliffe College
- Whitecliffe College
- @whitecliffe\_life

### Connect

- 0800 800 300
- [www.whitecliffe.ac.nz](http://www.whitecliffe.ac.nz)
- [admissions@whitecliffe.ac.nz](mailto:admissions@whitecliffe.ac.nz)  
[international@whitecliffe.ac.nz](mailto:international@whitecliffe.ac.nz)

A group of students and staff are gathered around a table. A young woman with long blonde hair is looking at a piece of paper. A man in a black shirt is pointing at the paper. Other students and staff are visible in the background.





At Whitecliffe, we encourage students to be brave and think deeply, so they can join the next generation of thinkers, doers, creatives, artists, design innovators, technologists, therapists, and leaders.